

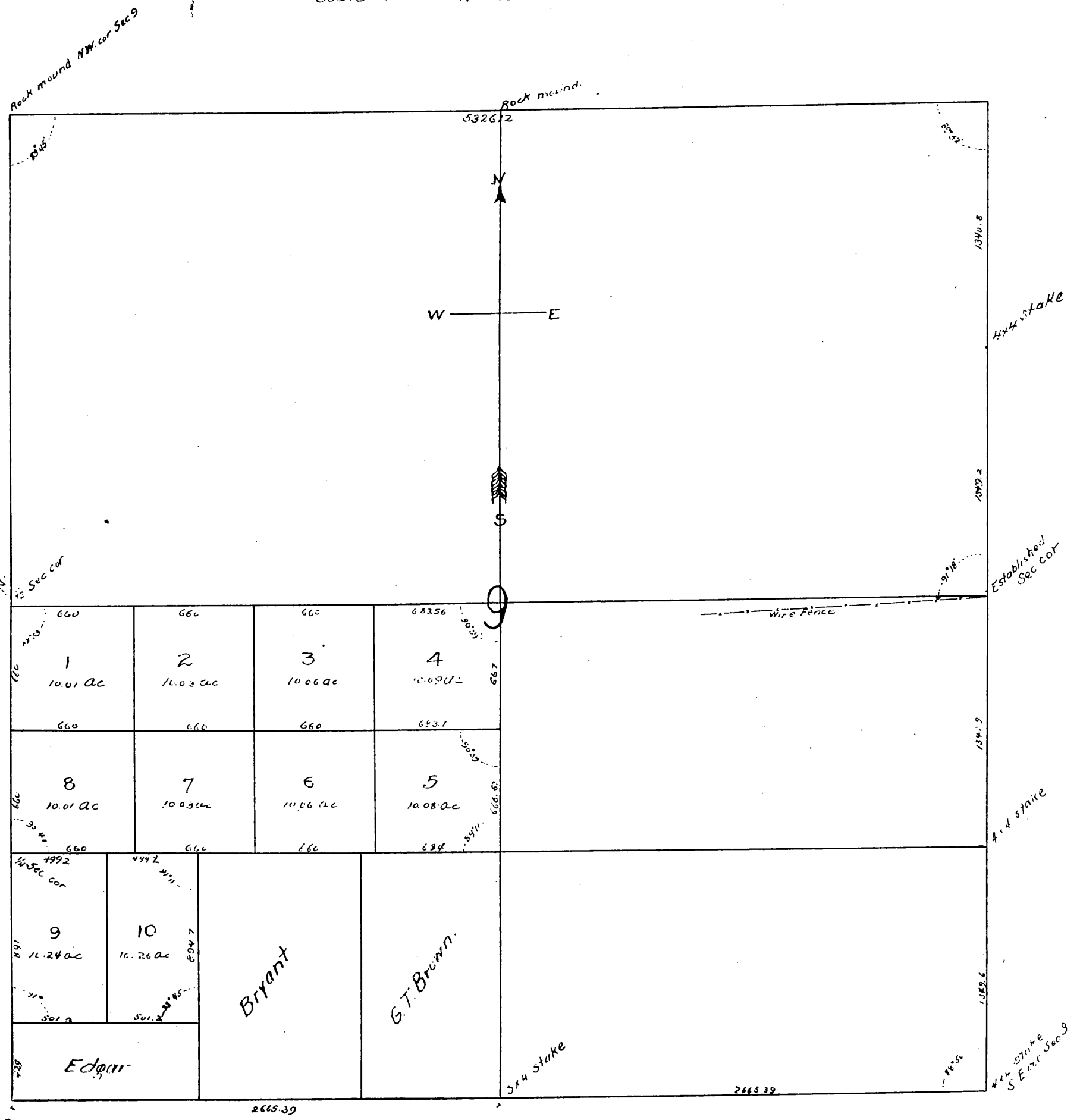
MAP

— OF —

Orange Belt Tract

Being the N $\frac{1}{2}$ of the S.W $\frac{1}{4}$ and 20 $\frac{1}{2}$
ac. being Blocks 9 and 10

Surveyed by W.D. Buckner in June 1889
Scale: 200ft = one inch Var 14°30'E.



A full, true and correct copy of the original
(reduced to the scale of 100 feet to one inch)
recorded July 22, 1889 at 13 min past 3 P.M.
at request of W.H. Heiswelder
John W. Francis, County Recorder
By George B. Blythe, Deputy