



# MAP

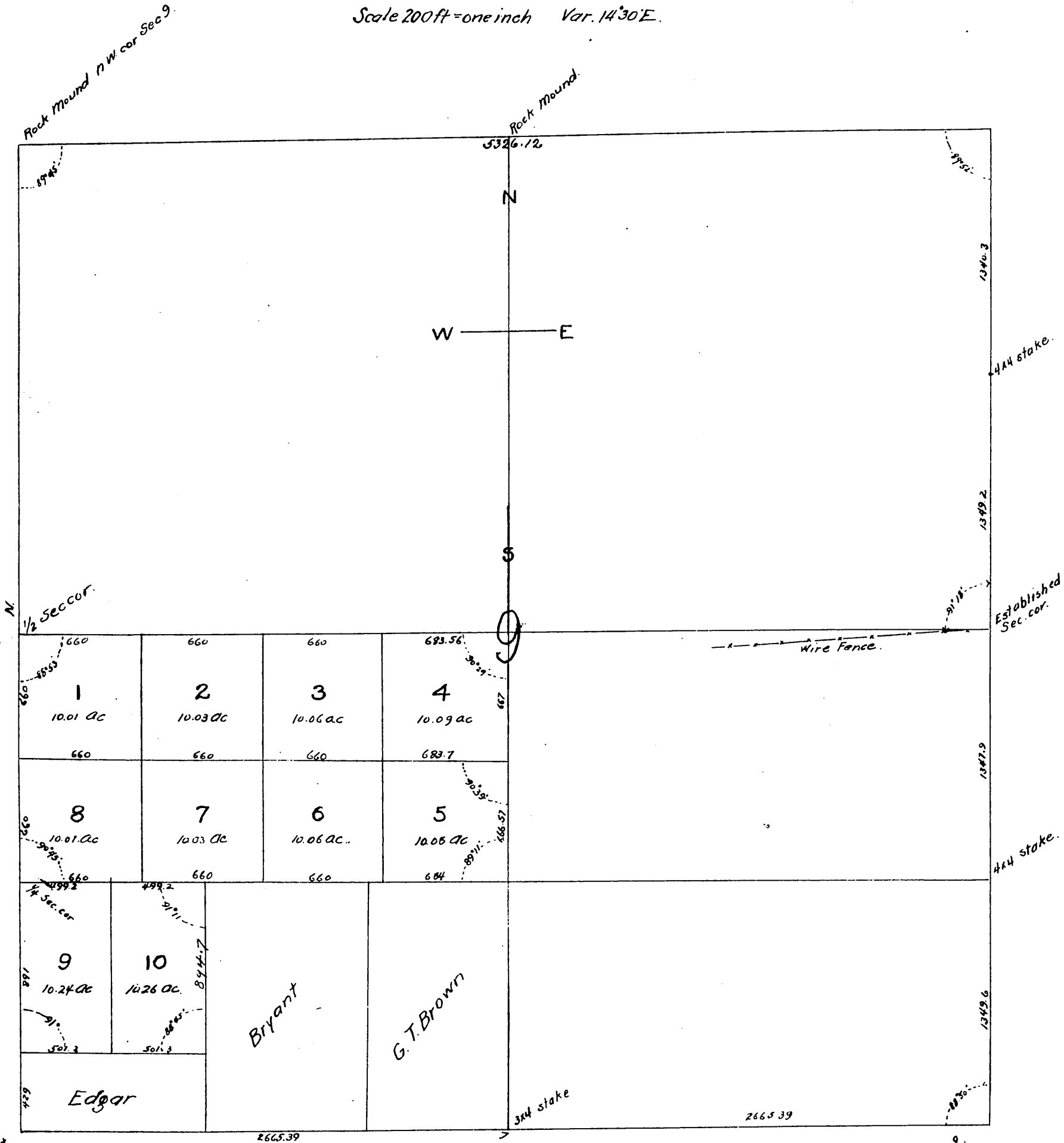
OF

## Orange Belt Tract

Being the N 1/2 of the S.W. 1/4, Sec 9, T.1.S. R.10.W S.B.M.  
and 20 1/2 acres of the S 1/2 of said S.W. 1/4  
Being Blocks 9 and 10

Surveyed by W.D. Buckner in June 1889

Scale 200ft = one inch Var. 14'30"E.



Recorded at request of W. H. Neiswender, Jul 22, 1889.  
at 13 min past 3 P.M. in Book 37, Page 66 of Miscellaneous,  
Los Angeles County Records.  
John W. Francis, County Recorder  
By Jno. Torrey Jr. Deputy.

A full, true and correct copy of the original  
(reduced to the scale of 600 feet to one inch)  
recorded July 23, 1889 at 48 min past 4 P.M.  
at request of W. H. Neiswender  
John W. Francis, County Recorder  
By George Bugbee, Deputy.