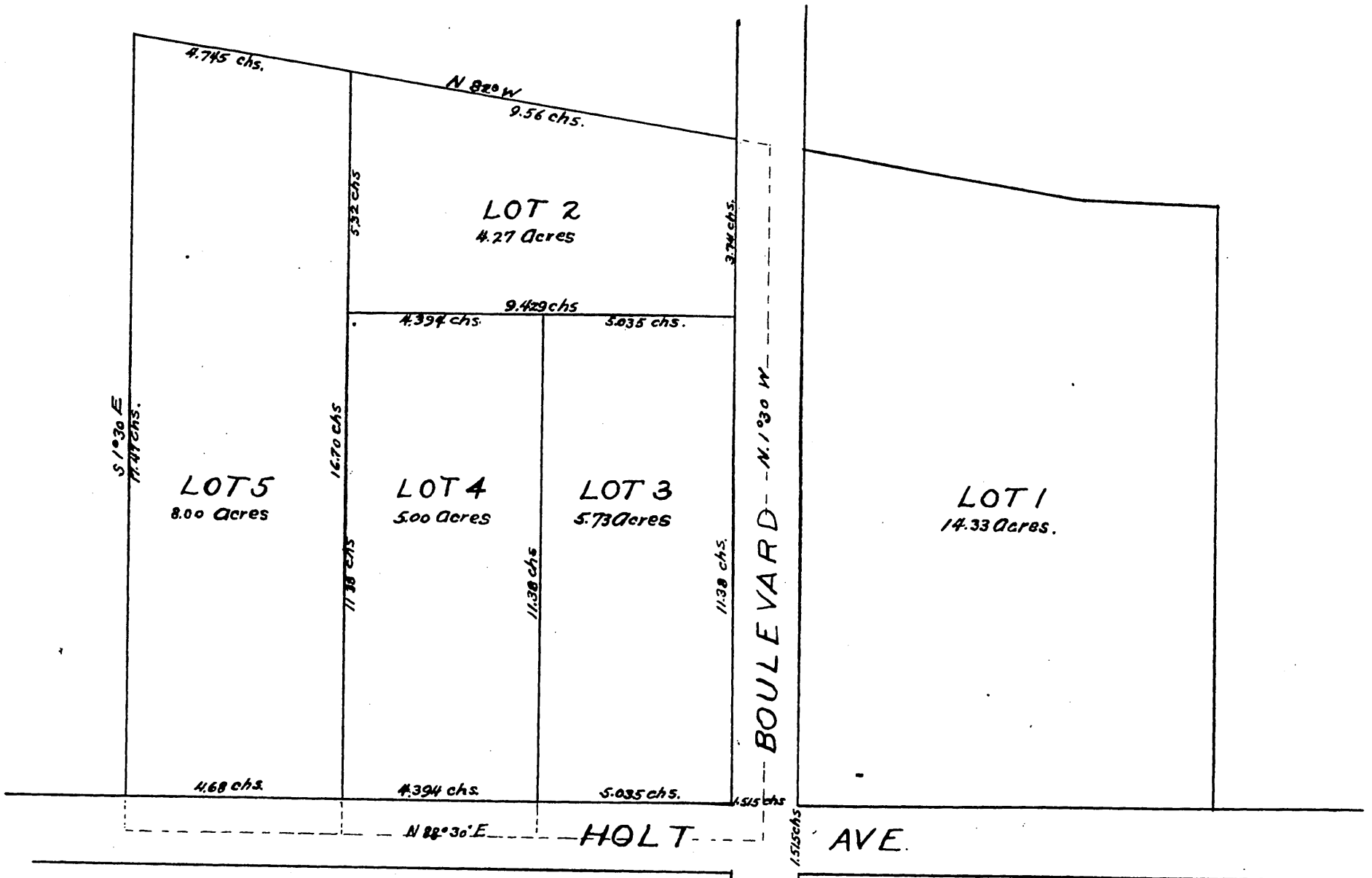




MAP
OF THE
LAUREL TRACT
City of Pomona
Los Angeles Co. Cal.

as drawn by Jas. T. Taylor & Co. Surveyors
August 4th 1889

Scale 2 chs. to 1 inch.



Note, The Laurel Tract embraces Lot 3, Block 182, Pomona Tract containing 14.33 acres, a portion of Block 226 of the Pomona Tract, and a portion of the 100 acre tract lying west of said Block 226 and according to a survey made by James T. Taylor in December 1886 and containing 23 acres, all in the Rancho San Jose, Los Angeles Co. Cal.

All areas and distances to the center of Holt Avenue and Hamilton Boulevard
Aug 4th 1889
Jas T Taylor & Co.

A full, true and correct copy of the original (reduced to the scale of 3 chains to one inch) recorded Aug 23, 1889 at 22 min. past 10 A. M. at request of C. I. Lorbeer.

John W. Francis, County Recorder.
By George Angberg Deputy.

11