

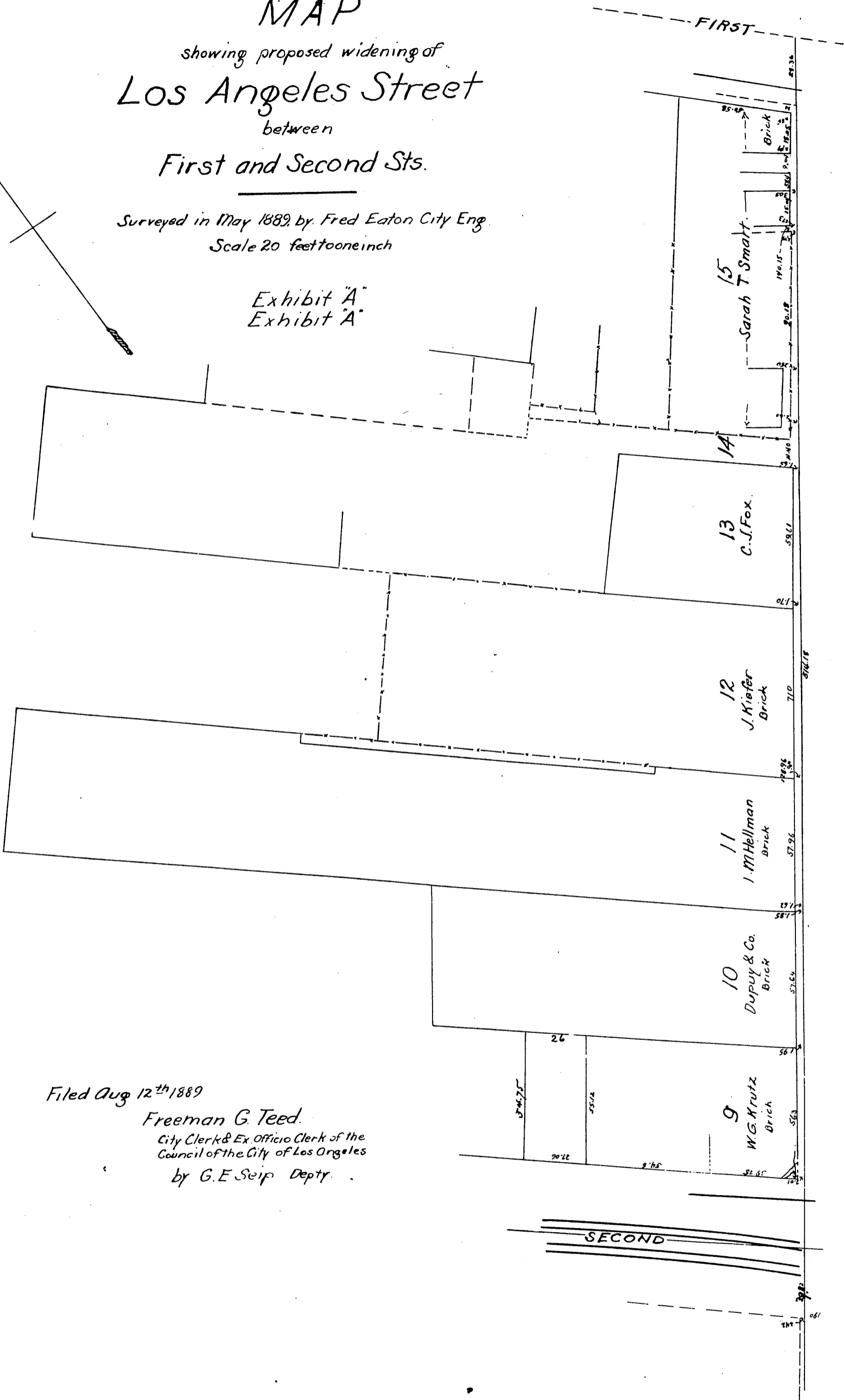


# MAP

showing proposed widening of  
**Los Angeles Street**  
between  
**First and Second Sts.**

Surveyed in May 1889, by Fred Eaton City Eng.  
Scale 20 feet to one inch

Exhibit "A"  
Exhibit "A"



Filed Aug 12<sup>th</sup> 1889

Freeman G. Teed.  
City Clerk & Ex. Officio Clerk of the  
Council of the City of Los Angeles  
by G.E. Seip Deputy.