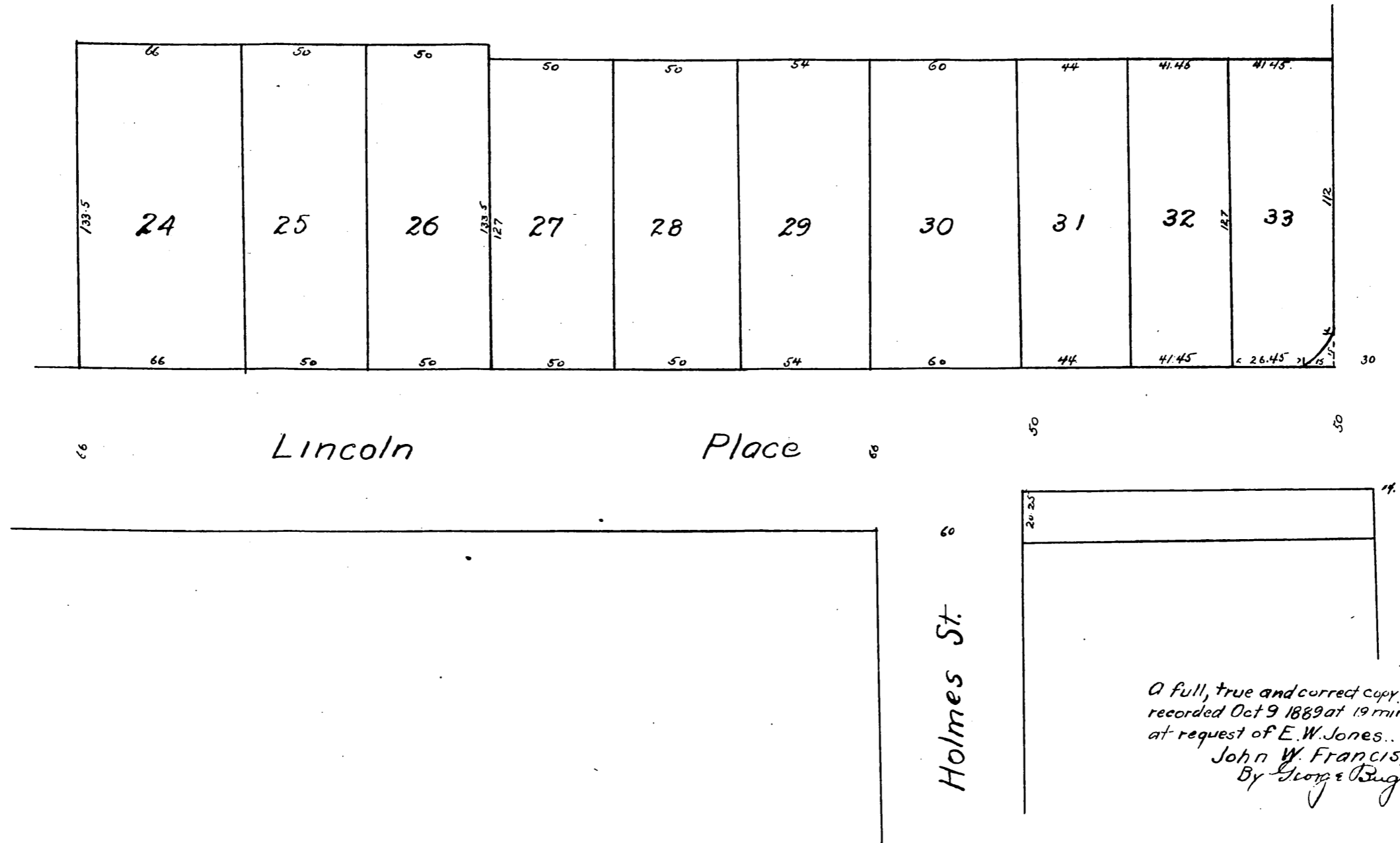


MAP
OF THE
Kennedy Tract Addition
Being a portion of Lot 7, Block 37 Hancock's Survey.
Los Angeles City, California

Surveyed Sept. 1889 by E.G. Jones
Scale 50' = 1 inch.



A full, true and correct copy of the original
recorded Oct 9 1889 at 19 min past 2 P.M.
at request of E.W. Jones.
John W. Francis, County Recorder
By George Bugbee Deputy