

MAP

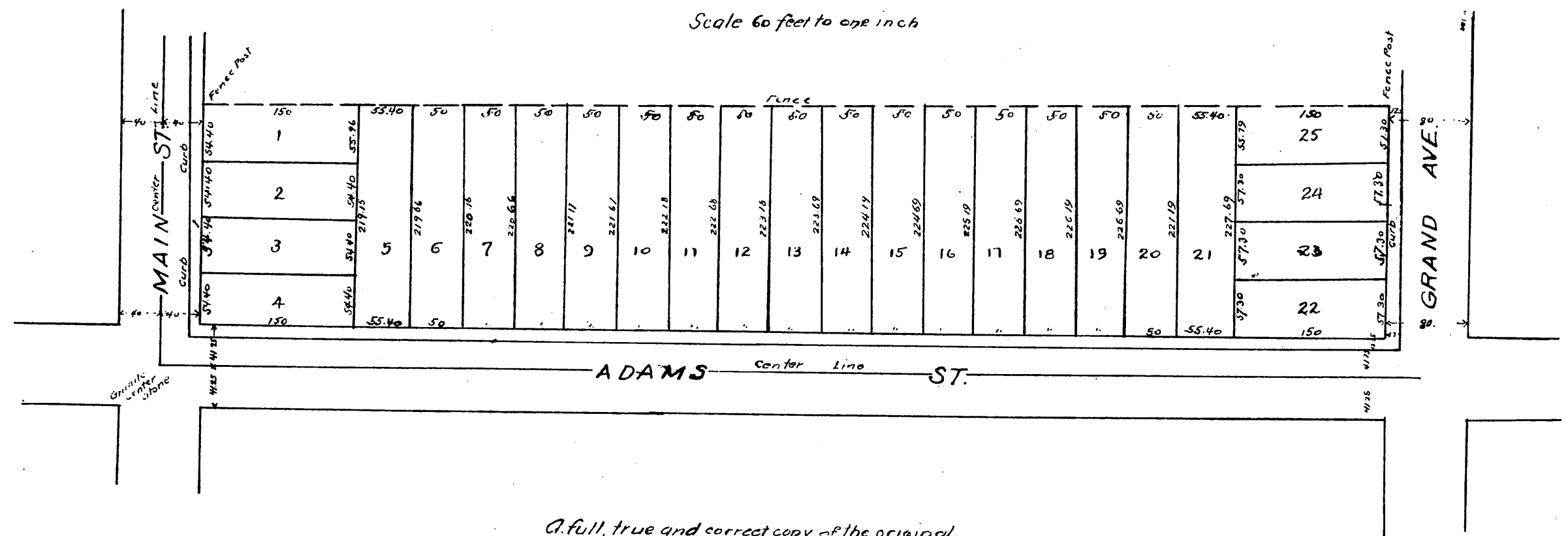
OF THE

V. DOL TRACT

CITY OF LOS ANGELES, CAL.

located in the Northern part of Lot 3 Block 2, Hancock's Survey
Surveyed October 1889
V. J. Rowan, Surveyor.

Scale 60 feet to one inch



*A full, true and correct copy of the original
(reduced to the scale of 120 feet to one inch)
recorded Oct 12, 1889 at 46 min past 8 A.M.
at request of V. Dol.*

John W. Francis, County Recorder.
By Lewis G. Bugbee Deputy.