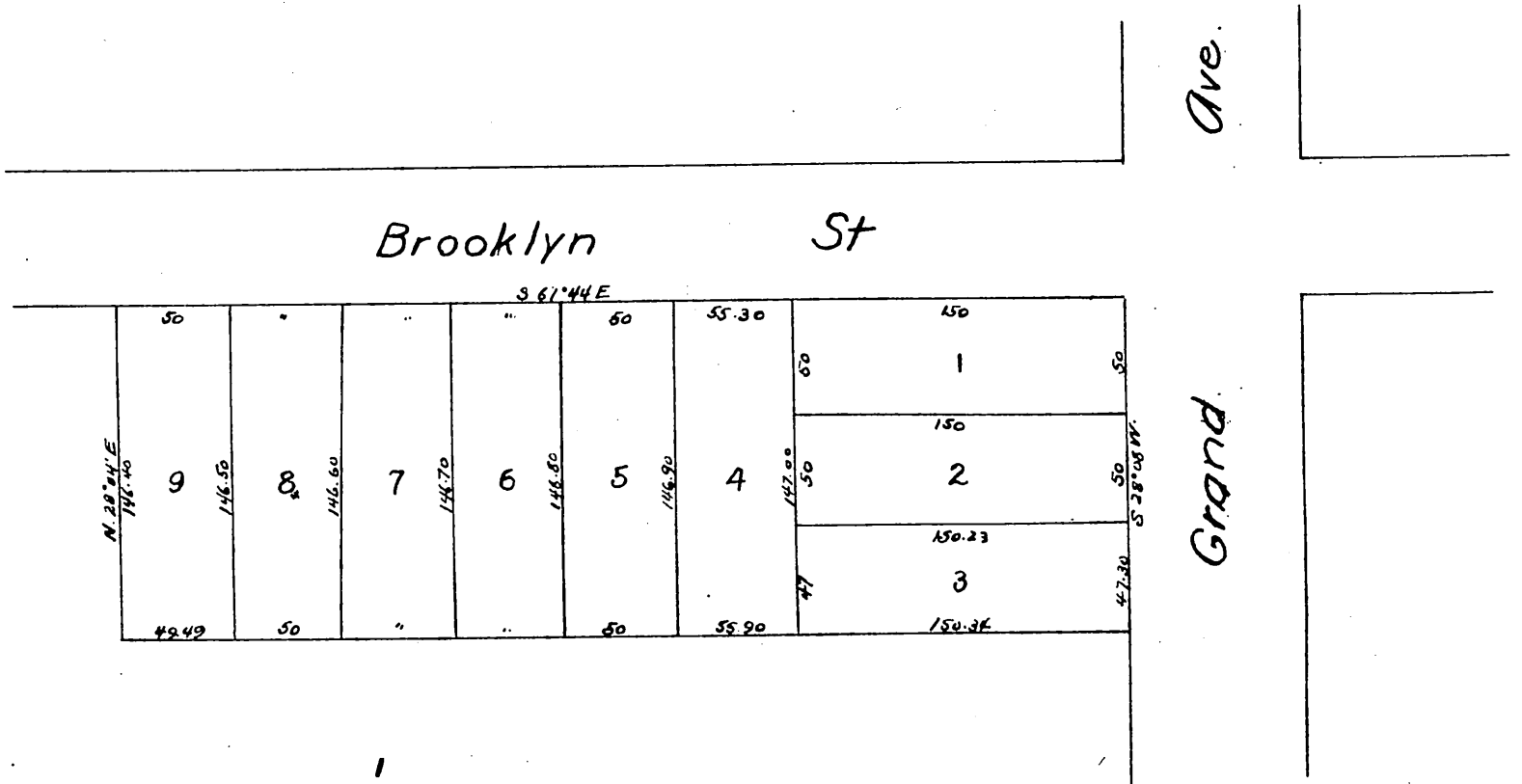


MAP
 OF THE
 Osborne Tract
 Los Angeles, Cal.

Surveyed Nov. 1887 by Pillsbury & Cleveland
 Scale 40 ft to 1 inch



A full, true and correct copy of the original
 (reduced to the scale of 80 feet to one inch)
 recorded Oct. 12, 1889 at 38 min past 9 AM.
 at request of John Osborne
 John W. Francis County Recorder
 By George Hughes Deputy.