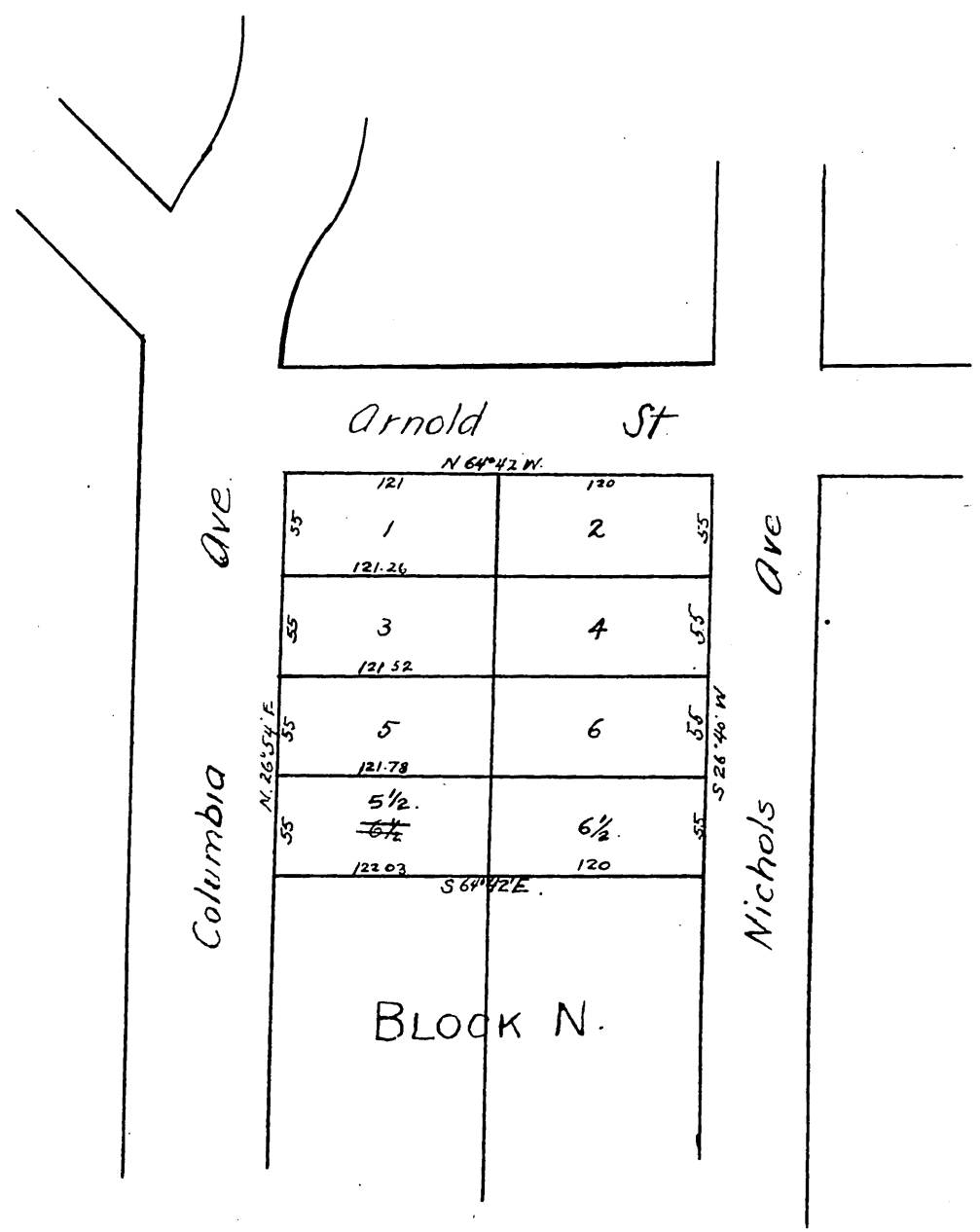




MAP  
OF  
Day, Hinton and Mathes  
Resubdivision of Lots 1, 2, 3, 4, 5, 6 and in-  
cluded alley of Block N. Colina Park.

Surveyed Oct 9, 1889 by Wright & Nicholson  
Scale 100 ft to one inch.



A full, true and correct copy of the original  
recorded October 18, 1889 at 11 min past 9 A.M.  
at request of Abstract & Title Insurance Company.  
John W. Francis, County Recorder  
By George Dugbee, Deputy.