

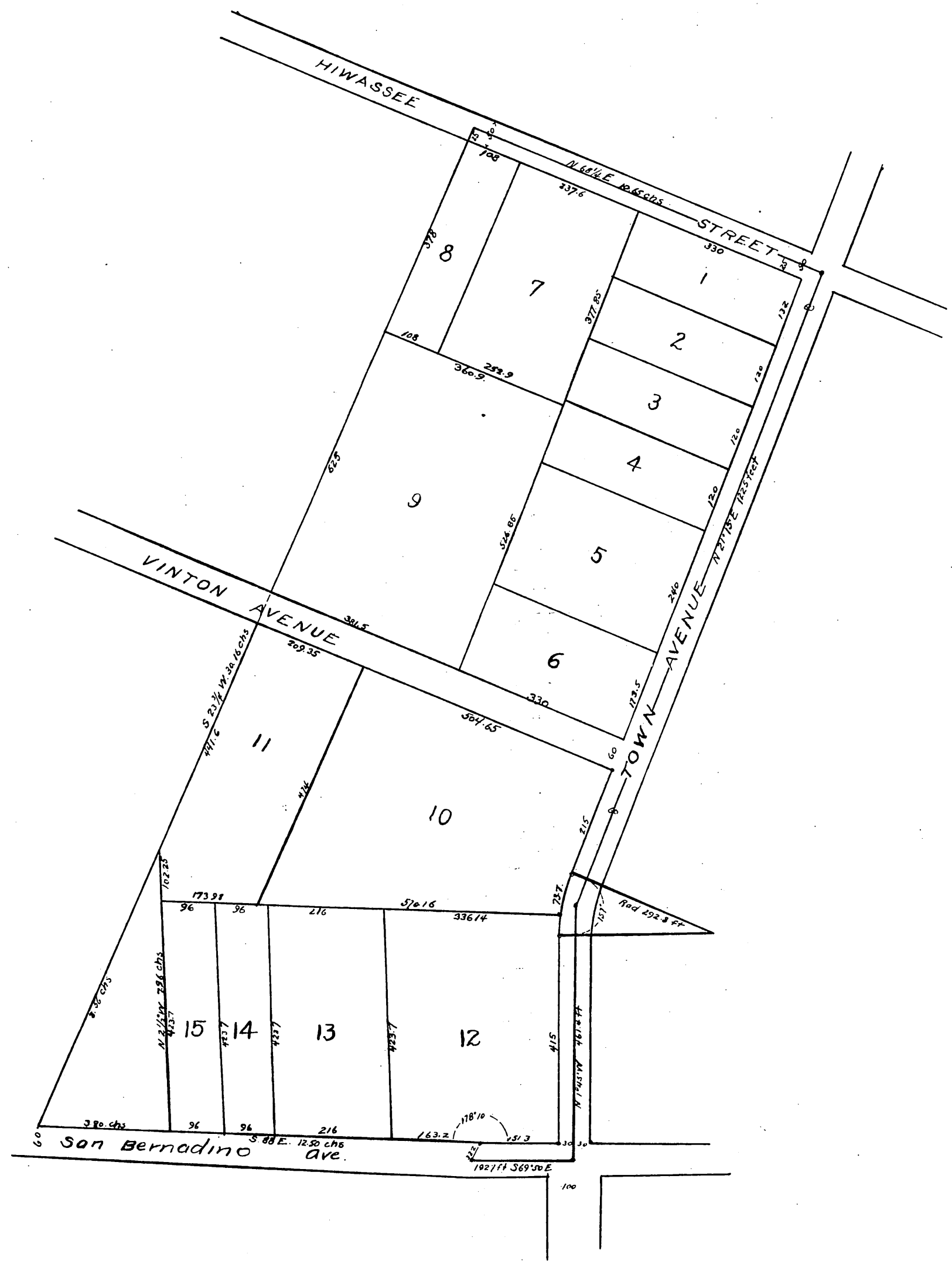


C. C. Johnson's Subdivision

of the Johnson Home Place in Rancho San Jose,
Los Angeles Co. Cal

April 1889 F. H. Reed & Co Surveyors

Scale 1" = 100 ft.



A full, true and correct copy of the original
(reduced to the scale of 200 feet to one inch)
recorded Oct. 18, 1889 at 24 min past 10 A. M.
at request of C. C. Johnson.

John W. Francis, County Recorder
By George Buguez Deputy