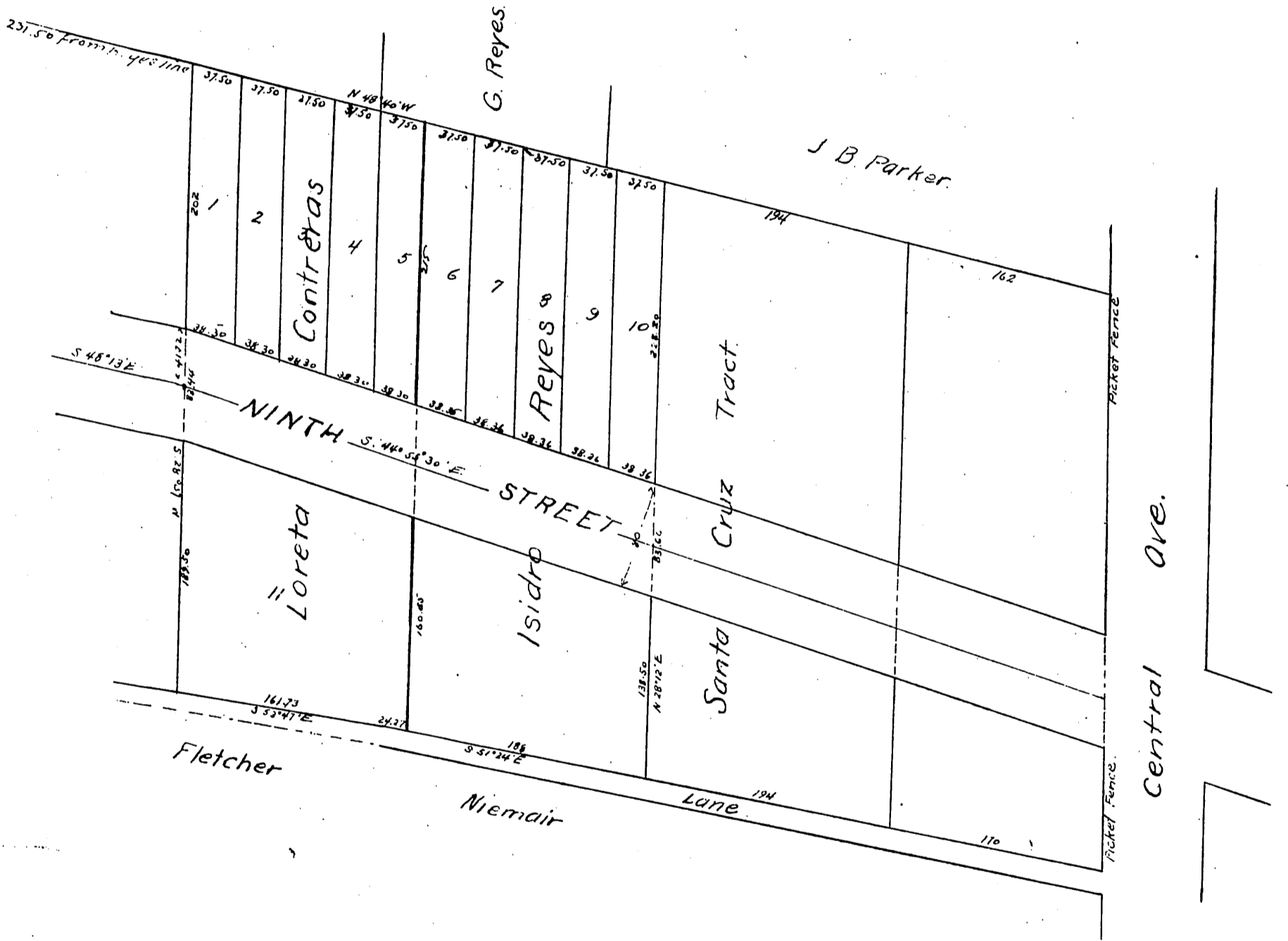


# MAP OF Contreras & Reyes Subdivision

Surveyed in Sept 1<sup>st</sup> 1888 by J A Bernal Sur & C.E.  
Scale 40 ft = 1 inch.



A full, true and correct copy of the original  
(reduced to the scale of 100 feet to one inch)  
recorded Nov 9, 1889 at 53 min past 10 A.M.  
at request of S Sepulveda.  
John W. Francis, County Recorder  
By George Hughes, Deputy