

PLAT
OF
Nathan Cole Jr's.

Resubdivision of Lots 10, 11, 12, 13, 14, 19 and 20 Block "B"
of Addison Tract.

East Los Angeles, Cal.

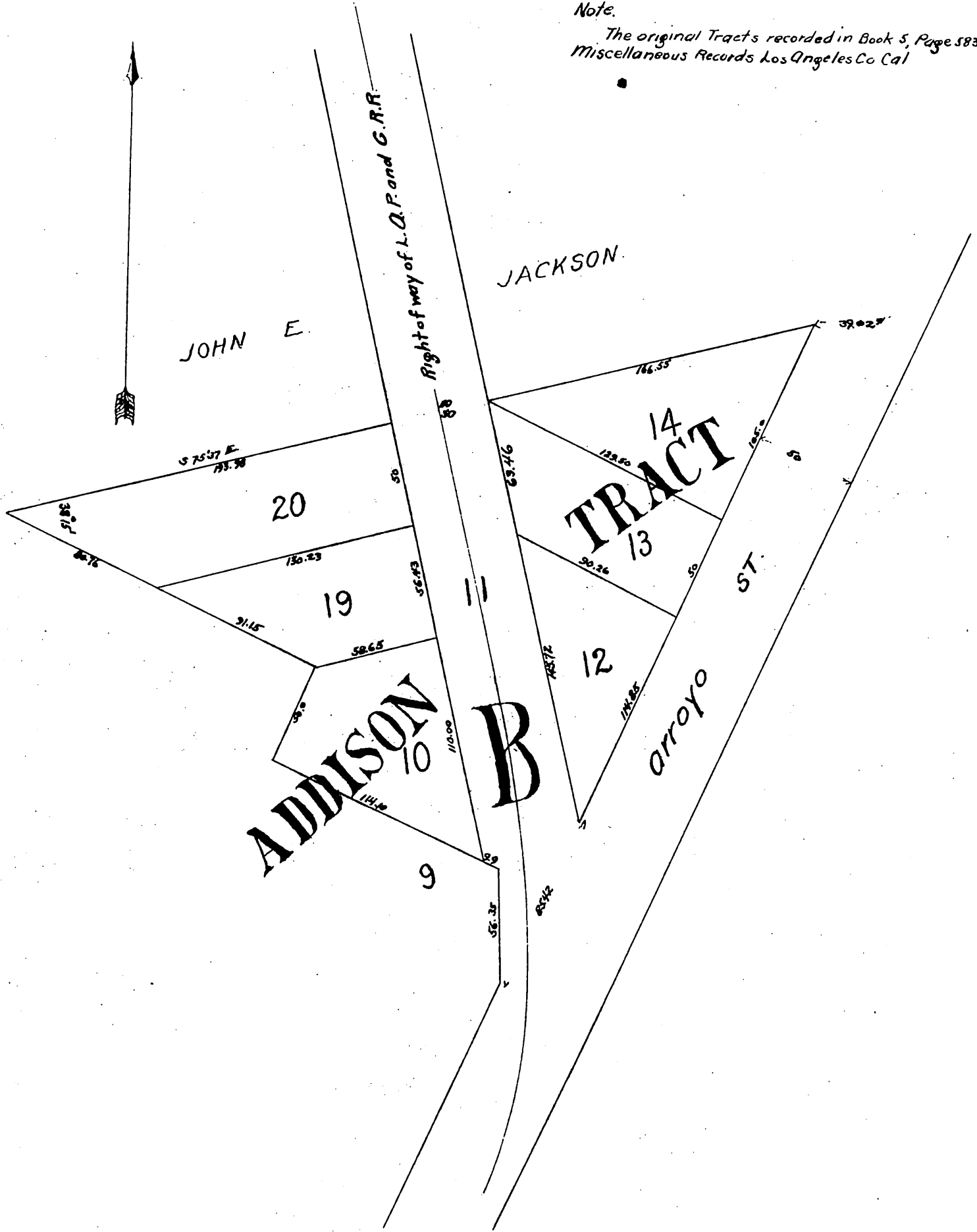
Surveyed by W. F. McClure

Scale 30'=1'

Nov. 1st 1889

Note.

The original Tracts recorded in Book 5, Page 583
Miscellaneous Records Los Angeles Co Cal



A full, true and correct copy of the original
(reduced to the scale of 60 feet to one inch)
recorded Nov. 30, 1889 at 5 min past 10 A.M.
at request of Nathan Cole Jr

John B. Francis, County Recorder

By George Hughes, Deputy