

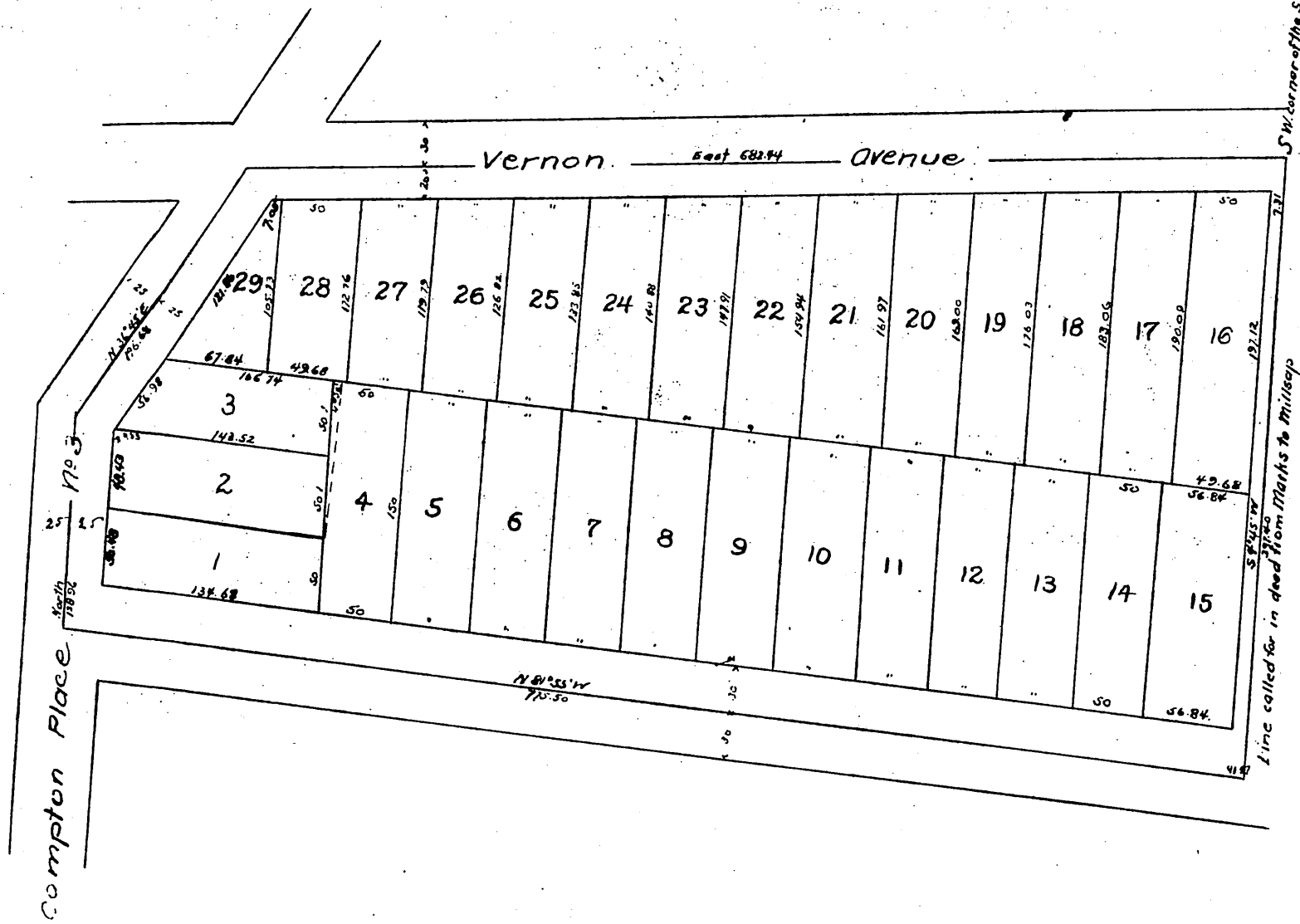


# MAP OF MILLSAP'S ADDITION TO VERNONDALE

*Being a subdivision of 6 acres in the S.E. 1/4 of the S.E. 1/4  
of the S.W. 1/4 of Section 9, T. 2. S. Range 13 West S. B. and M.*

*Subdivided at the request of Thos. Millsap.  
Sept 1887 by McClure Bros.*

*Scale Fifty ft. to 1 in.*



*A full, true and correct copy of the original  
(reduced to the scale of 100 feet to one inch)  
recorded Dec 4, 1889 at 4 min past 3 P.M.  
at request of Thos Millsap*

*John W. Francis, County Recorder.  
By George Duques, Deputy.*