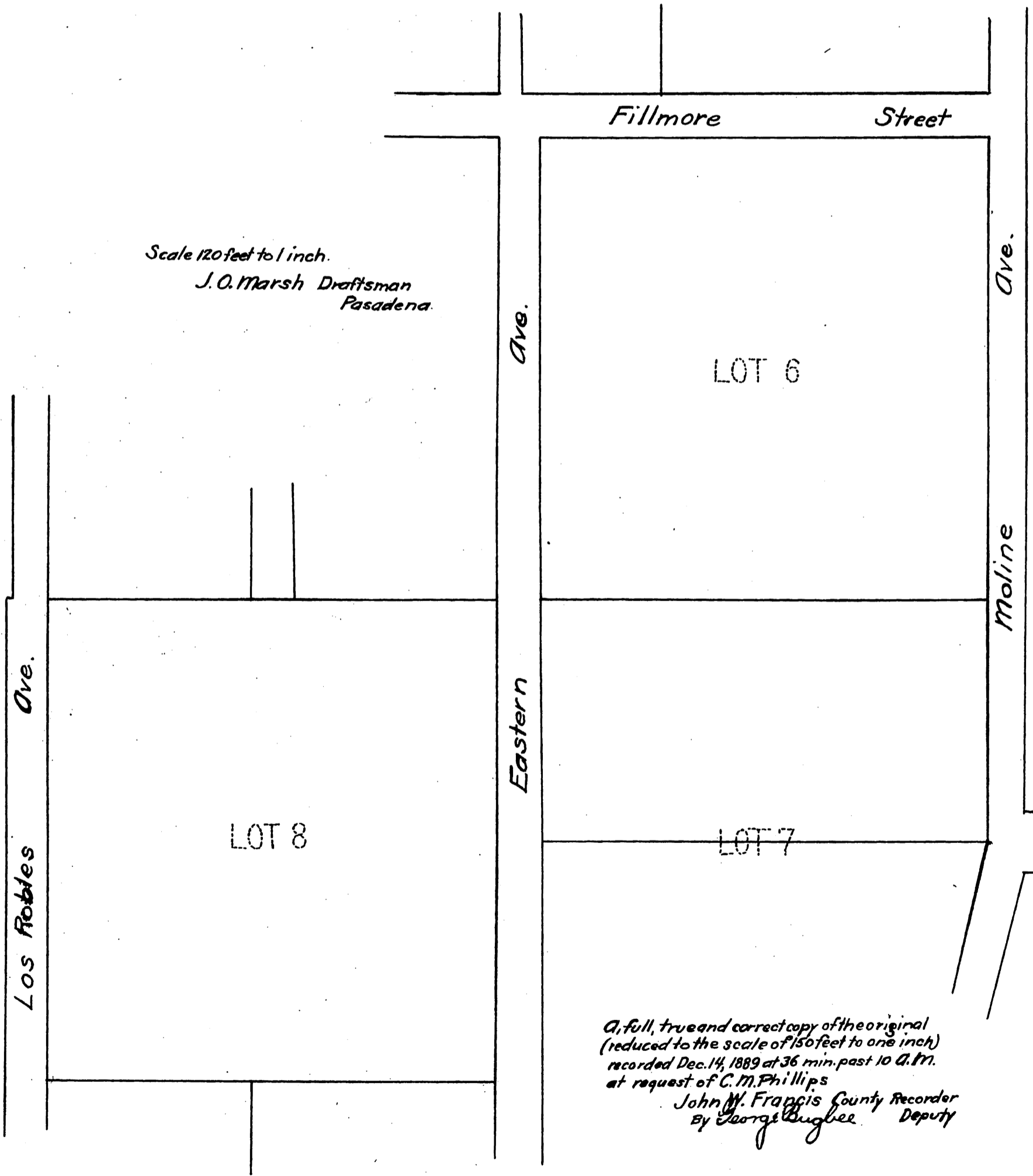


Phillip's Re-plat

OF

Blocks P & R and South 310 feet of Blocks N & O and
North 310 feet of Blocks S & T of
Raymond Addition to Pasadena

as recorded in Book 18, pages 19 to 21 Miscellaneous Records of Los Angeles, Cal.
Being Lots 6 and 8 and North 1/2 of Lot 7 Block P, San Pasqual Tract
as recorded in Book 3, page 315 Miscellaneous Records of Los Angeles Co. Cal.



Scale 120 feet to 1 inch.
J. O. Marsh Draftsman
Pasadena.

A full, true and correct copy of the original
(reduced to the scale of 150 feet to one inch)
recorded Dec. 14, 1889 at 36 min. past 10 A.M.
at request of C. M. Phillips
John W. Francis County Recorder
By George Hughes Deputy