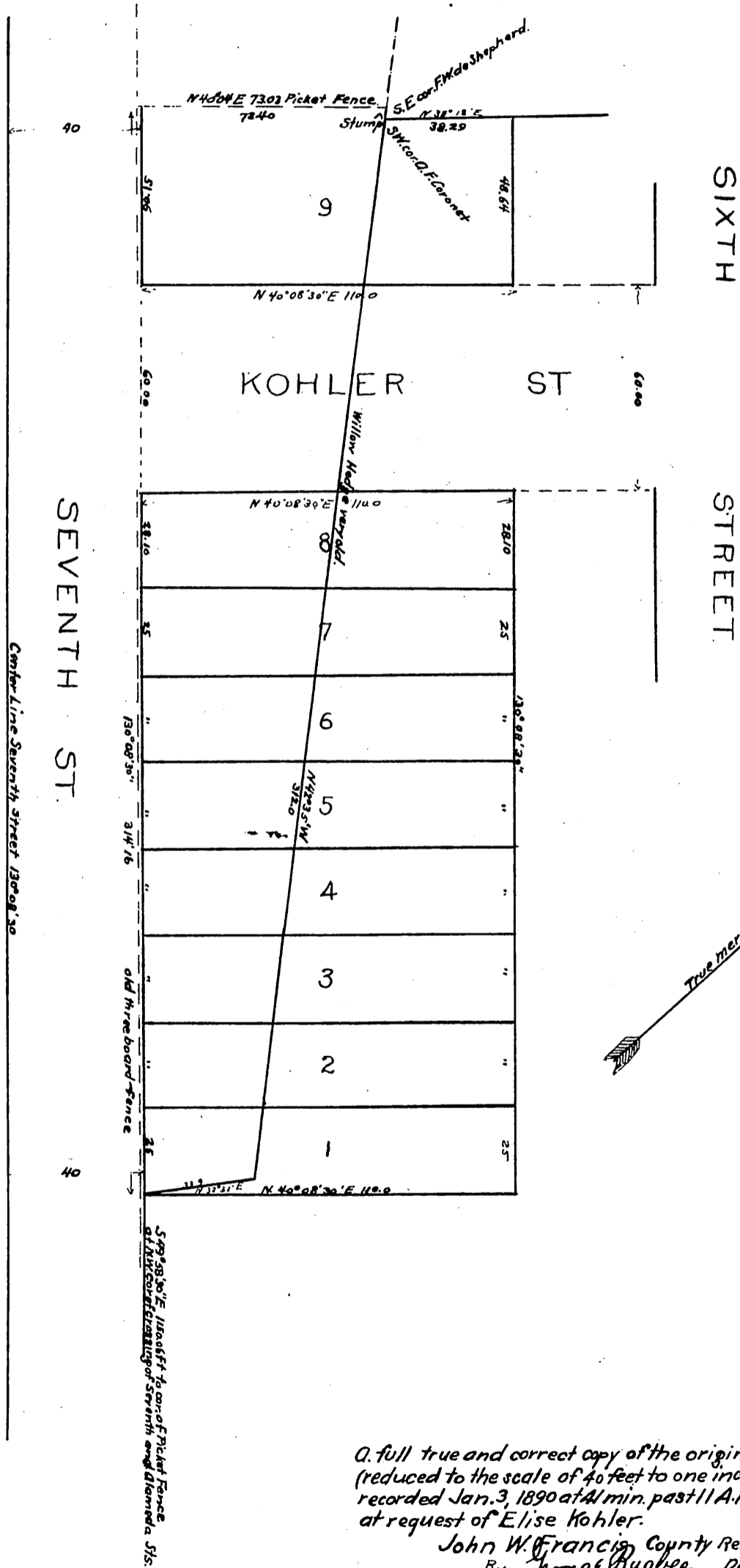


PLAT
OF
W. J. Fisher's Addition N^o 1
TO
Kohler and Frohling Tract
LOS ANGELES, CAL.
Surveyed Jan 1888 by J. H. Dockweiler
Scale 20 ft. to in

*Elise Kohler for
by J. W. Francis
for area in fact*



Center Line Seventh Street 130° 08' 30"

S 70° 08' 30" E 130.08' 30" of the corner of Picket Fence of the corner of Seventh and Alameda Sts.

A. full true and correct copy of the original
(reduced to the scale of 40 feet to one inch)
recorded Jan. 3, 1890 at 4 min. past 11 A.M.
at request of Elise Kohler.
John W. Francis County Recorder.
By George Bugbee Deputy.