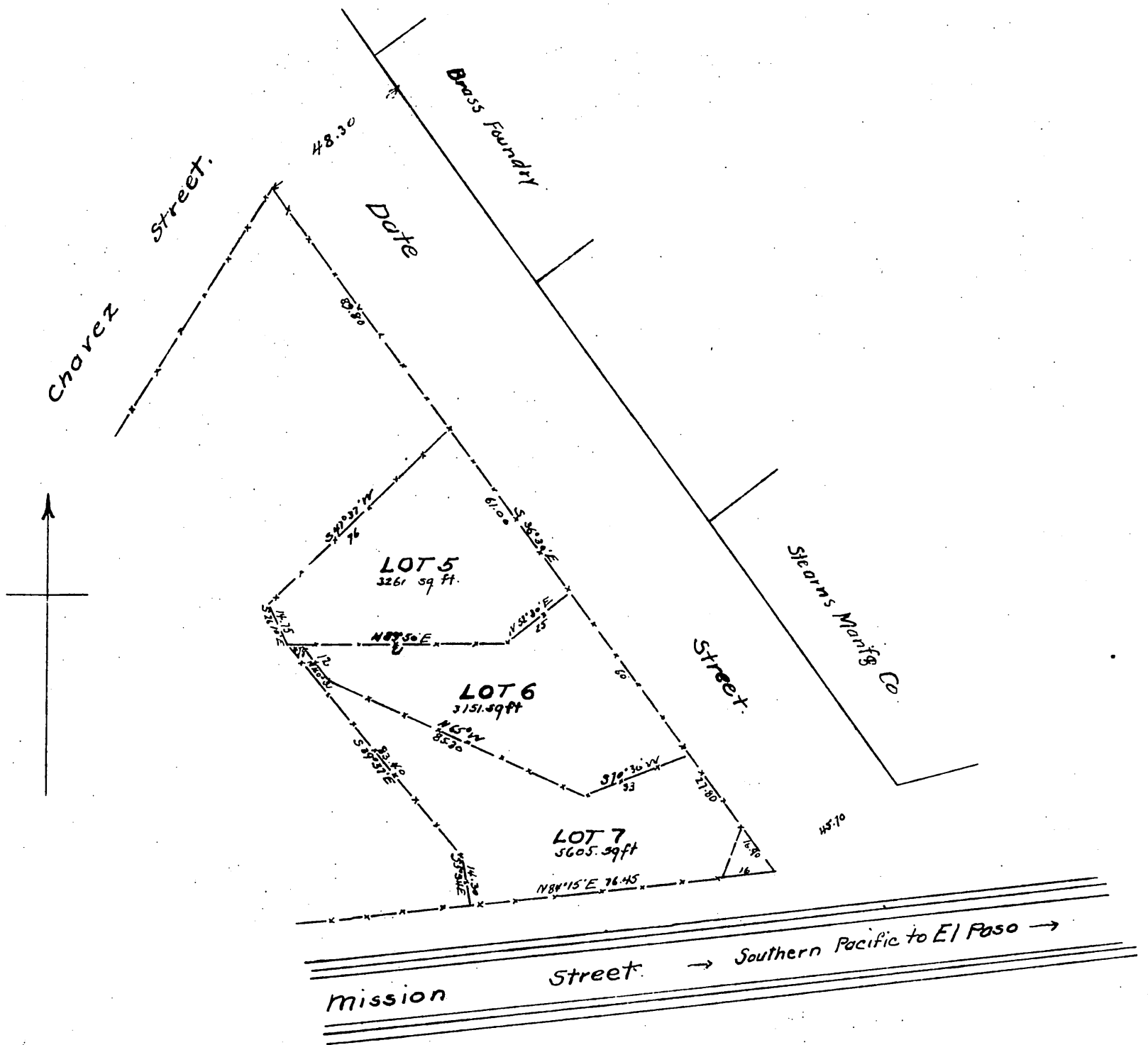


MAP  
 showing lots 5 6 & 7 of the  
**BLOW TRACT**  
 City of Los Angeles  
 as inclosed by fences

Located at request of Joseph Blow Dec 20, 1889  
 by Wright & Nicholson.  
 Scale 20' to inch



A full, true and correct copy of the original  
 (reduced to the scale of 40 feet to one inch)  
 recorded Jan'y 7, 1890 at 41 min past 11 A.M.  
 at request of Jos. Blow

John W. Francis, County Recorder.  
 By George Hughes, Deputy.