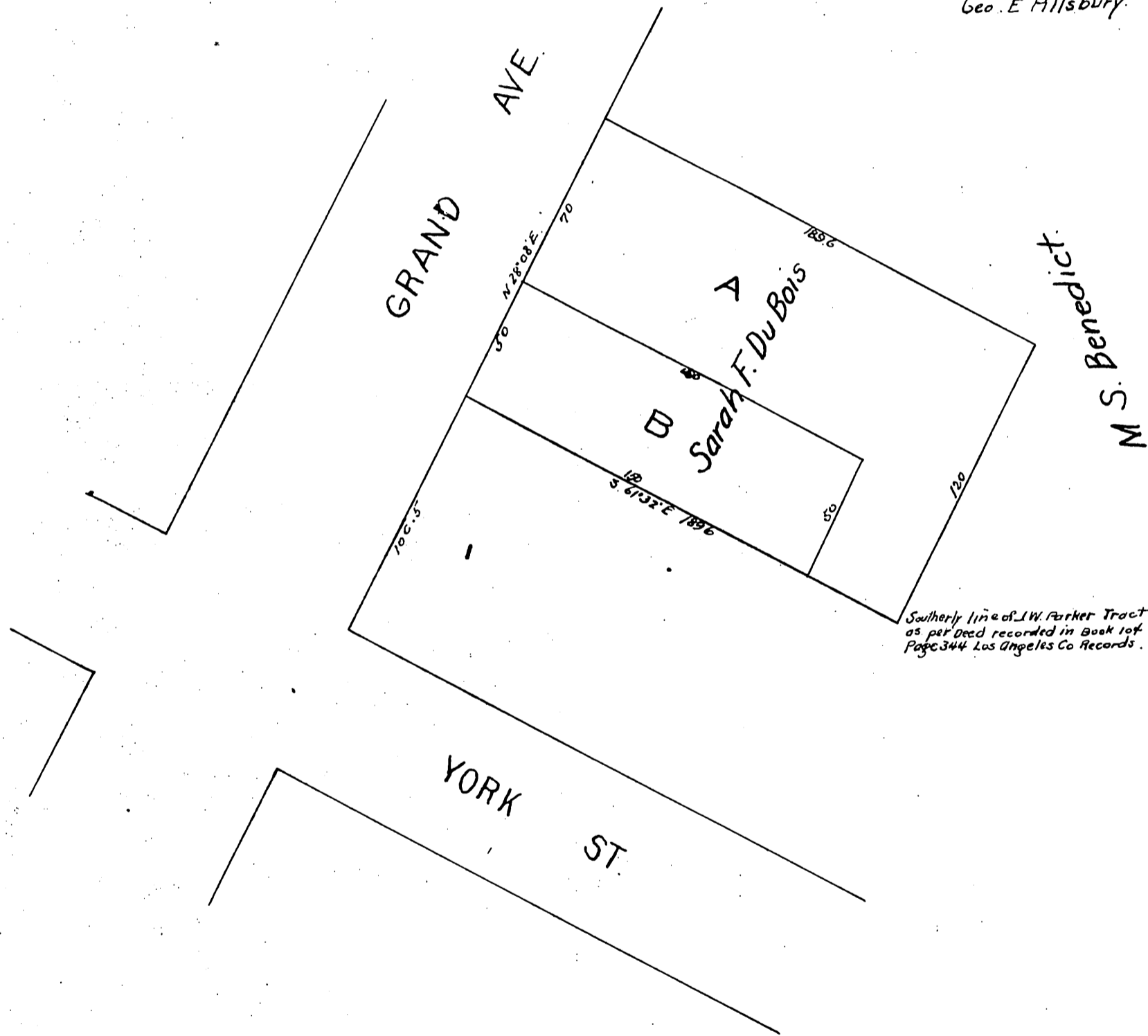


PLAT  
 OF THE  
 Sarah F. Du Bois Tract  
 City of Los Angeles, Cal.

January 7<sup>th</sup> 1890 by Geo E. Pillsbury, Surveyor  
 Scale 40 ft to one inch.

Note

The Sarah F. Du Bois Tract is that lot of land  
 deeded by Martha S. Benedict and Charles F.  
 Benedict to Sarah F. Du Bois dated October 14<sup>th</sup>  
 1885 and recorded in book of Deeds N<sup>o</sup> 147 Page  
 1 Los Angeles County Cal. Records.  
 Geo. E. Pillsbury.



Southerly line of J. W. Parker Tract  
 as per Deed recorded in Book 104  
 Page 344 Los Angeles Co Records.

A full, true and correct copy of the original  
 (reduced to the scale of 30 feet to one inch)  
 recorded Jan. 9, 1890 at 35 min past 12 m.  
 at request of Sarah F. Du Bois  
 John W. Francis, County Recorder  
 By George Bugbee, Deputy.