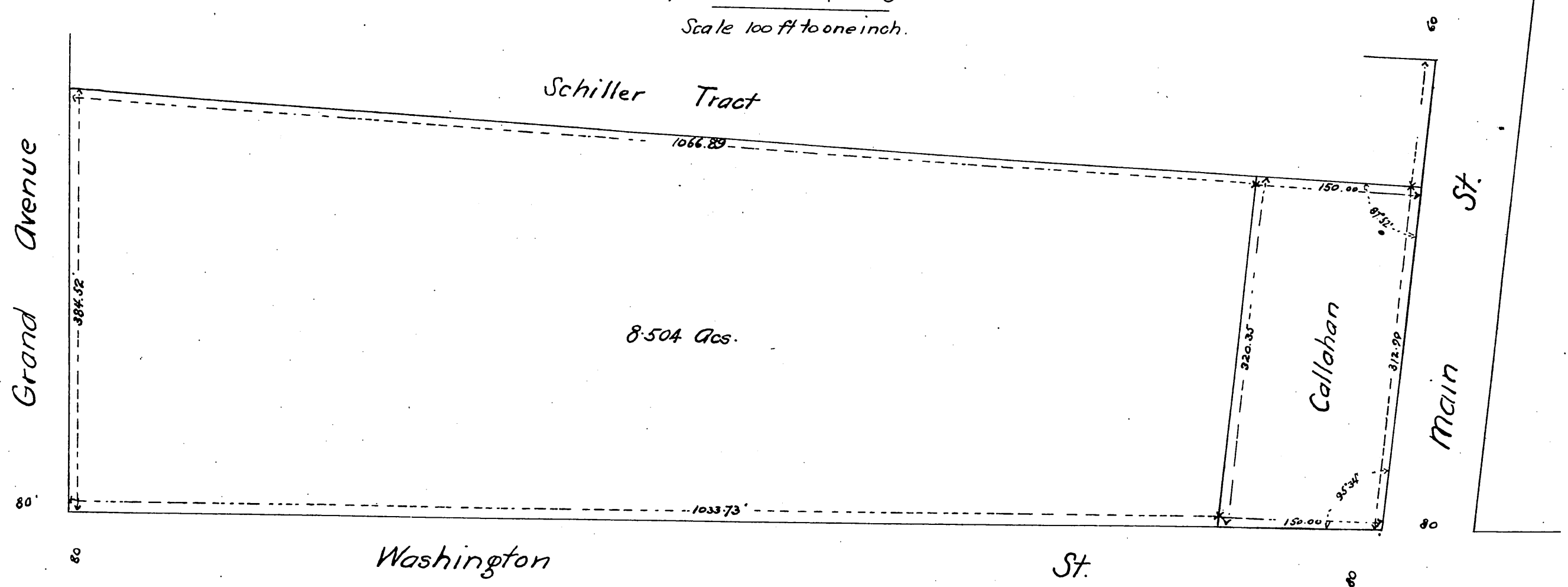


PLAT
 OF THE
 Unsold Portion^{of 1/2} Prager Tract.

— in the —
 City of Los Angeles, Cal.

Made at the request of Mrs. Mary J. Prager in Feb 1890

Scale 100 ft to one inch.



8.504 Acs.

A full, true and correct copy of the original
 recorded Feby 1, 1890 at 45 min past 10 A.M.
 at request of Mrs. Mary J. Prager.

John W. Francis, County Recorder.
 By George Bugbee, Deputy