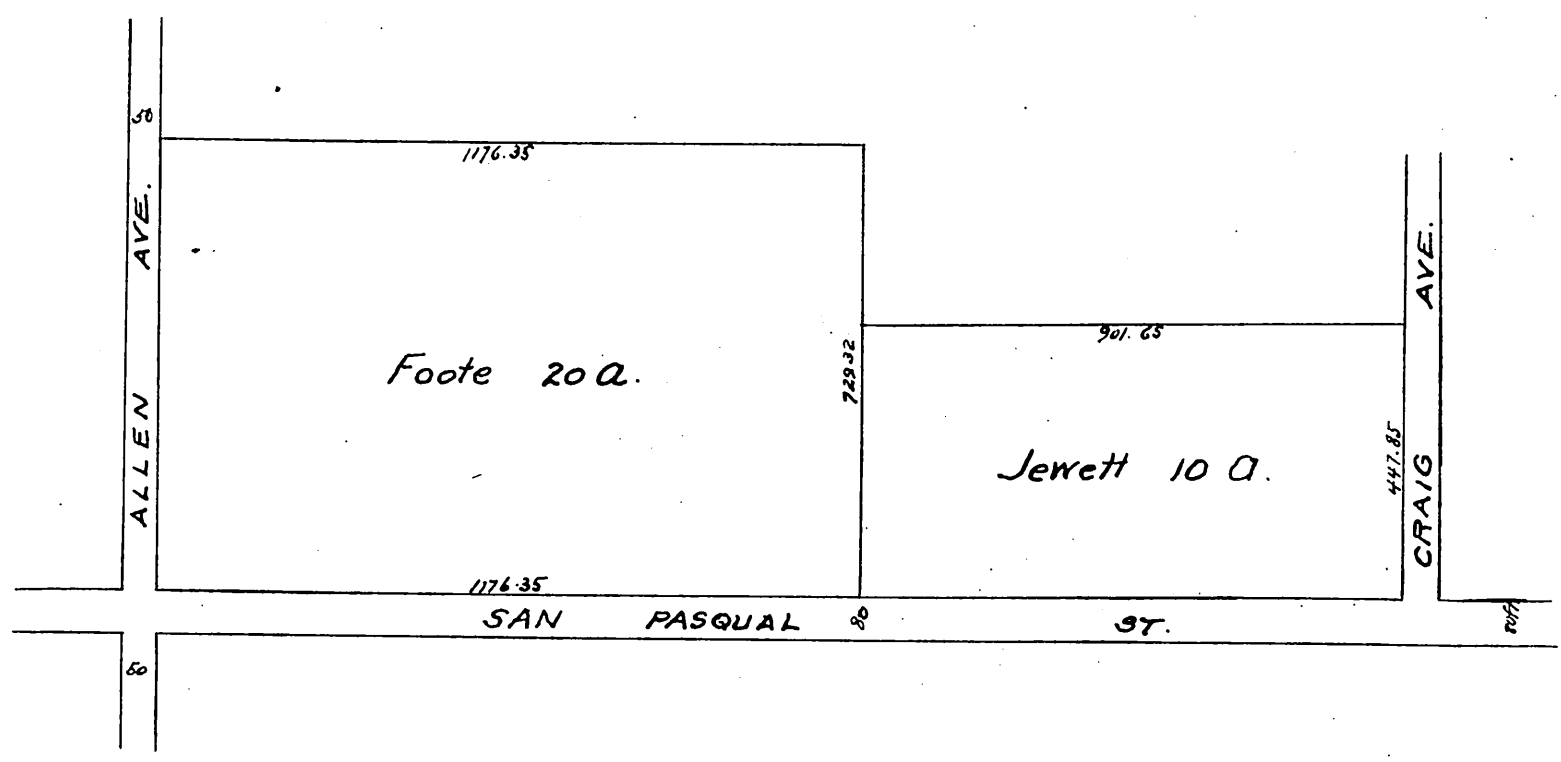


LANDS

OF

Frank A. Foote and Belle M. Jewett

formerly subdivided as Blocks B.C. D and E
Whitakers Subdivision of Marceline



A full, true and correct copy of the original
 recorded Feb 3 1890 at 1 min past 2 P.M.
 at request of F. A. Foote & Belle M. Jewett.
 John W. Francis, County Recorder
 By George C. Dugbee Deputy.