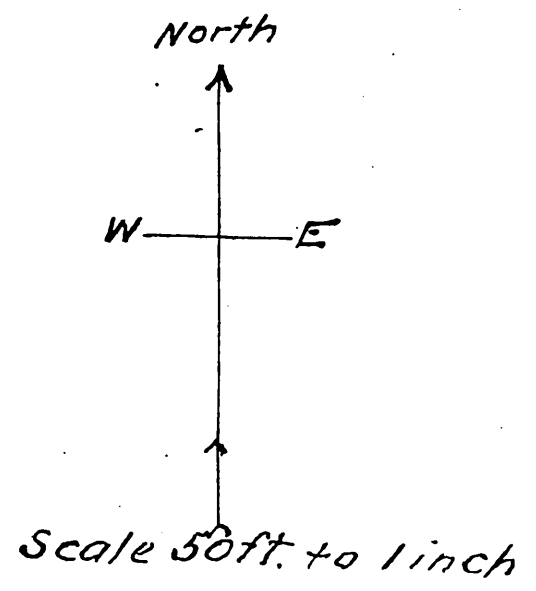
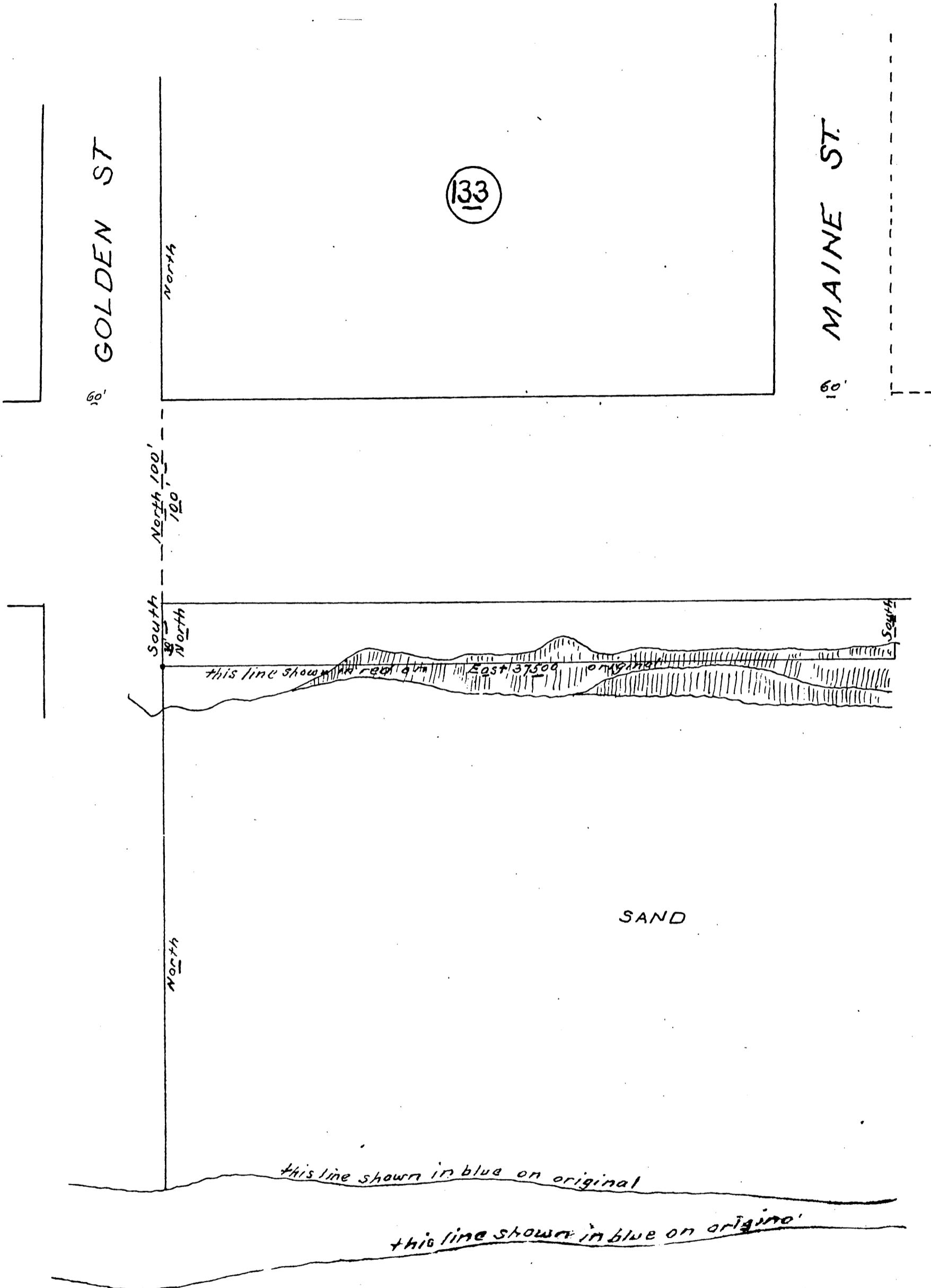


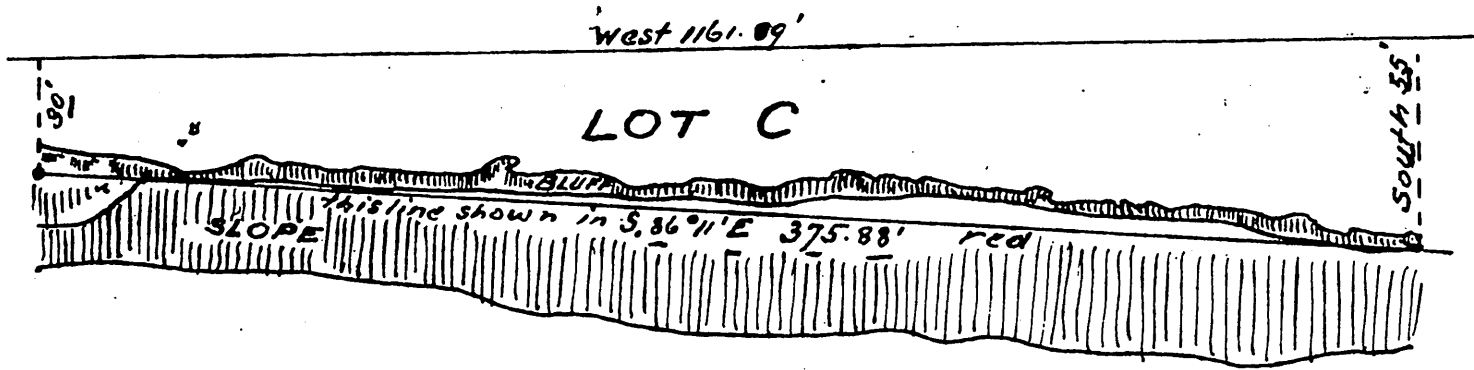
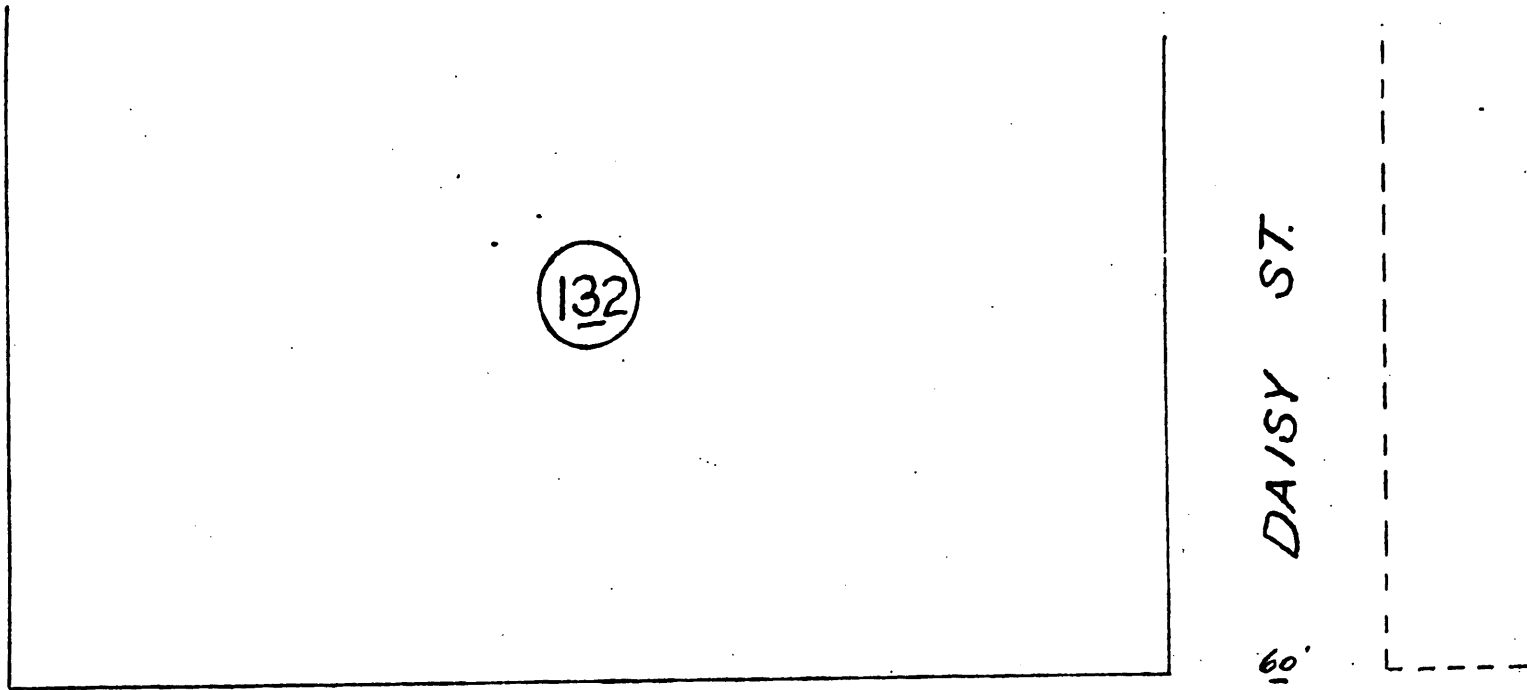
MAP
of the Ocean Front of the
CITY OF LONG BEACH
FROM
Golden Street to Alamitos Beach

surveyed by Charles T. Healey and Will.
F. Sweeney January 1889
W.F.S

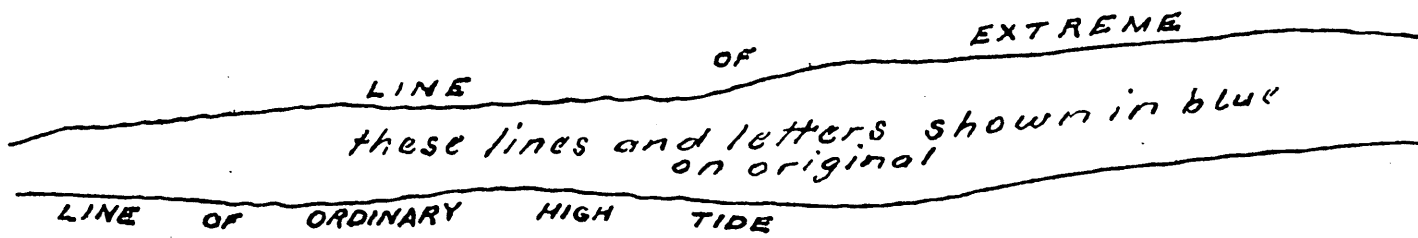




Note letters and figures with dash under are shown in red on original

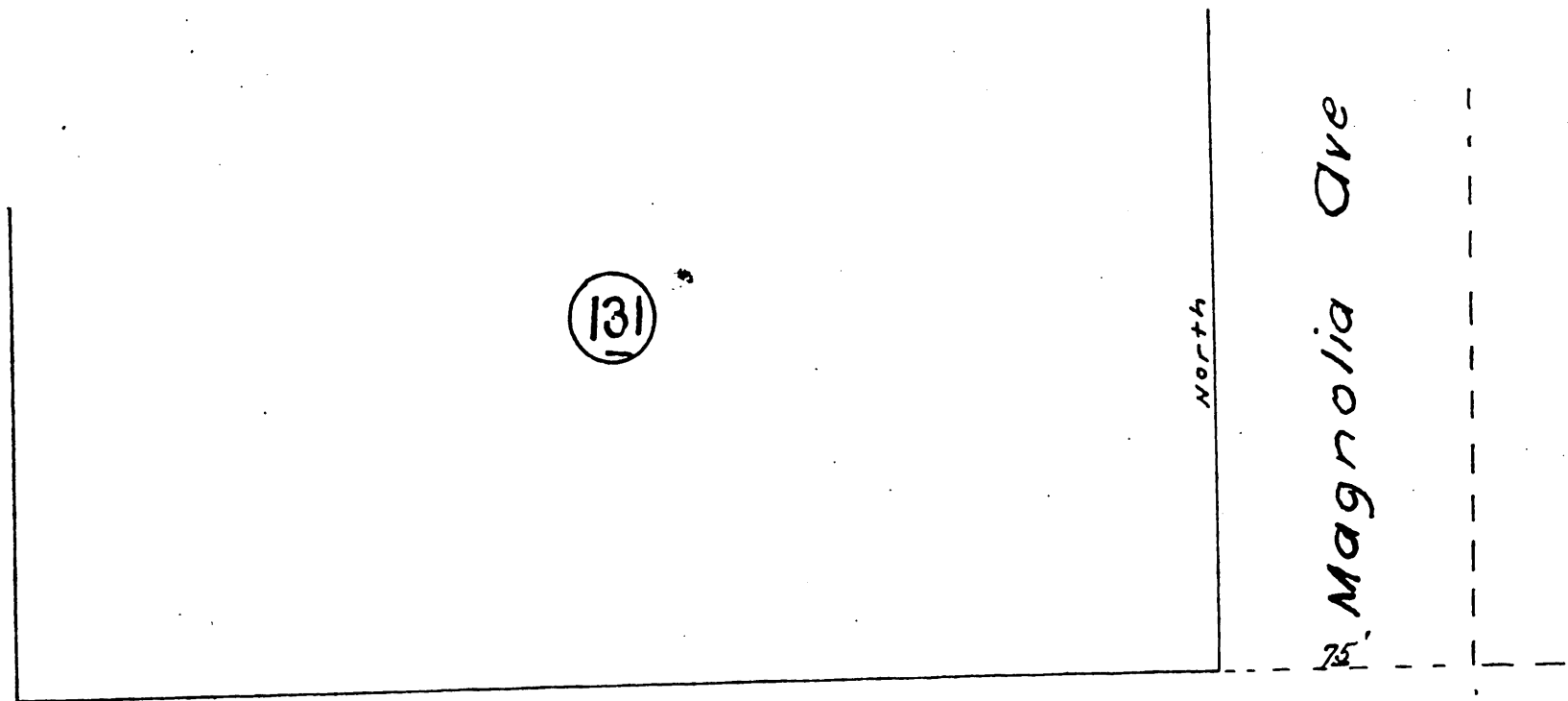


LOT I

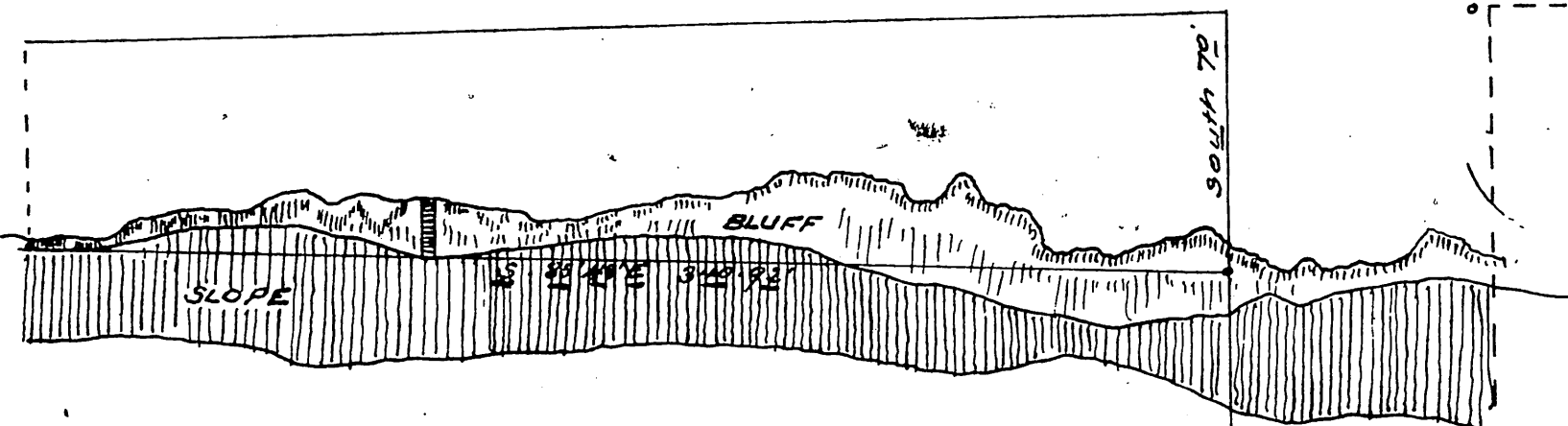


Note underlined letters and figures are shown in red on original

0001



100'

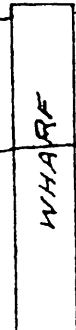


SAND

South

HIGH TIDE

these lines and figures shown in blue on original



note underlined figures and letters shown in red on original

108

Ocean

N 10° 47' E 100.63'
100'

N 86° 26' W 2587.58'

LOT D

North 78'

Graded Roadway

SLOPE

BLUFF S. 87° 40' E 508.42'

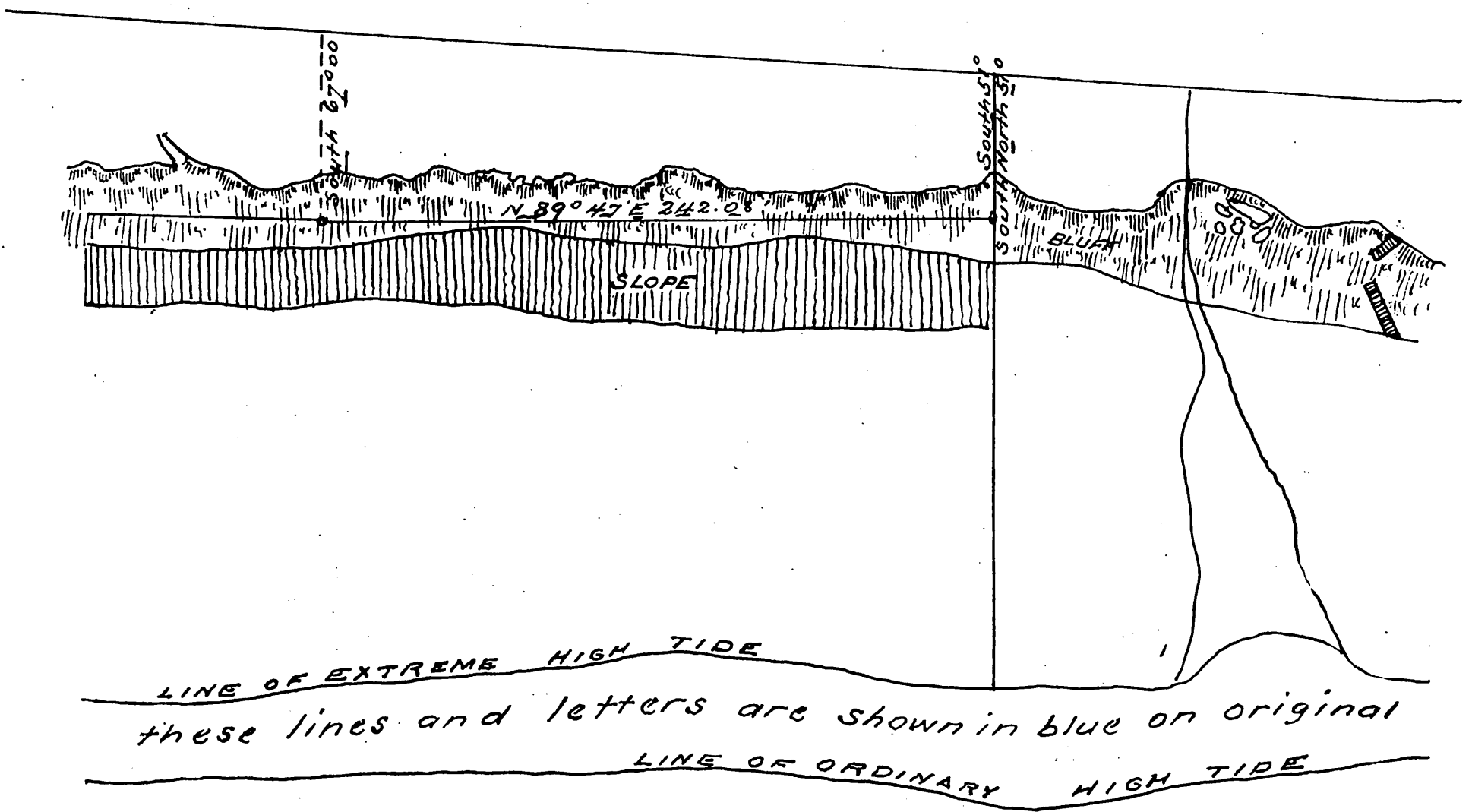
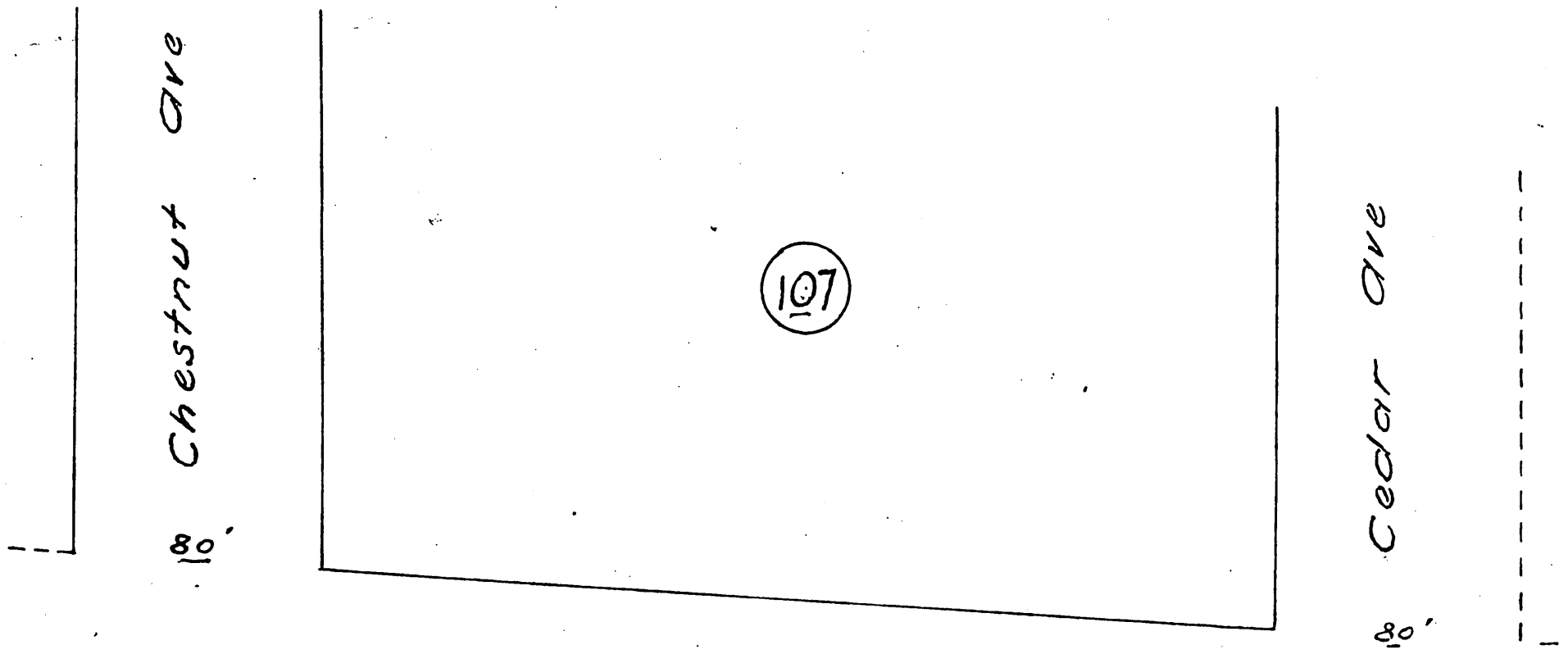
North

LOT J
SAND

these lines are shown in blue on original

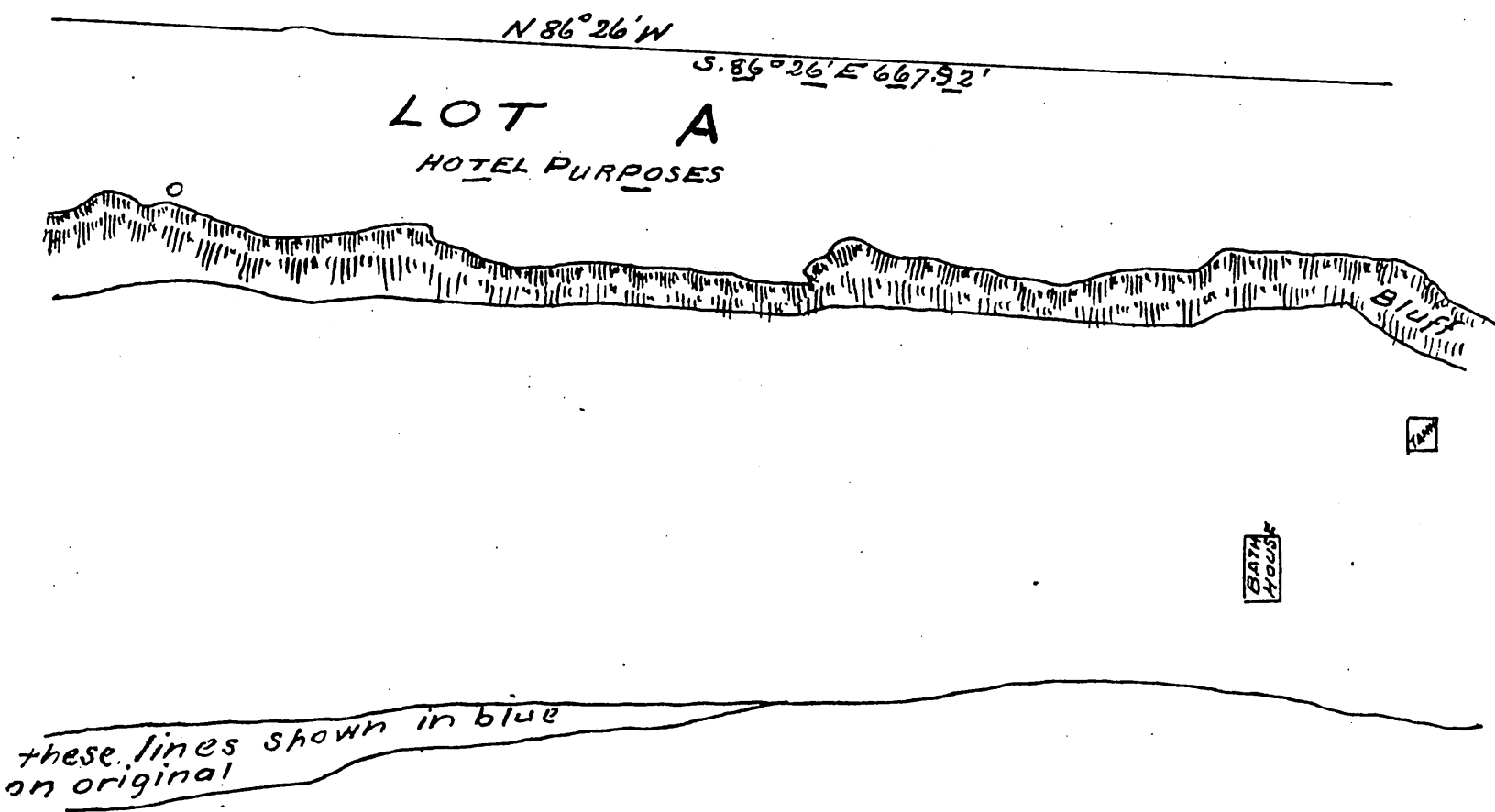
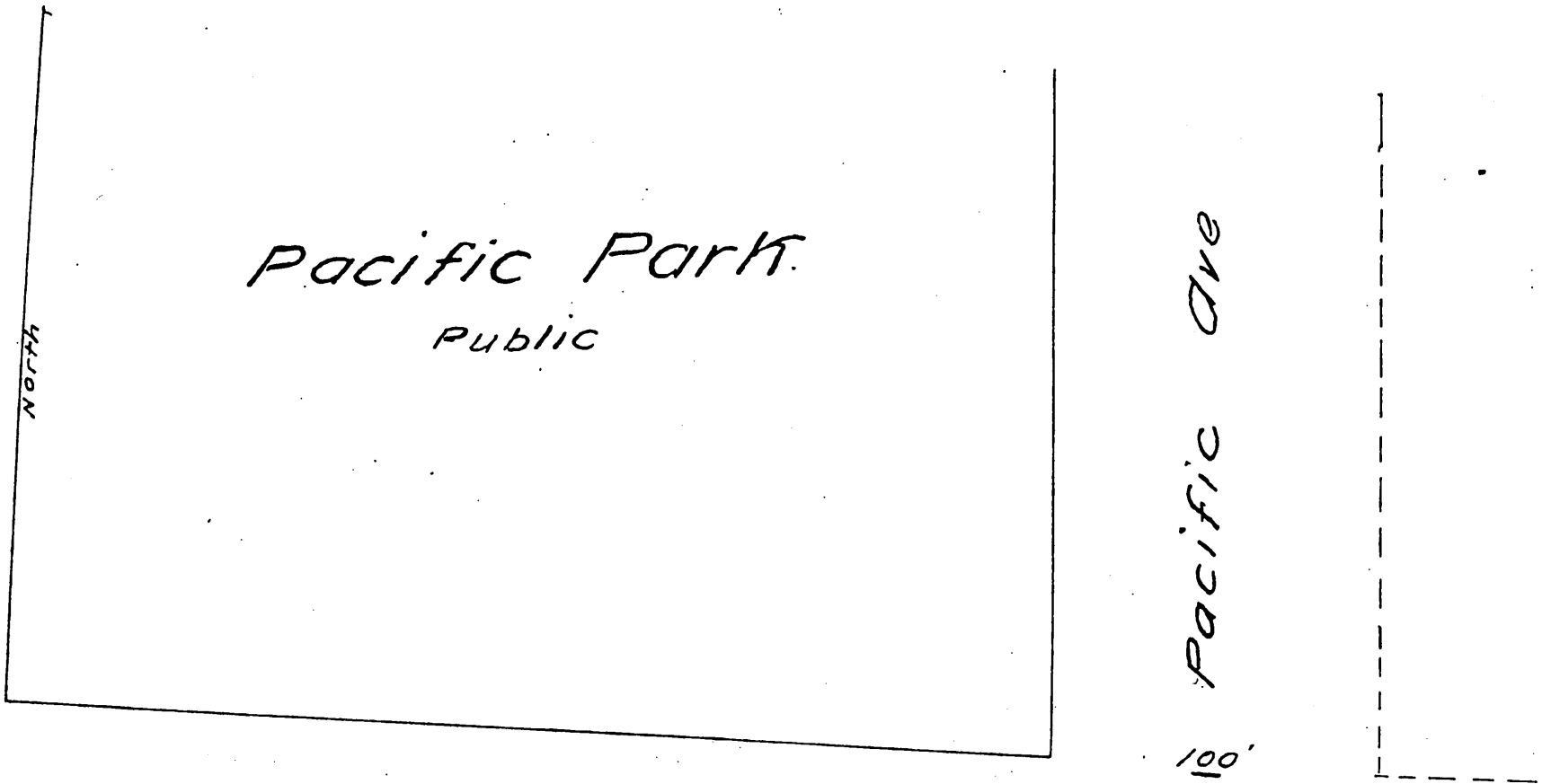
Note underlined letters and figures
are shown in red on original

3923

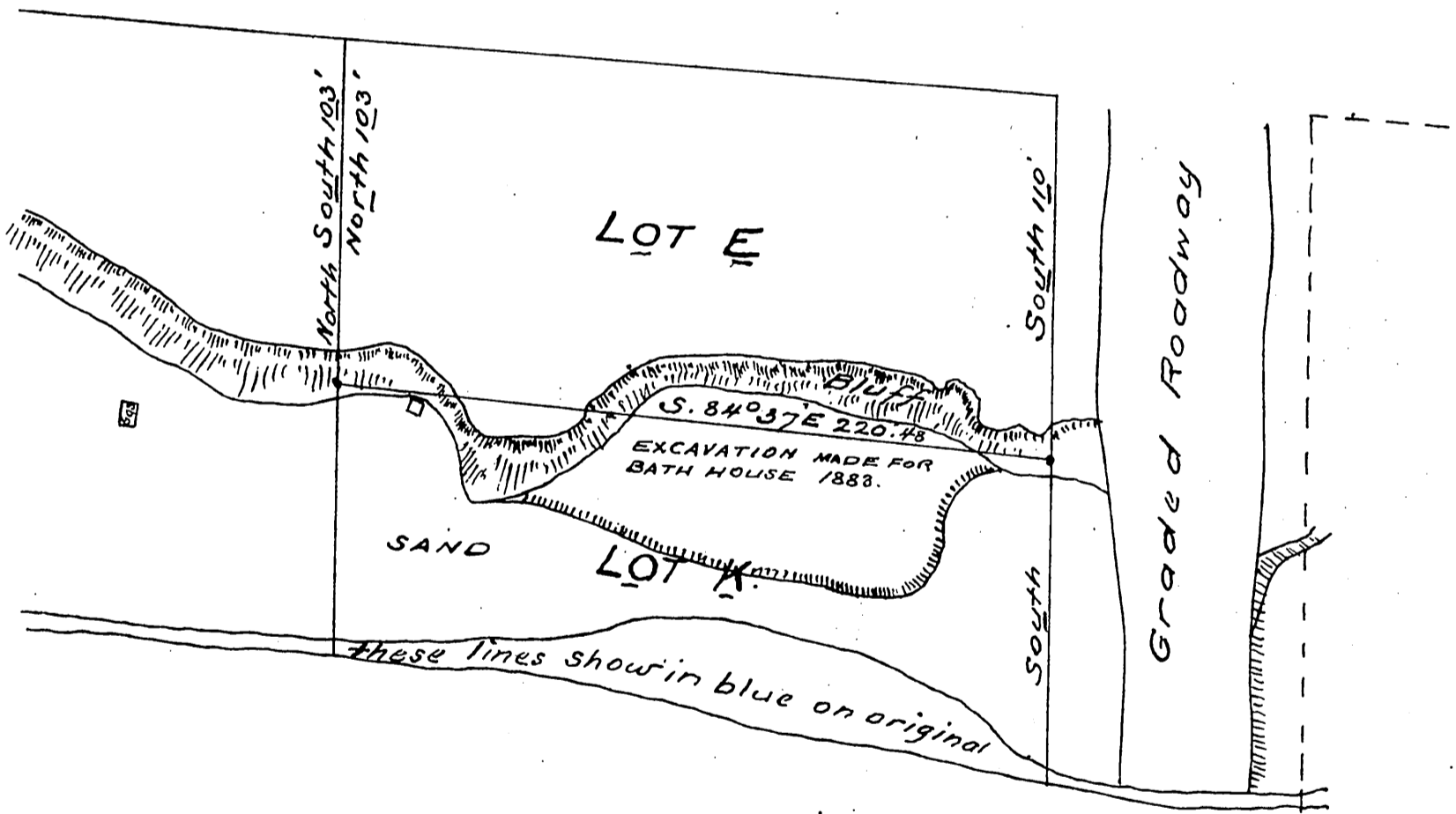
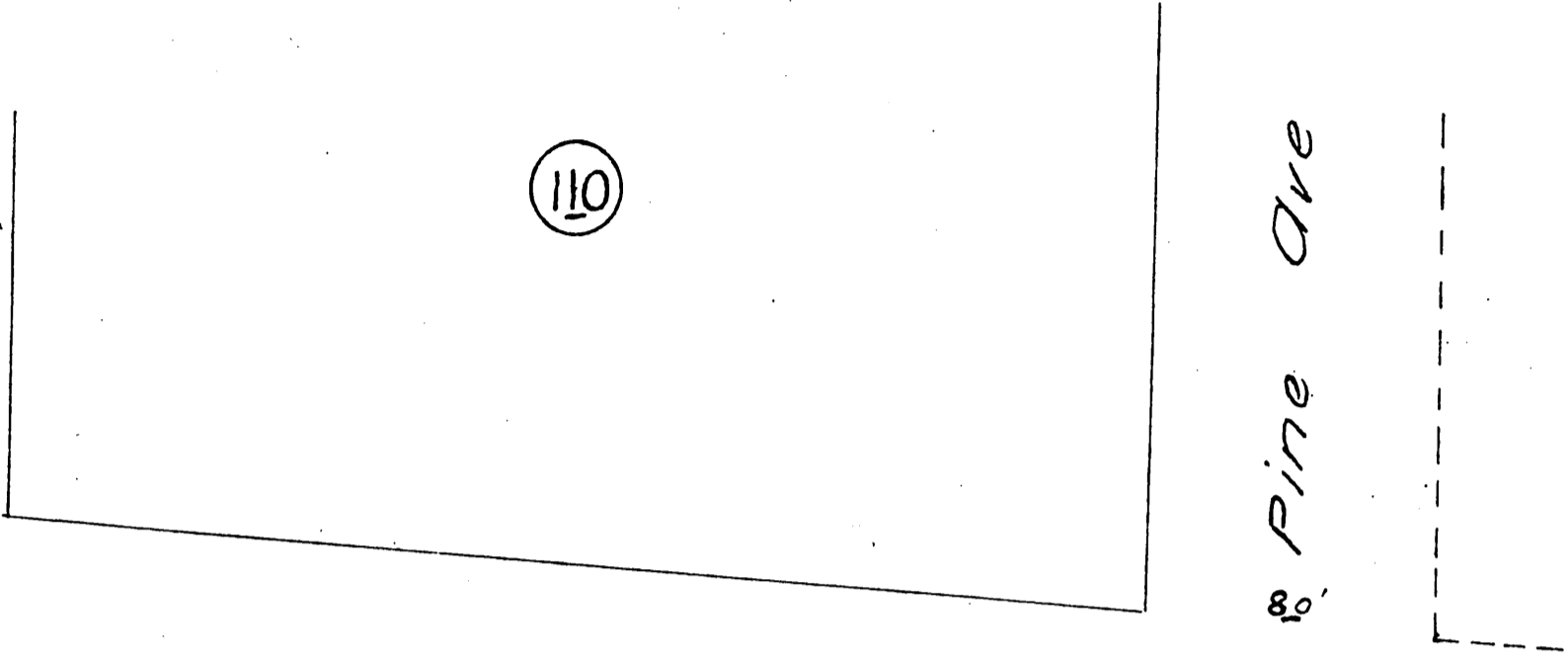


Note

underlined figures and letters are shown in red on original

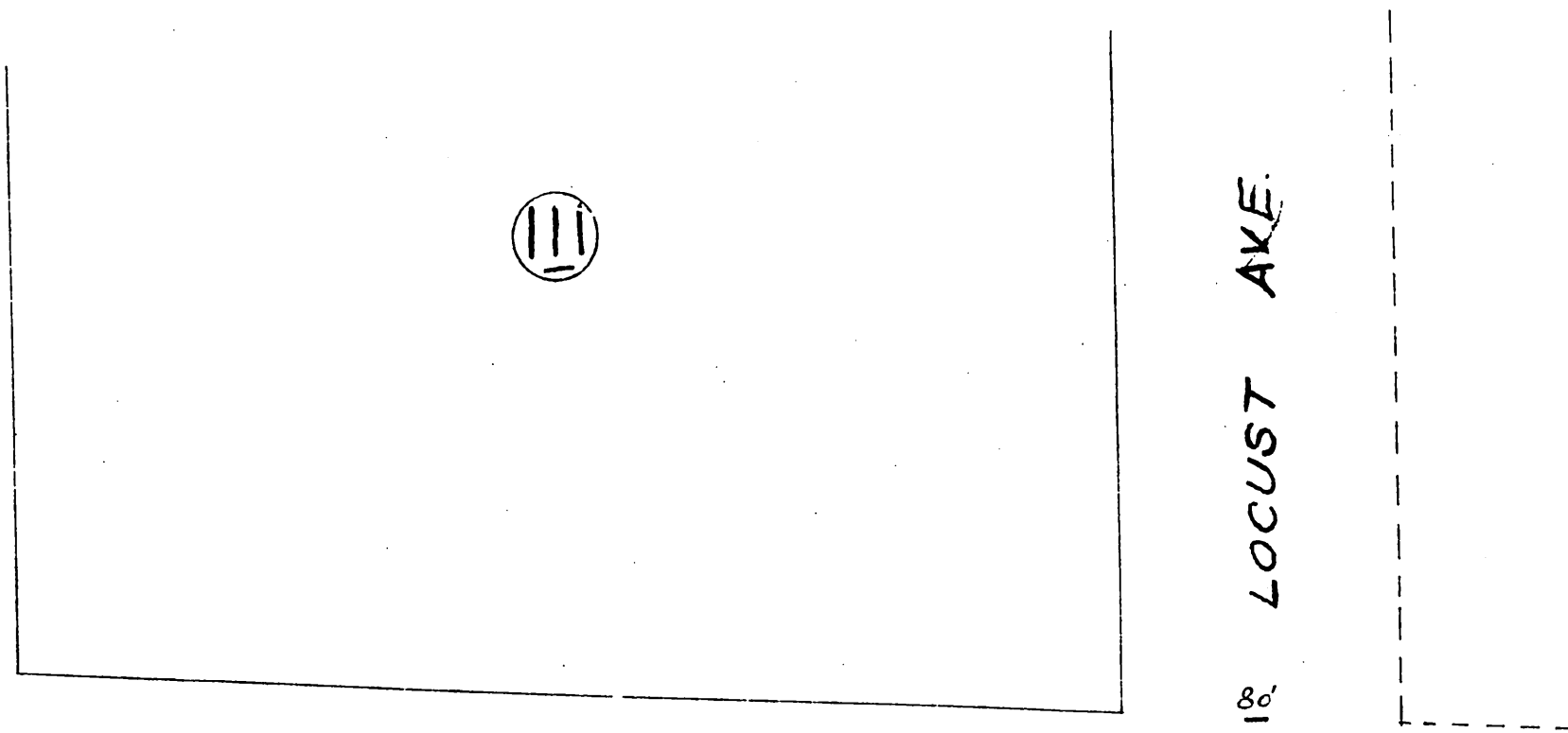


Note Figures and letters underlined are shown in red on original

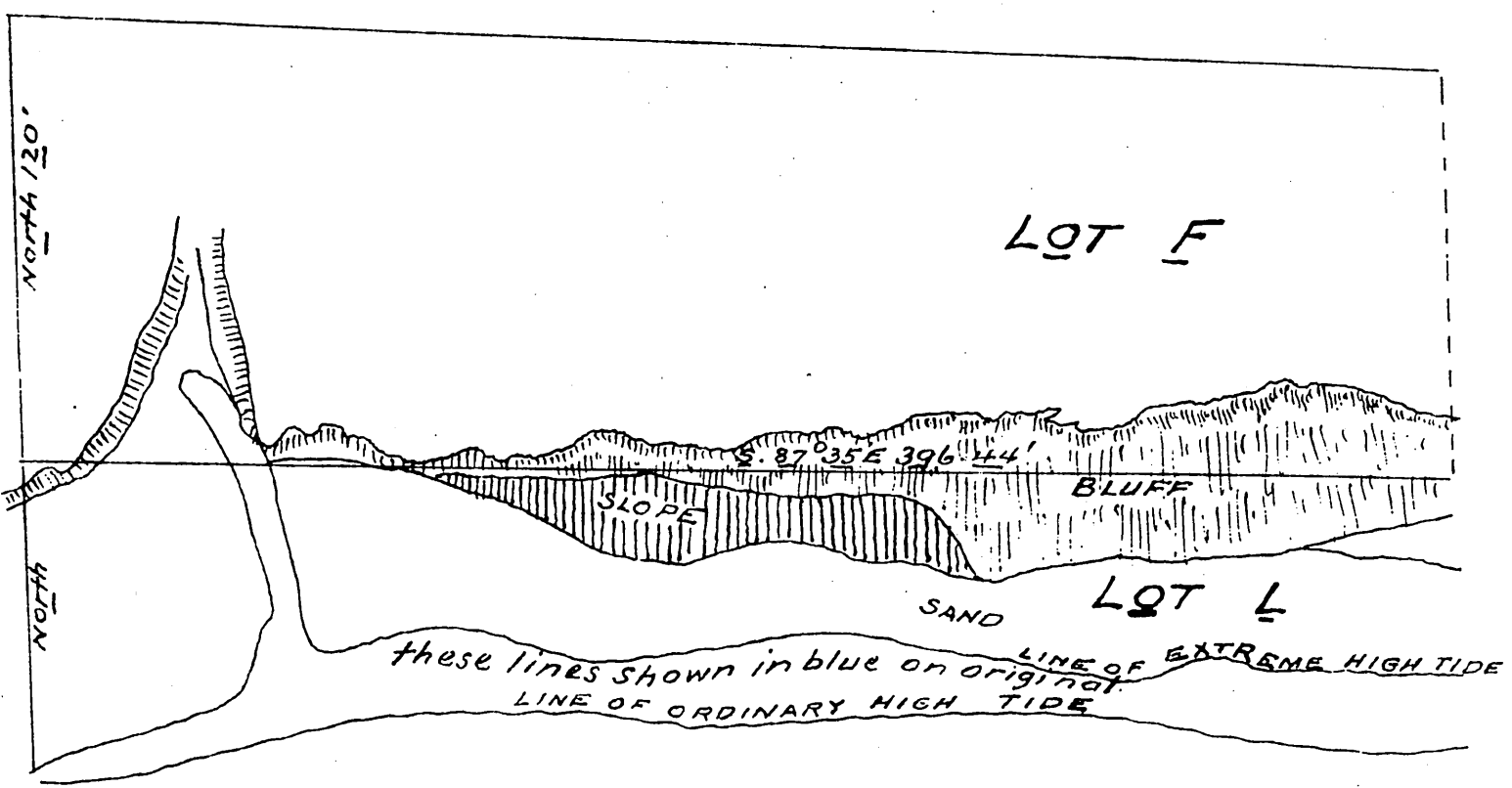


PACIFIC

Note Underlined figures and letters are shown in red on original



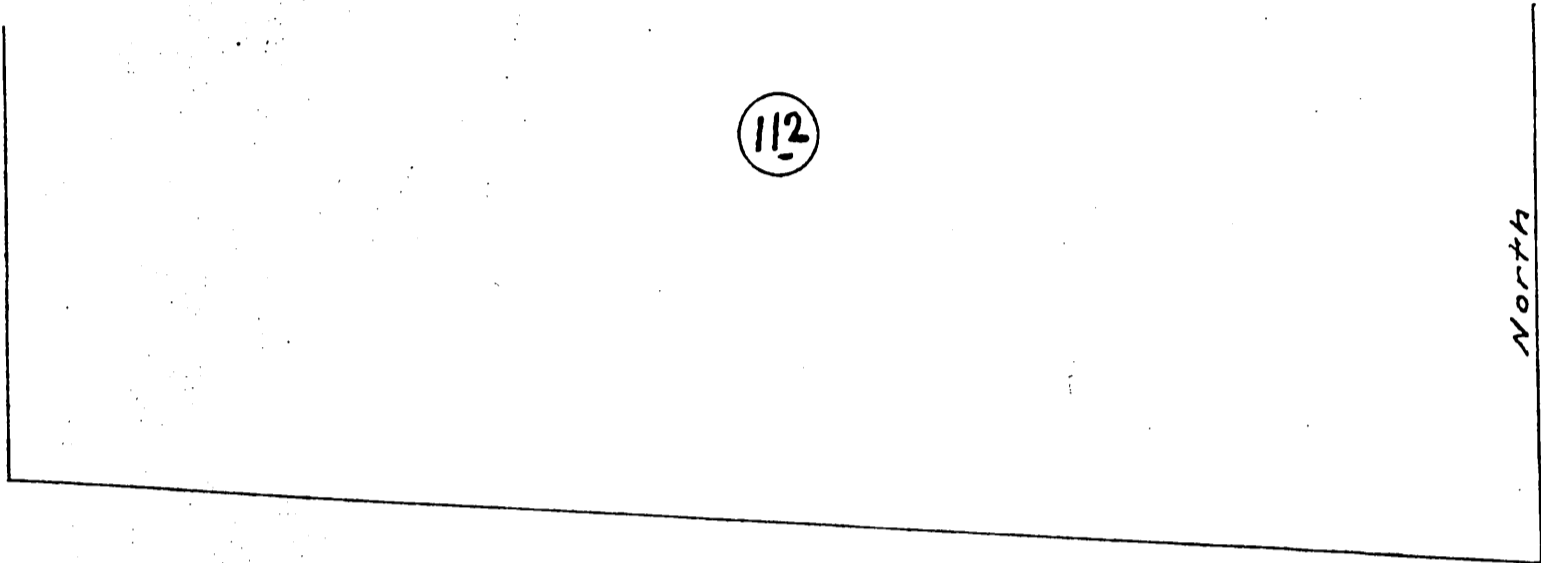
PARK



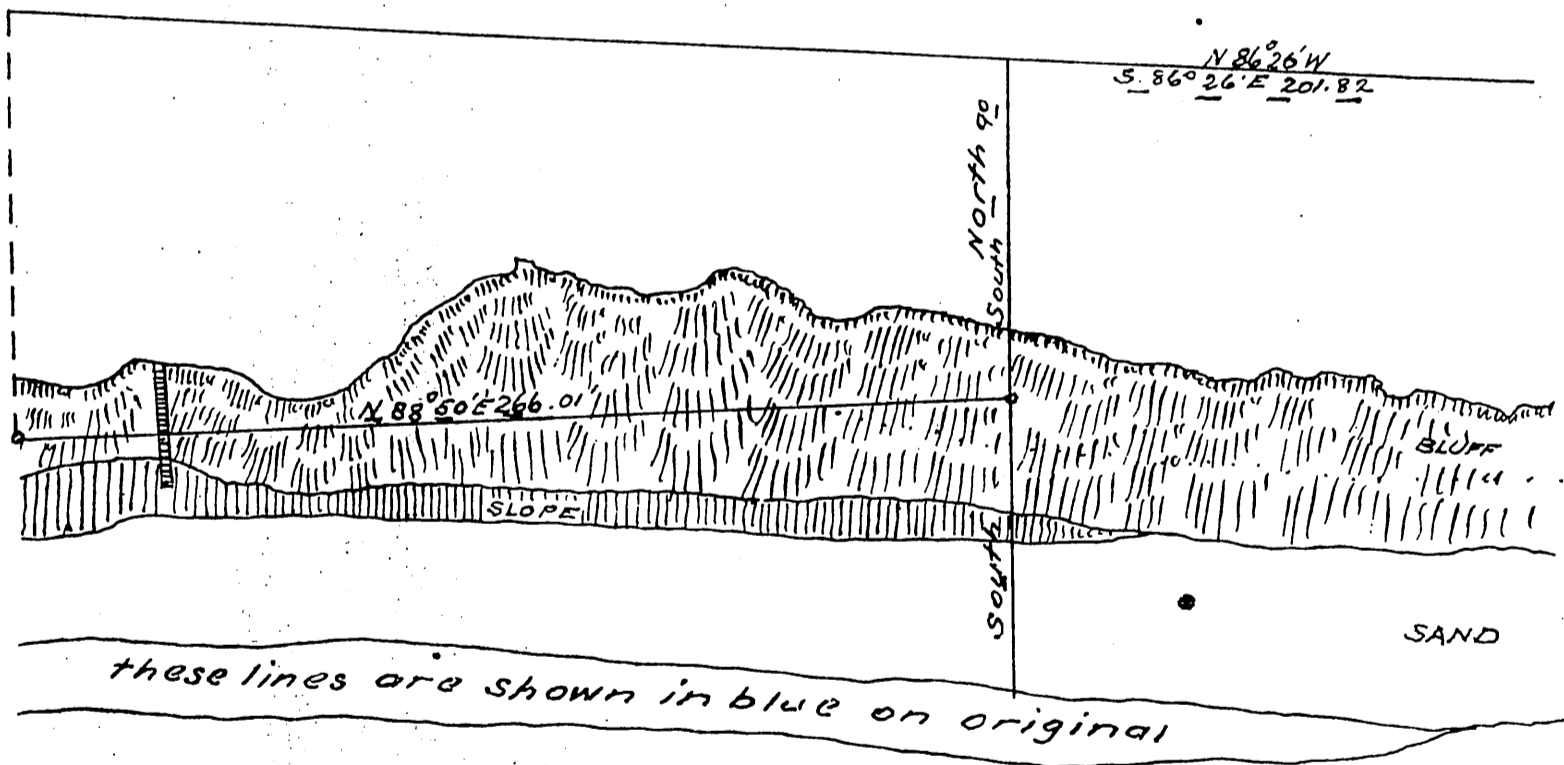
OCEAN

Note underlined figures and letters are shown in red on original

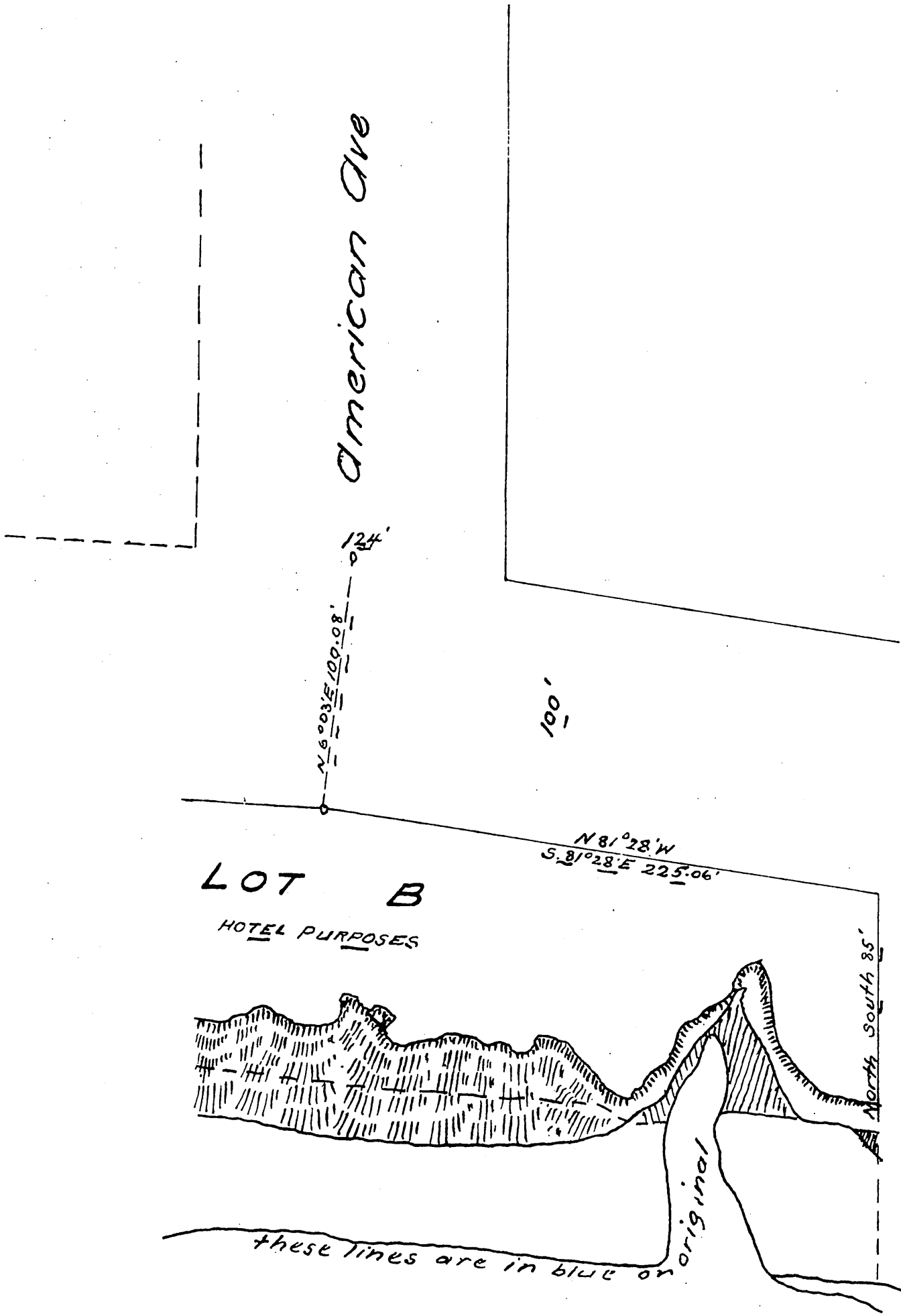
3937



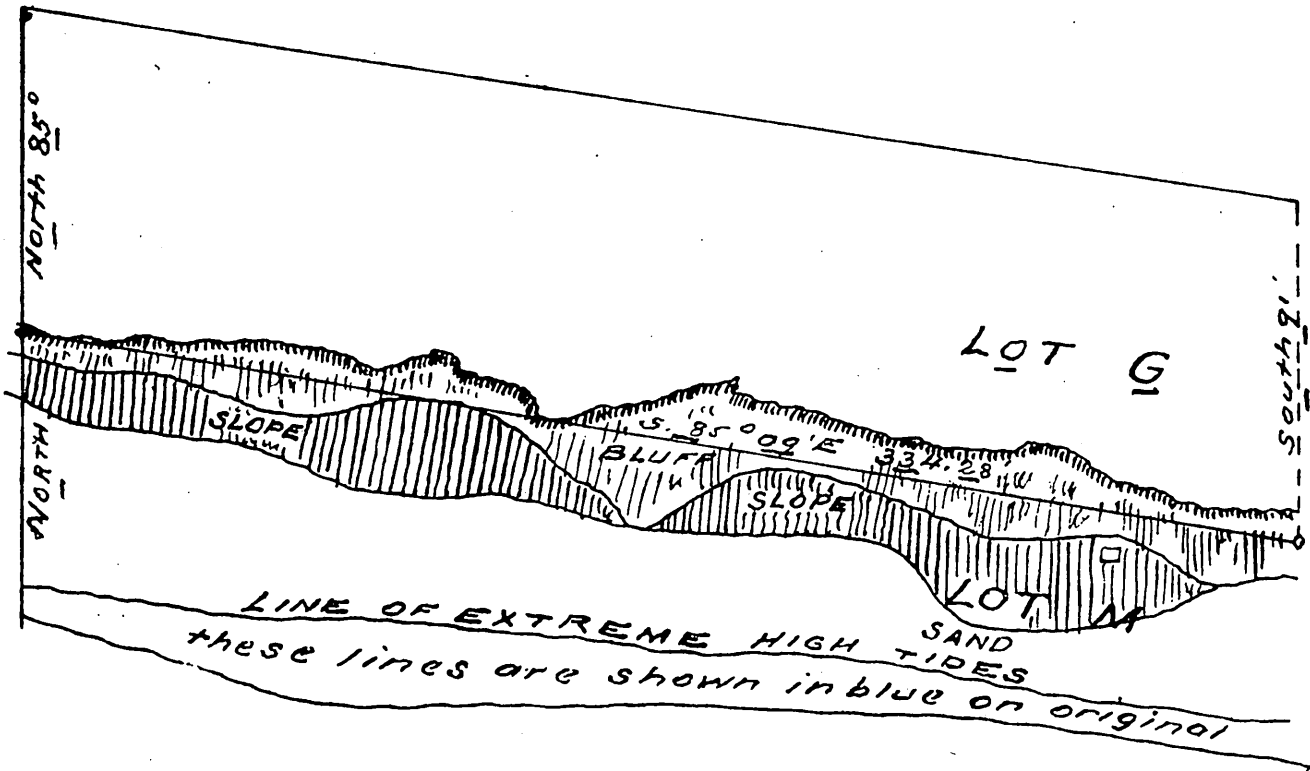
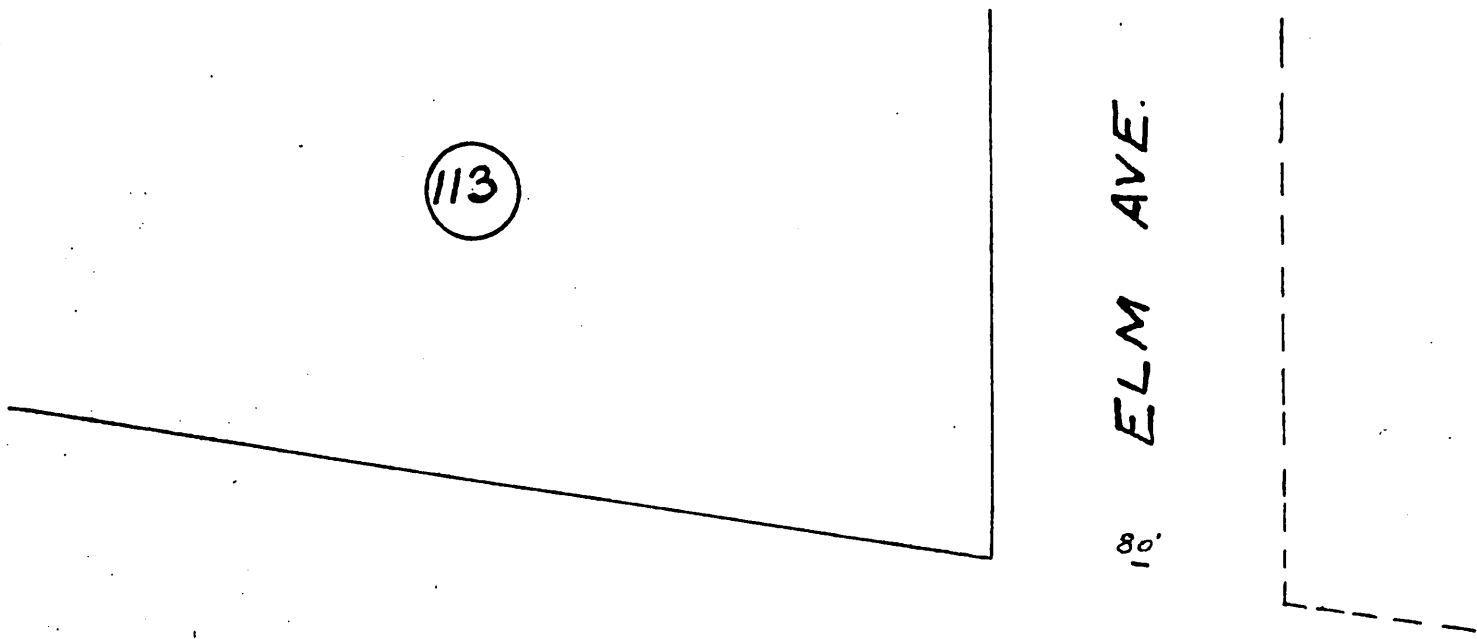
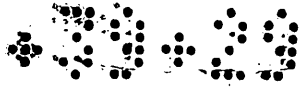
100'



Note
underlined Figures and letters
are shown in red on original

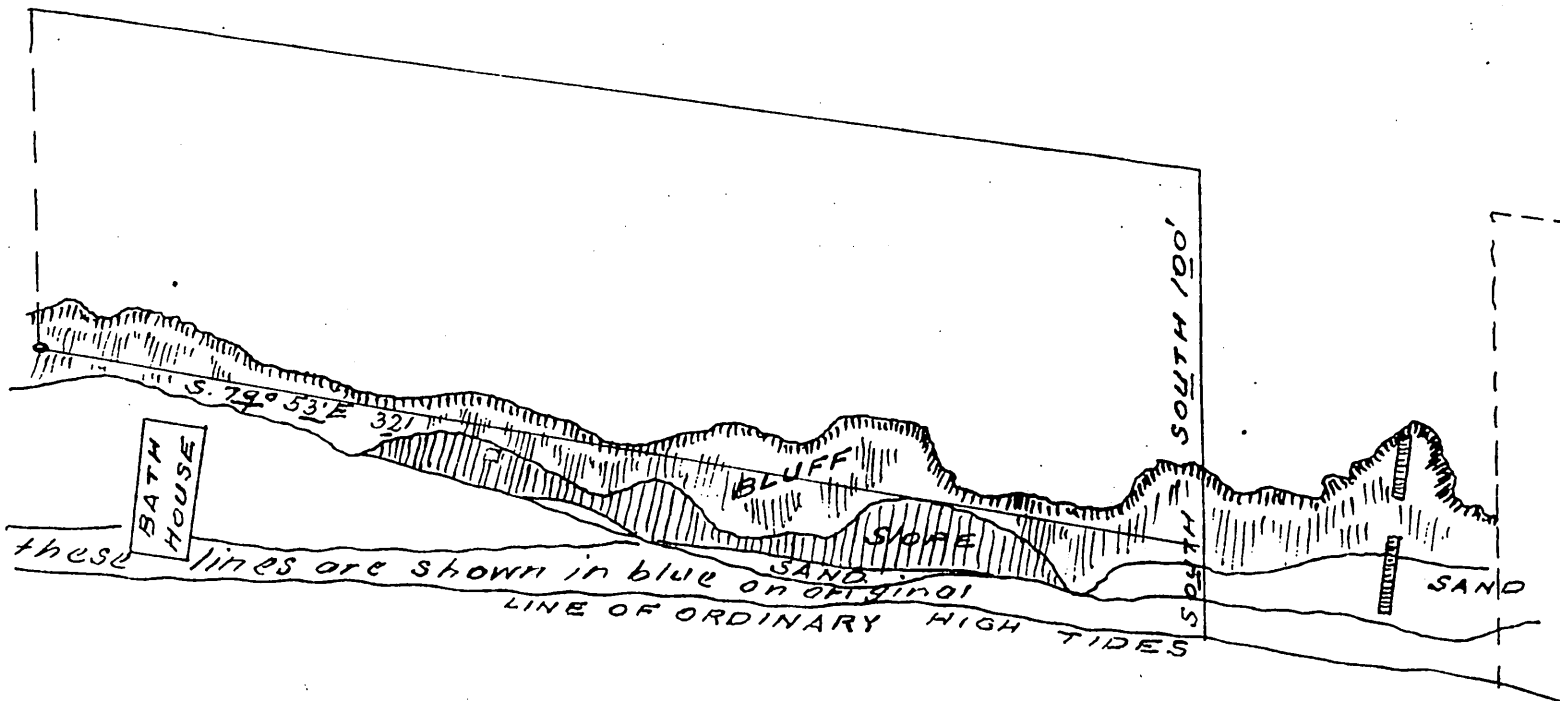
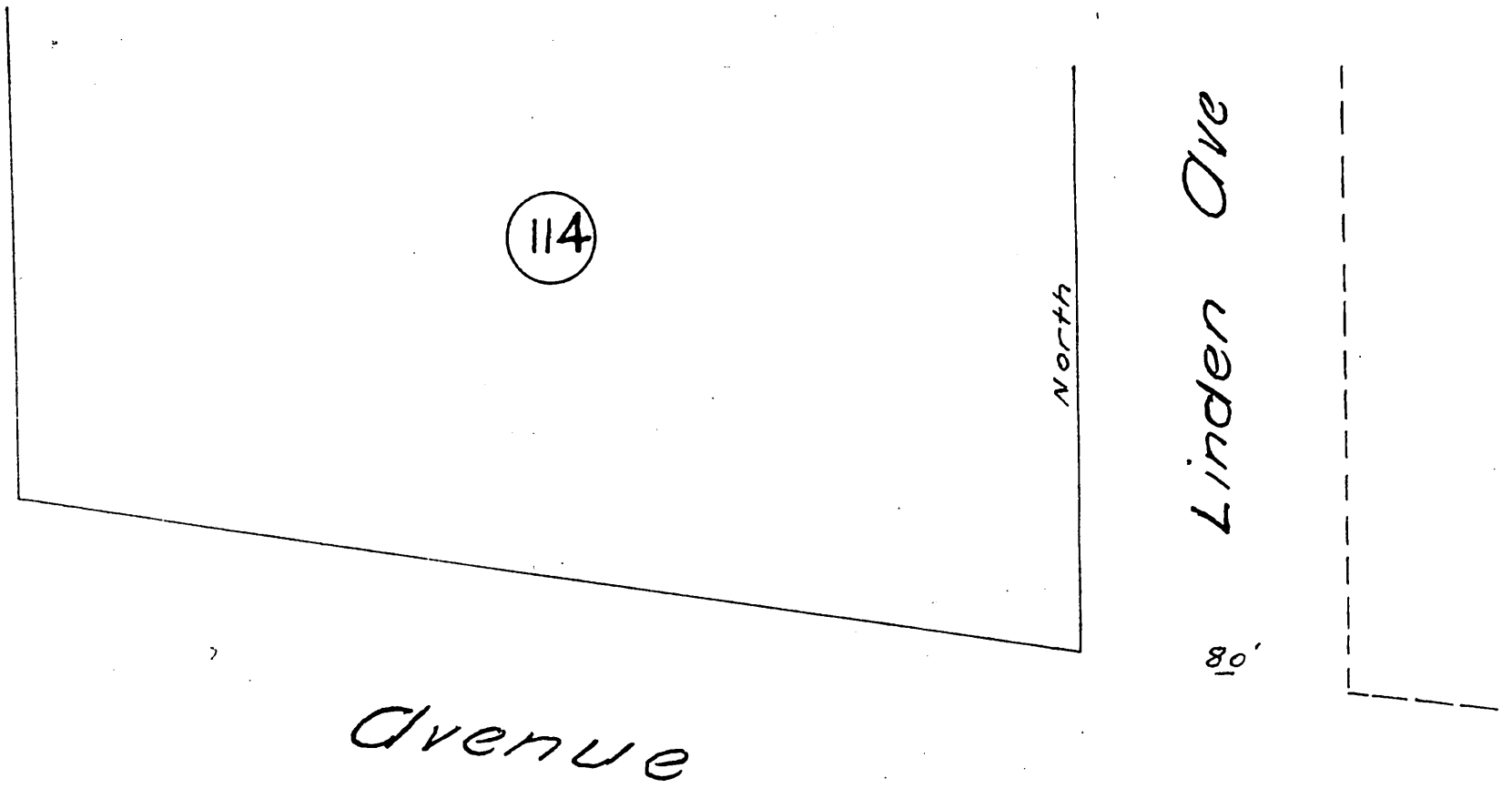


Note underlined letters and figures are shown in red on original

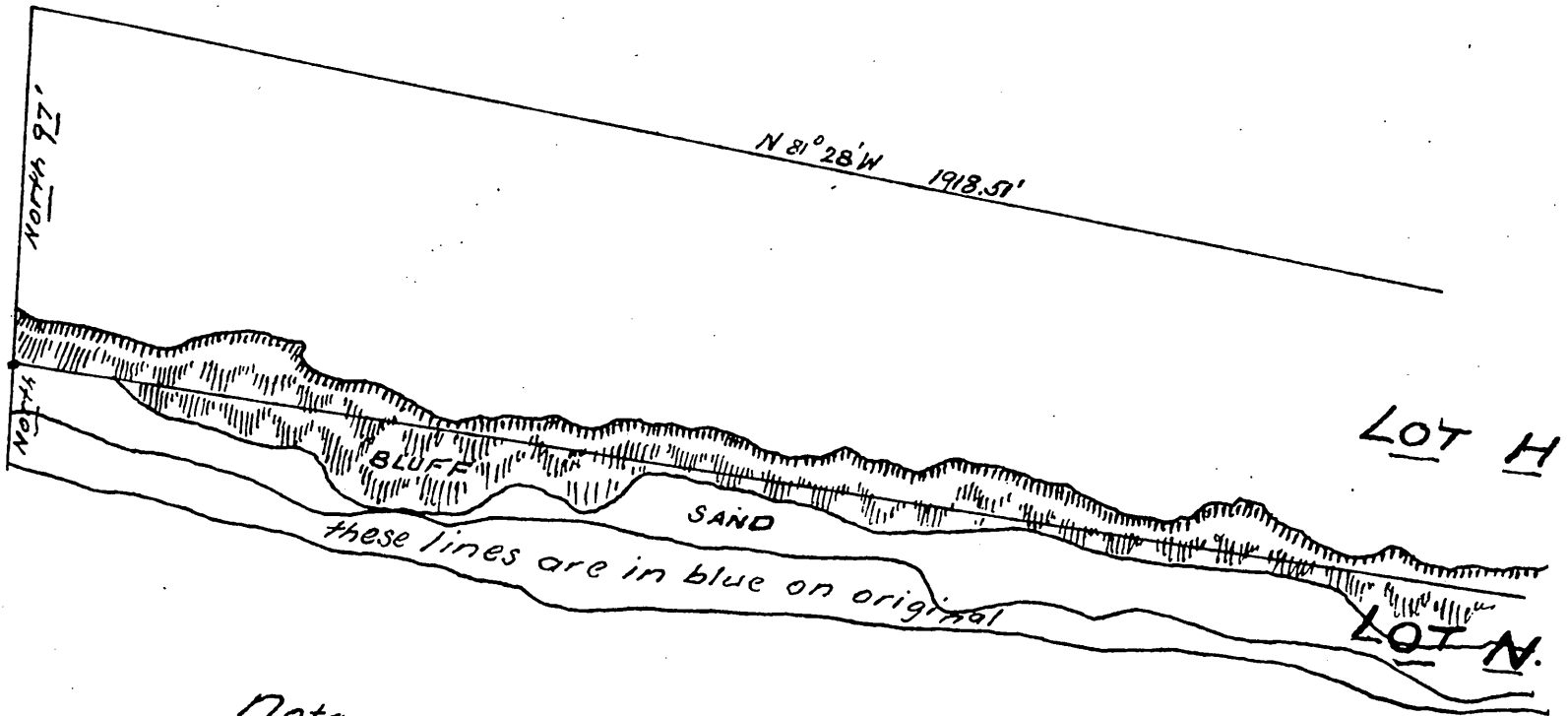
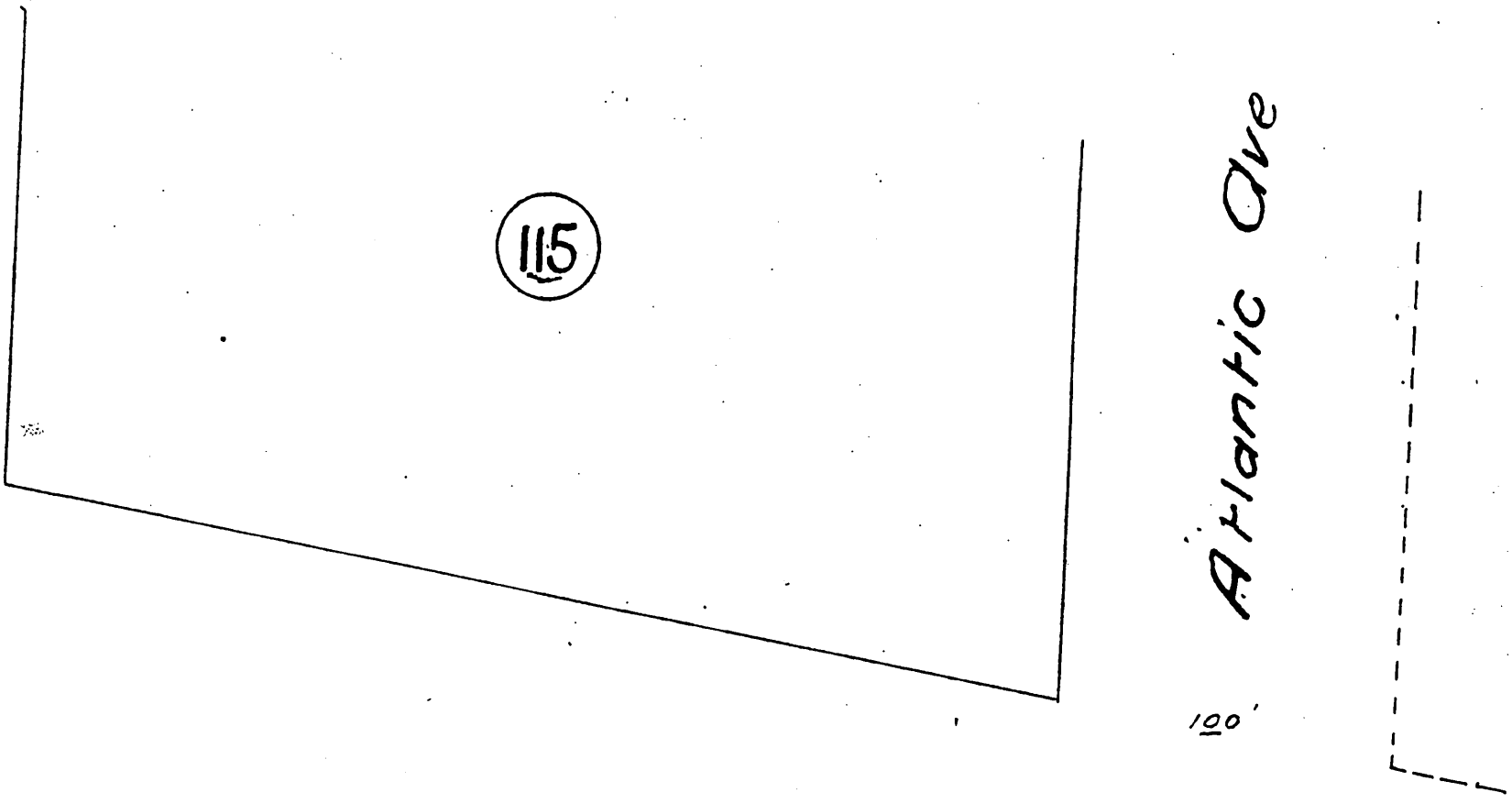


note underlined letters and figures are shown in red on original

3330



not underlined letters and figures are shown in red on original.



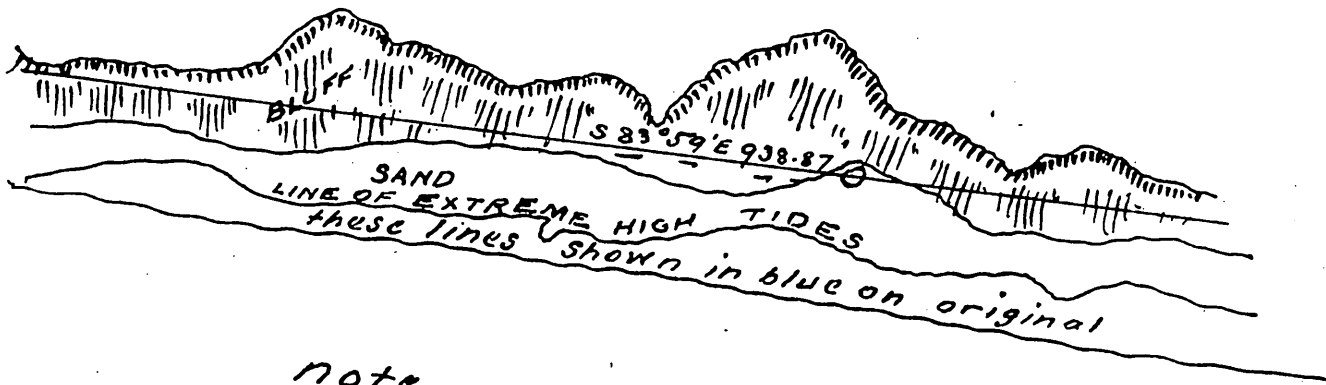
Note
underlined figures and numbers are shown
in red on original



116

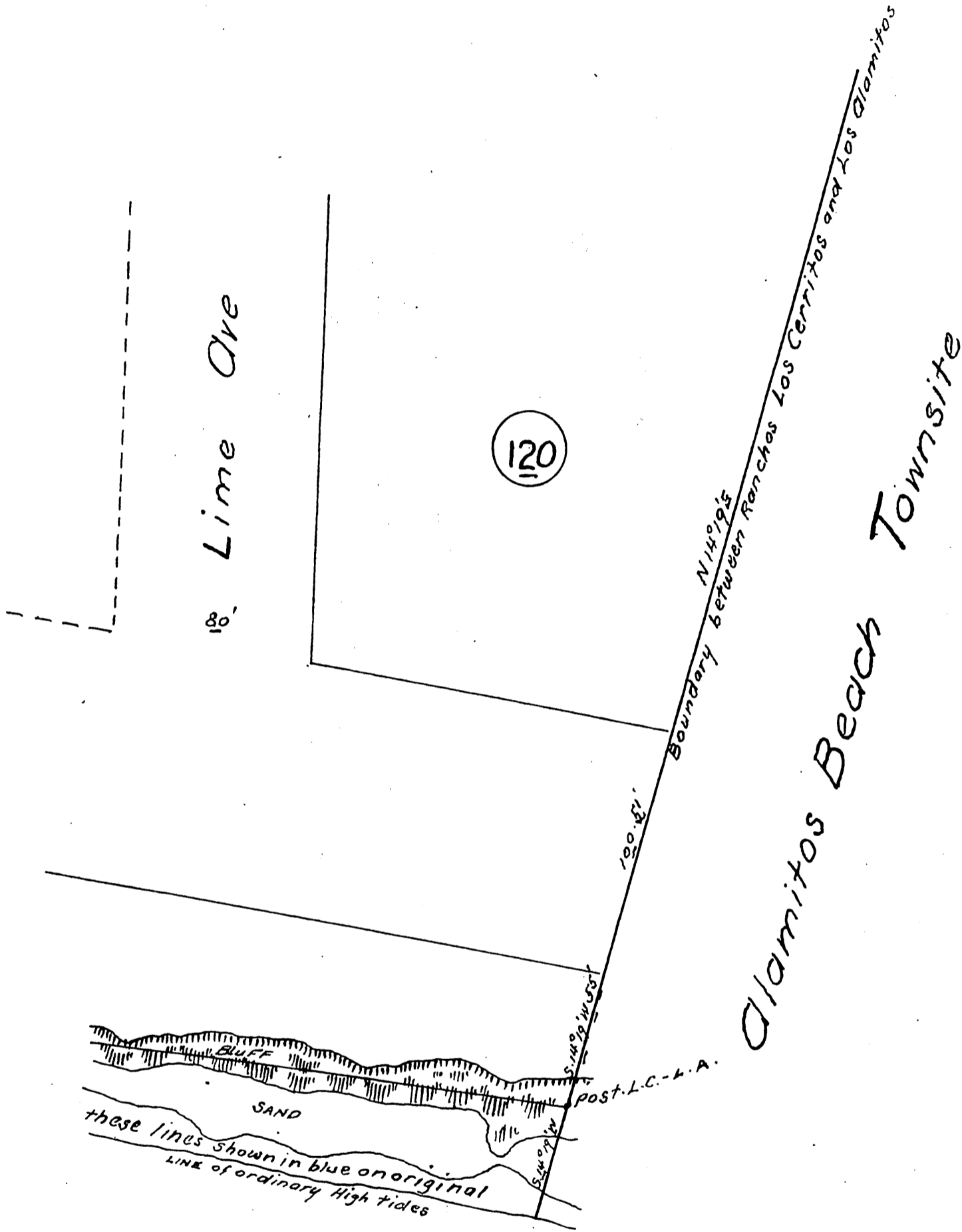
North

100'



note underlined letters and figures
are shown in red on original

39-33



A full, true and correct copy of the original
 recorded July 18 1889 at 17 min past 2 P.M.
 at request of A. E. Pomeroy
 John W. Francis County Recorder
 By George Bugbee Deputy

Note
 underlined letters and figures shown
 in red on original