

MAP
OF THE
DIVISION LINE
BETWEEN
LOS ANGELES AND ORANGE COUNTIES

AS SURVEYED IN SEPTEMBER 1889 UNDER INSTRUCTIONS FROM
THE HONORABLE BOARD OF SUPERVISORS OF LOS ANGELES
AND ORANGE COUNTIES BY S.O. WOODS COUNTY SURVEYOR
OF ORANGE CO AND E.T. WRIGHT OF LOS ANGELES CO

scale 50 chains to 1 in.

Filed
OCT 7, 1889
Chas. H. Dunsmoor Clerk
by C.W. Blake Deputy

T. 4 S. R. 12 W.

LOS ALAMITOS

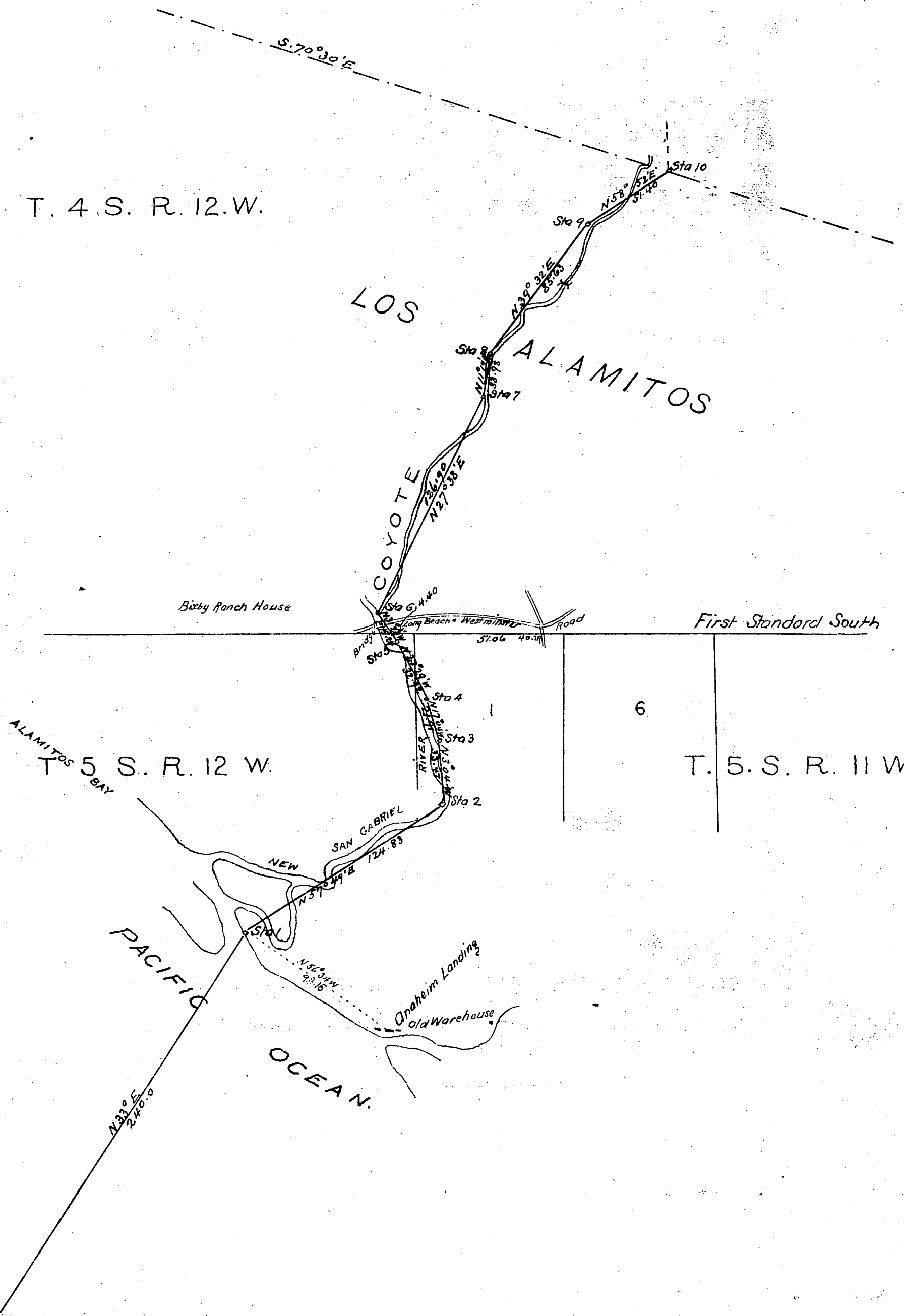
COYOTE

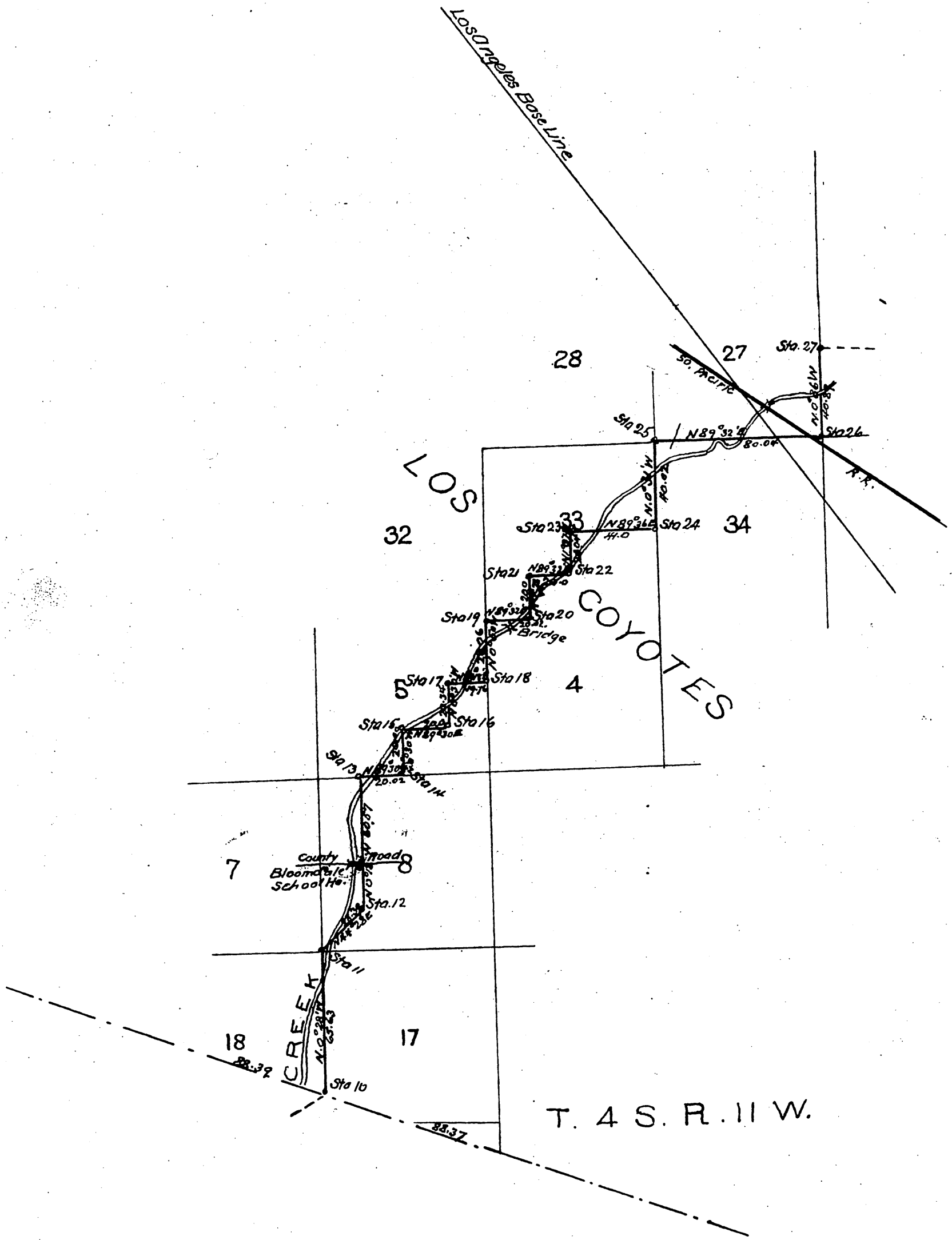
Bixby Ranch House

First Standard South

ALAMITOS BAY
T. 5 S. R. 12 W.

T. 5 S. R. 11 W.

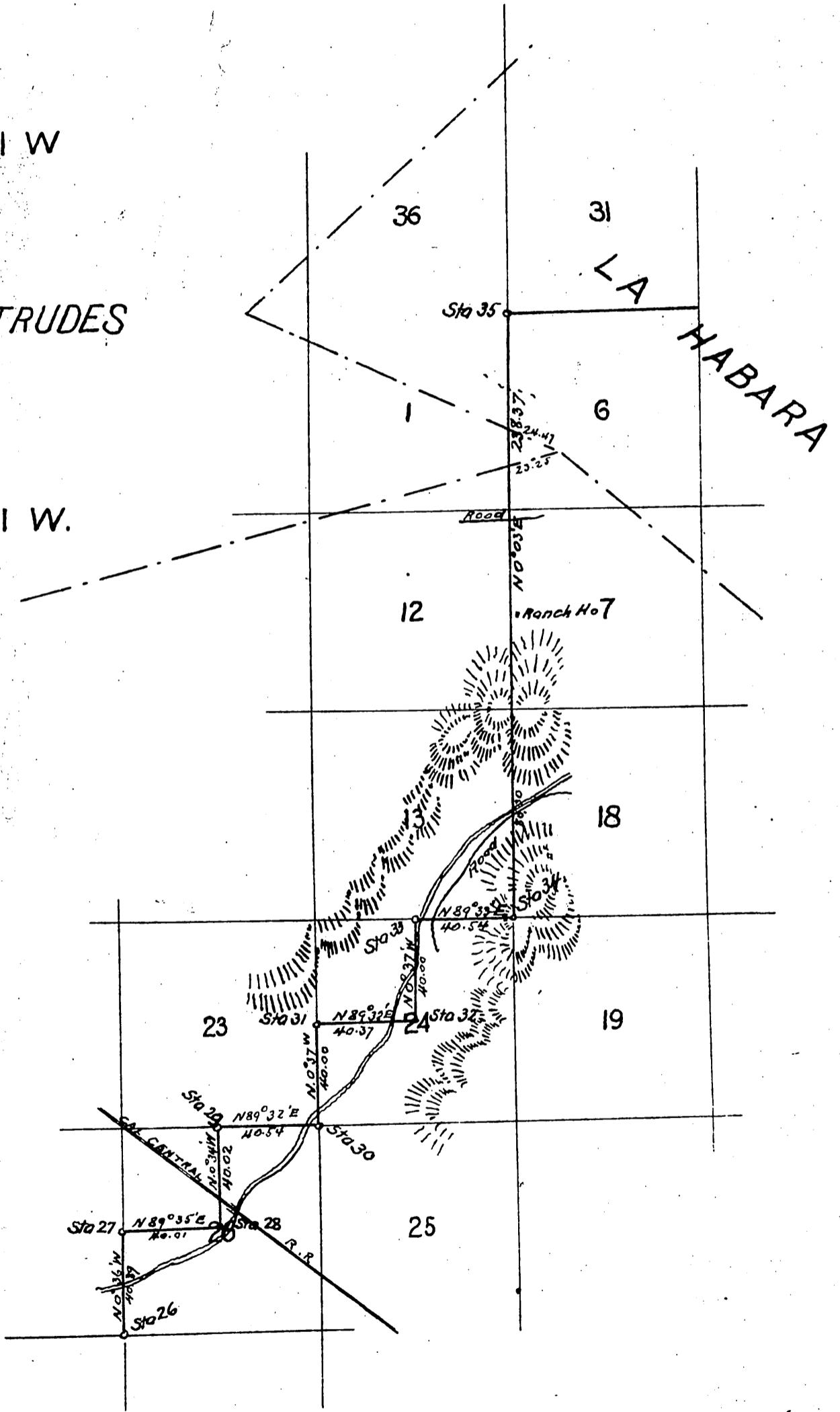


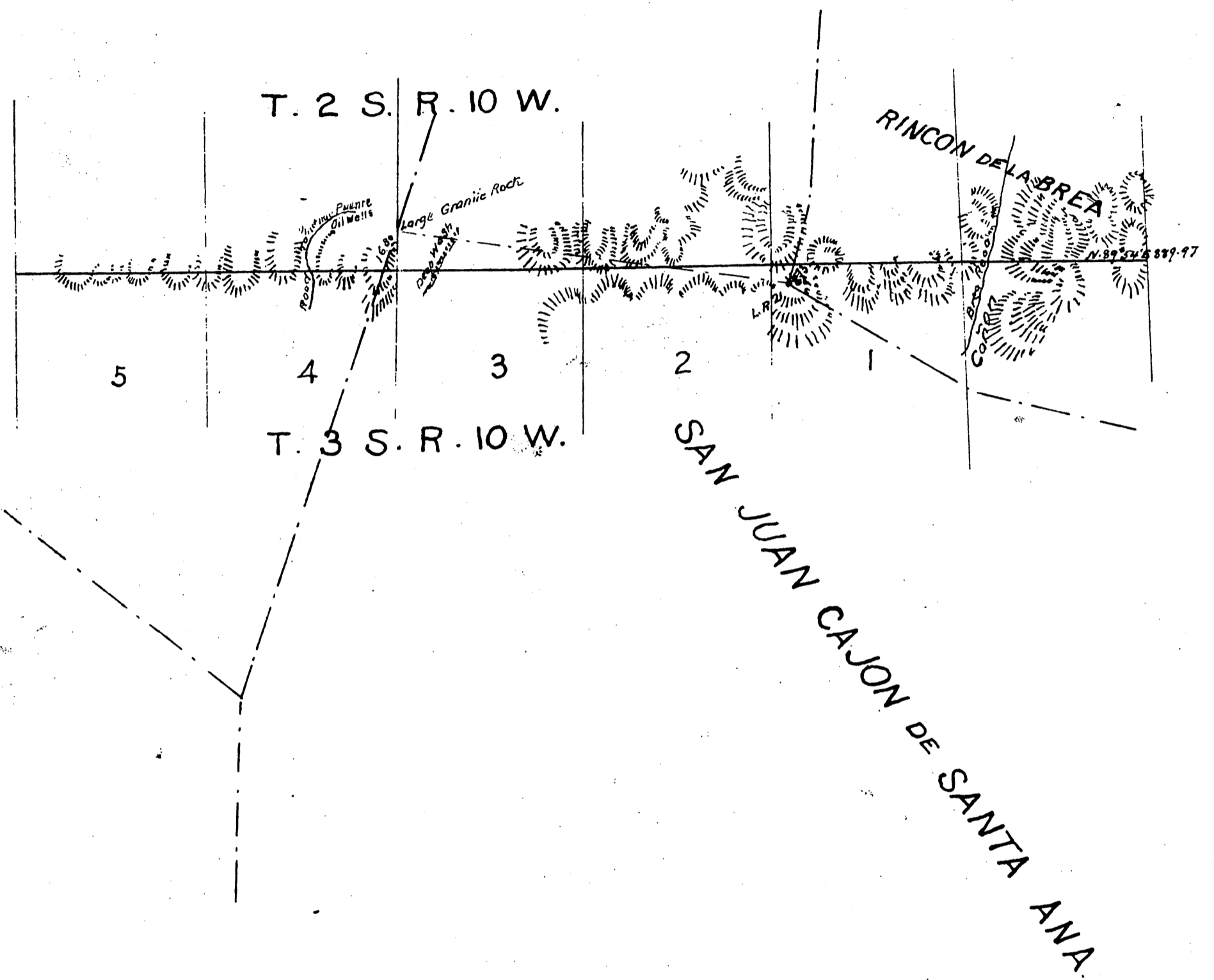


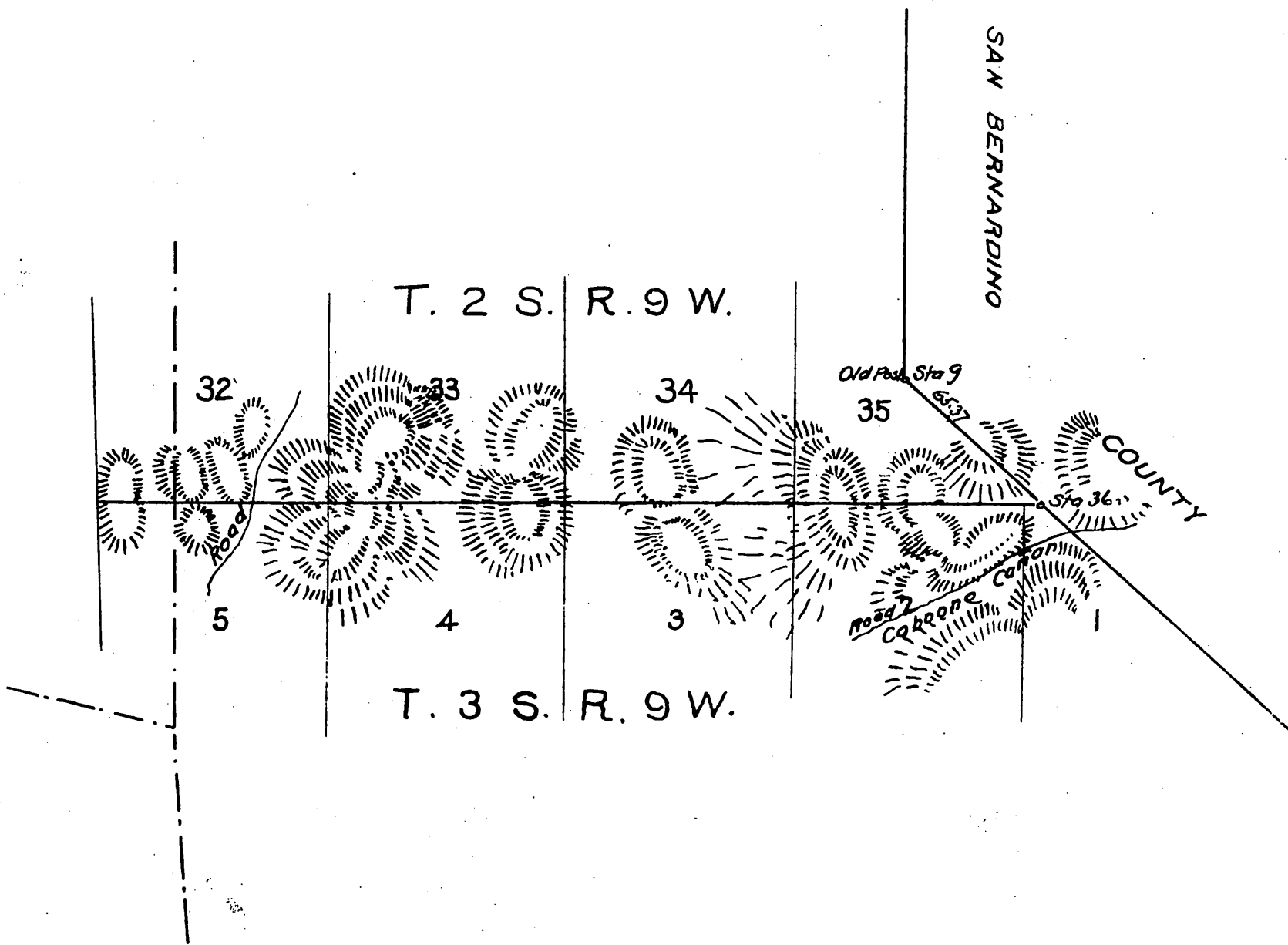
T. 2 S. R. 11 W

SANTA GERTRUDES

T. 3 S. R. 11 W.







Los Angeles Cal Oct 5th 1889

Field notes of survey of Boundary line between Los Angeles and Orange Counties
Survey made Sept 1889

Beginning at a point in the Pacific Ocean three miles South West from the mouth of the New San Gabriel River Sta 0

Thence N 33° E 240.00 chs to Sta 1 being on sand spit to East of mouth of Alamitos Bay at about high tide

Thence N 57° 49' E at 130.00 chs cross New San Gabriel River 29.00 chs cross New San Gabriel River
47.00 52.50
100.00 124.83 to Sta 2 on West bank of New

San Gabriel River and from which twin willow marked B.T. bears N 7° 04' E. 191 chains and clumps of willows nearest of which is marked B.T. bears S. 67° 28' E. 1.93 chs

Thence N 3° 04' W 17.06 chs to S. bank of River 19.06 chs to N. bank of River 27.23 chs to S. bank of River 33.47 chs to Sta. 3 on North East bank of River

N. 17° 04' W 21.91 chs to Sta 4 on East bank of River from which large willow marked B.T. bears N. 6° 37' W. 4.95 chs

Thence N. 27° 29' W. 18.03 chs to point 0.50 chs East of River 21.00 chs to Southerly bank of River 24.00 chs to N. bank of River 29.89 chs to S. bank of River 32.22 chs to North bank of River 32.92 chs to Sta. 5 on East bank of River

Thence N 31° 29' W. at 4.40 chs cross first Standard South 91.36 chs West of corner to Sections 1 and 6 Township 5 South Ranges 11 and 12 West 14.65 chs to center of Long Beach and Westminster Road 1.30 chs East of End of bridge 19.64 chs to Sta 6 on East bank of New San Gabriel River and on the South bank of the Coyote Creek

Thence following the Coyote Creek N 27° 38' E 0.70 chs to centre Coyote Creek 235 chs enter Coyote Creek 6.60 chs leave Coyote Creek 8.25 chs centre Coyote Creek 28.40 . . .

. . . 39.92 . . . to point 0.40 chs East of Creek from which blazed willow bears S: 60° 49' W. 0.26 chs and blazed willow bears N. 62° 04' W 0.26 chs 80.00 chs to point 5.50 chs East of Creek 109.59 chs to point from which blazed willow bears N. 41° 04' E 1.83 chs 110.50 chs center of Creek 126.00 center of Creek 126.90 to Sta 7.00 North East bank of Creek at bend

ce N 11° 19' E along East bank of Creek 33.98 chs to Sta 8

N 39° 32' E 24.00 chs to center of Creek 29.75 chs to center of Creek 32.00 chs to center of Creek 40.00 chs to point 60.00 chs West of Creek 53.00 chs center of old Road 62.30 chs center of Old Road 85.63 chains to Sta 9 on West bank of Creek



- Thence N 58°52'E 100 chs enter Creek 9.92 chs leave Creek 18.07 chs centre Creek 51.40 chs to Sta 10 being on the line between the Ro Los Alamos and the Ro Los Coyotes and 13.89 chs East of Creek and on line between Sections 17 & 18 Township 4 South Range 11 West
- Thence N 0°28'W on line between said Sections 17 & 18 51.43 chs centre of Creek 65.63 chs to the corner of Sections 7-8-17 and 18 T. 4 S. R. 11 W being Sta 11, being 235 chs West of Creek and from which a witness stake bears E. 265 chs
- Thence N 44°28'E 2.70 chs centre of Creek 28.39 chs to the North East corner of the SW 1/4 of the SW 1/4 of Sec 8 T. 4 S. R. 11 W Sta 12 being 7.71 chs East of Creek
- Thence N 0°18'W 2002 chs to centre of County Road on 1/4 Section line running East 8 West through Sect 8 58.70 centre of Creek 60.67 to Sta 13 being the N E corner of the N W 1/4 of N W 1/4 of said Section 8
- Thence N 89°30'E along Section line between Sections 5 and 8 T. 4 S. R. 11 W 1.90 chs centre of Creek 20.02 chs to Sta 14 being the 1/4 Section corner to said Sections 5 and 8
- Thence N 0°30'W 20.00 chains to Sta 15 being N E cor of SE 1/4 of SW 1/4 Section 5 T. 4 S. R. 11 W and 2.50 South of Creek
- Thence N 89°30'E 20.00 chs to Sta 16 being the N E cor of SW 1/4 of SE 1/4 said Section 5
- Thence N 0°30'W 12.50 chs to center of Creek 20.34 chs to Sta 17 being the N E cor of N W 1/4 of SE 1/4 said Section 5
- Thence N 89°18'E 5.50 chs to center of Creek 19.76 chs to Sta 18 being 1/4 Section cor to Sections 4 and 5 being in T. 4 S. R. 11 W
- Thence N 0°56'W on Section line between said Sections 4 and 5 21.85 to center of Creek 28.06 to Sta 19 being cor to Sections 4 and 5 T. 4 S. R. 11 W and on Township line between Townships 3 & 4 South
- Thence N 89°32'E along said Township line 1205 chs to W bank of Creek 17.50 chs to E bank of Creek 2002 chs to Sta 20 being S E cor of SW 1/4 of SW 1/4 of Section 33 T. 3 S. R. 11 W
- Thence N 0°28'W 2.90 chs to South bank of Creek 625 chs to North bank of Creek 2000 chs to Sta 21 being N E cor of SW 1/4 of SW 1/4 of said Section 33
- Thence N 89°32'E 10.00 chs to point 2.50 chs North of Creek 13.40 chs to W bank of Creek 16.25 chs to East bank of Creek 20.00 to Sta 23 being N E corner of S E 1/4 of SW 1/4 said Section 33
- Thence N 1°07'W 4.00 chs to South bank of Creek 625 chs to North bank of Creek 20.04 chs to Sta 23 being center of said Section 33 and from which point a blazed blue gum tree bears S. 31°15'W. 0.40 chs and another bears N 21°07'W 0.48 chs
- Thence N 89°36'E 5.80 chs to West bank of Creek 9.25 chs to East bank of Creek 20.00 chs to point 12.00 South of Creek 41.00 to Sta 24 being 1/4 Sect cor to Sects 33 & 34 T. 3 S. R. 11 W
- Thence N 0°31'W on line between said Sections 33 and 34 20.00 to point 7.50 chs East of Creek 28.00 chs to center of Creek 40.2 to Sta 25 being cor to Sects 27-28-33 & 34 T. 3 S. R. 11 W.
- Thence N 89°33'E on line between said Sections 27 and 34 9.50 chs cross small Creek branch of Coyote 35.00 chs cross small creek branch of Coyote 45.75 chs center of Coyote Creek 58.05 chs cross the Los Angeles Base Line Coy. Geodetic Survey the course of which is N 37°26'W 76.42 chs center of Southern Pacific R. Rd course N. 57°04'W 80.04 chs to Station 26 being corner to Sections 26-27-34 and 35 T. 3 S. R. 11 W
- Thence N 0°26'W on line between Sections 26 and 27 22.10 chs to center Coyote Creek 40.89 chs to Sta 27 being 1/4 corner to said Sections 26 and 27
- Thence N 89°35'E 40.01 to Sta 28 being center of said Section 26 being 0.50 chs West of Coyote Creek and from which point blazed willow bears S. E 0.15 chs
- Thence N 0°34'W 9.90 chs to center of California Central R. Rd course N 55°55'W 29.70 cross small Cañon 40.02 chs to Sta 29 being 1/4 Section corner to Sections 26 and 23 T. 3 S. R. 11 W
- Thence N 89°32'E on line between said Sections 26 and 23 13.80 chs top of bluff 33.90 chs center Coyote Creek 40.54 chs to Sta 30 being cor to Sections 23-24-25 and 26 T. 3 S. R. 11 W
- Thence N 0°37'W on line between said Sections 24 and 23 8.00 chs to center Coyote Creek 31.00 chs to center small Creek 35.00 chs to center small Creek 40.00 chs to Sta 31 being 1/4 corner to said Sections 24 and 23
- Thence N 89°32'E 31.00 chs to center Coyote Creek 40.37 chs to Sta 32 being center of said Section 24 N 0°37'W 39.50 to center Coyote Creek 40.00 chs to Sta 33 being 1/4 corner to Sections 24 and 13 T. 3 S. R. 11 W
- Thence N 89°33'E 40.54 to Sta 34 being N E corner of Section 24 and also being on Range line between Ranges 10 and 11 W This Station is located on West slope of high hill near the top
- Thence N 0°03'E on Township line between Ranges 10 and 11 W 506 chs to brow of hill above described 40.00 chs to Coyote Creek 50.00 chs enter rolling hills 80.30 chs to cor to Sections 7-12-13 and 18 T. 3 S. Ranges 10 and 11 West 118.00 leave rolling hills enter level land 157.84 chs cross road course East and West 177.40 chs cross line between Ro Los Coyotes and Ro Santa Gertrudes 193.18 chs cross line between Ro Santa Gertrudes and Ro La Habra 205.00 chs center Whittier and Santa Ana Road 238.37 to Sta 35 being the corner to Townships 2 and 3 South, and Ranges 10 and 11 W.
- Thence N 89°34'E on Township line between Townships 2 & 3 South 9.00 chs cross small wash course South 44.60 chs cross deep wash, course SE 55.00 chs cross deep wash course S 71.00 chs cross deep wash course S. 86.21 chs to West bank deep canon 92.00 chs to bottom of Canon course S 107.28 chs to top of ridge course S 112.00 chs to bottom of Canon course S. 117.10 chs to top of Ridge course S 120.00 chs to bottom of Canon course S. 123.00 chs to top of Ridge course S. 125.00 chs to bottom of Canon, course S. 130.28 chs to top of Ridge course S. 135.25 chs to bottom of hill-enter level 140.25 chs to bottom of hill leave level 143.63 chs to top of Ridge course South 151.00 chs to bottom of Canon course South 153.00 chs to top of Ridge course S. 163.00 chs to bottom of Canon course S 173.34 chs to top of Ridge course South 180.00 chs to bottom of Canon course South 188.70 chs to top of Ridge course S 196.00 chs to bottom of Canon, course S. 200.52 chs to top of Ridge course S. 205.05 chs to bottom of Canon, course S. 210.30 chs to top of Ridge course S. 220.00 chs to bottom of Canon, course S 228.00 chs to top of Ridge course S 232.97 chs cross line between Ro La Habra and Ro San Juan Cañon de Santa Ana 234.03 chs to top of Ridge course South 240.00 chs to bottom of hill, enter rolling land 256.00 cross deep wash course S. E. 303.00 chs to top of Ridge course S 325.40 chs cross wire fence in La Puente course N 325.73 chs to top of hill at mouth of small Canon 356.00 chs on point of spur course South 359.80 chs on point of spur course South 365.28 chs to foot of hill enter level land thence.

up Canon 392.78 chs to bottom of hill 398.22 chs to top of spur, course South 407.59 chs cross line between Ro La Puente and Ro Rincon de La Brea 418.21 chs to point about half way up the South slope of high sugar loaf peak which point overlooks the Canada de La Brea 466.92 chs to top of low hill to West of Canada de La Brea 480.21 chs to top of spur to West of Canada de La Brea 490.99 chs to point 0.72 chs East of the Anaheim and Spadra Road in bottom of the Canada de La Brea, Monument on line 545.47 to point on top of high ridge course South 563.70 chs to point top of high ridge course South 590.44 chs to point top of spur course S.E. 615.27 chs to point South of Wagon Road bottom of large Canon, from which point double live oak bears about North 0.88 chs monument on line 707.78 chs to point on top of high mountain 761.12 chs to point on top of high ridge course S.E. 818.36 chs to point top of spur on high mountain course S.E. 855.99 chs to point on high ridge course S.E. thence following small Canon 875.19 chs to point on ridge to South of small canon and to West of large canon course S.E. 889.97 chs to Sta 36 being at intersection of Township line between Townships 2 and 3 South and the boundary line between Los Angeles County and San Bernardino County from which point Station 9 of said survey bears N 48° 34' W 65.37 chs and Sta 36 also being in bottom of deep Canon on East side of wagon road and from which creek in Cabone Canon bears S.E. 7.50 chs

S.O. Wood County Surveyor Orange County
E.T. Wright for Los Angeles County

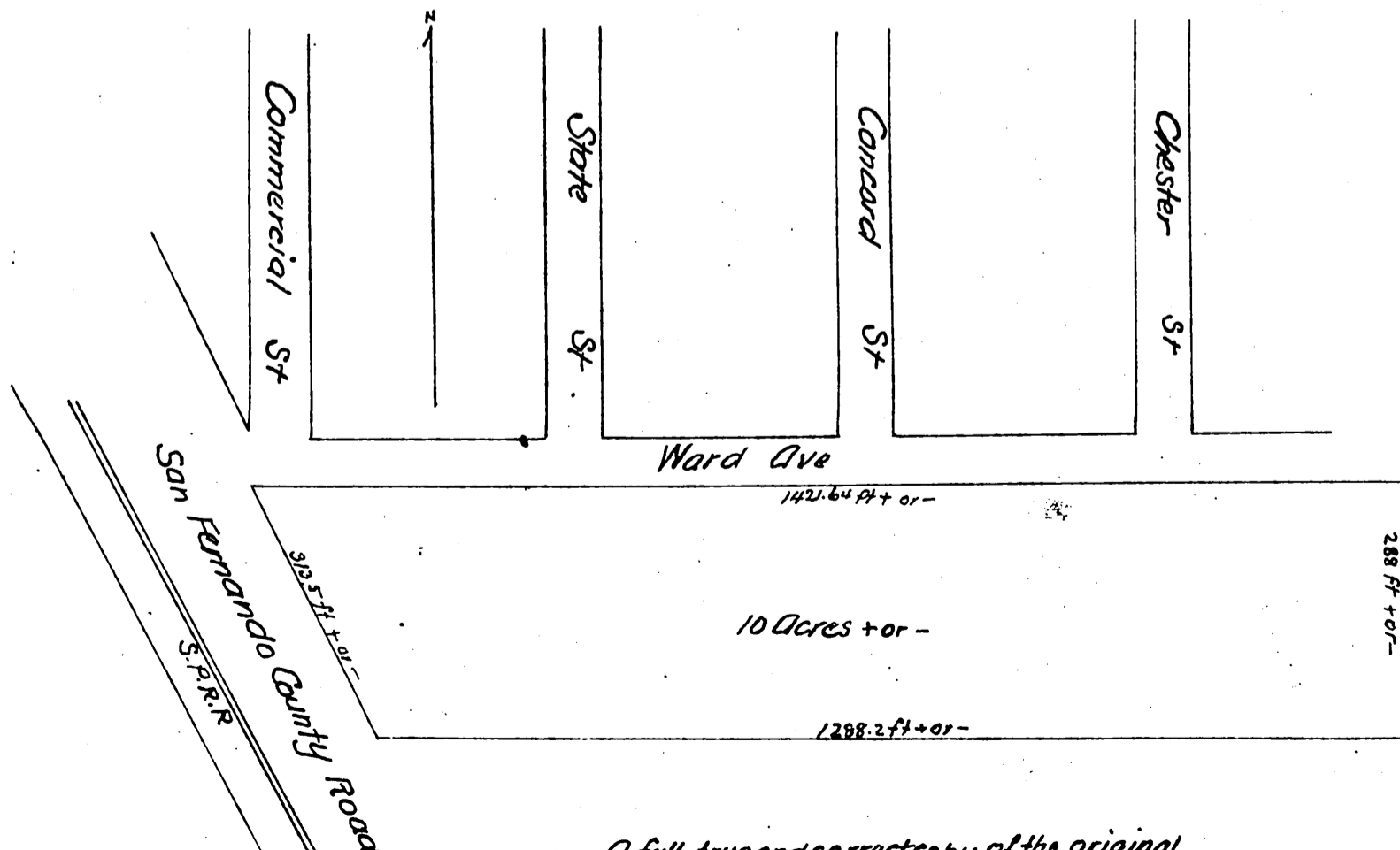
A full, true and correct copy of the original recorded January 4, 1890 at 58 min past 3 P.M. at request of County Clerk

John W. Francis County Recorder
By George Bugbee Deputy.

PLAN
OF
Land in West Glendale

owned by Adelia McCallender
being the North half of Lot 4 Hahn Subdivision
of Rancho San Rafael

March 1890



A full, true and correct copy of the original recorded April 4, 1890 at 54 min past 10 a.m. at request of Mrs A.M. Callender
John W. Francis County Recorder
By George Bugbee Deputy.