



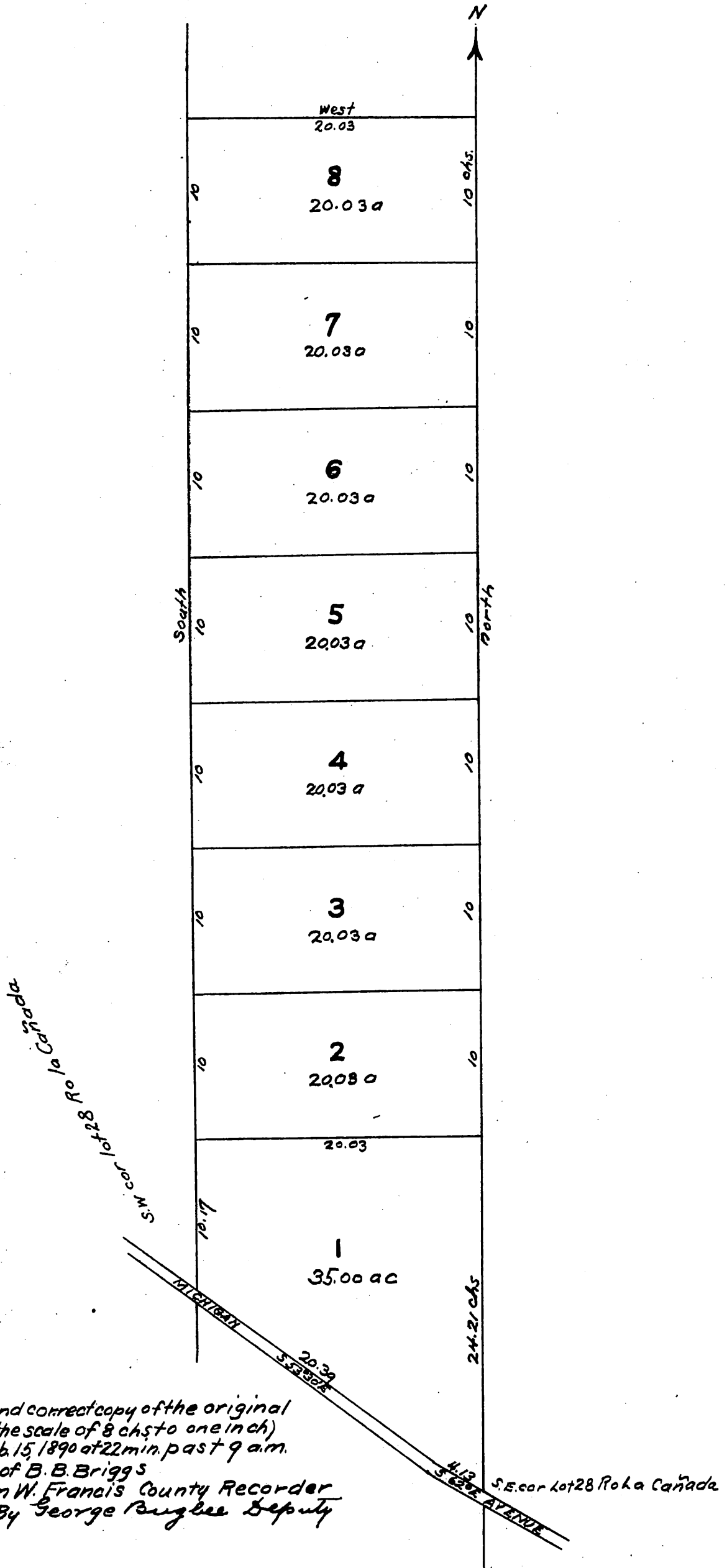
Earl Tract

a subdivision of 175 acres in Southern portion of

Lot 28 Rancho La Canada

Surveyed in June 1884 by E.T. Wright

Scale 5 chains to one inch



A full, true and correct copy of the original
(reduced to the scale of 8 chs to one inch)
recorded Feb. 15, 1890 at 22 min. past 9 a.m.
at request of B. B. Briggs

John W. Francis County Recorder
By George Buzbee Deputy