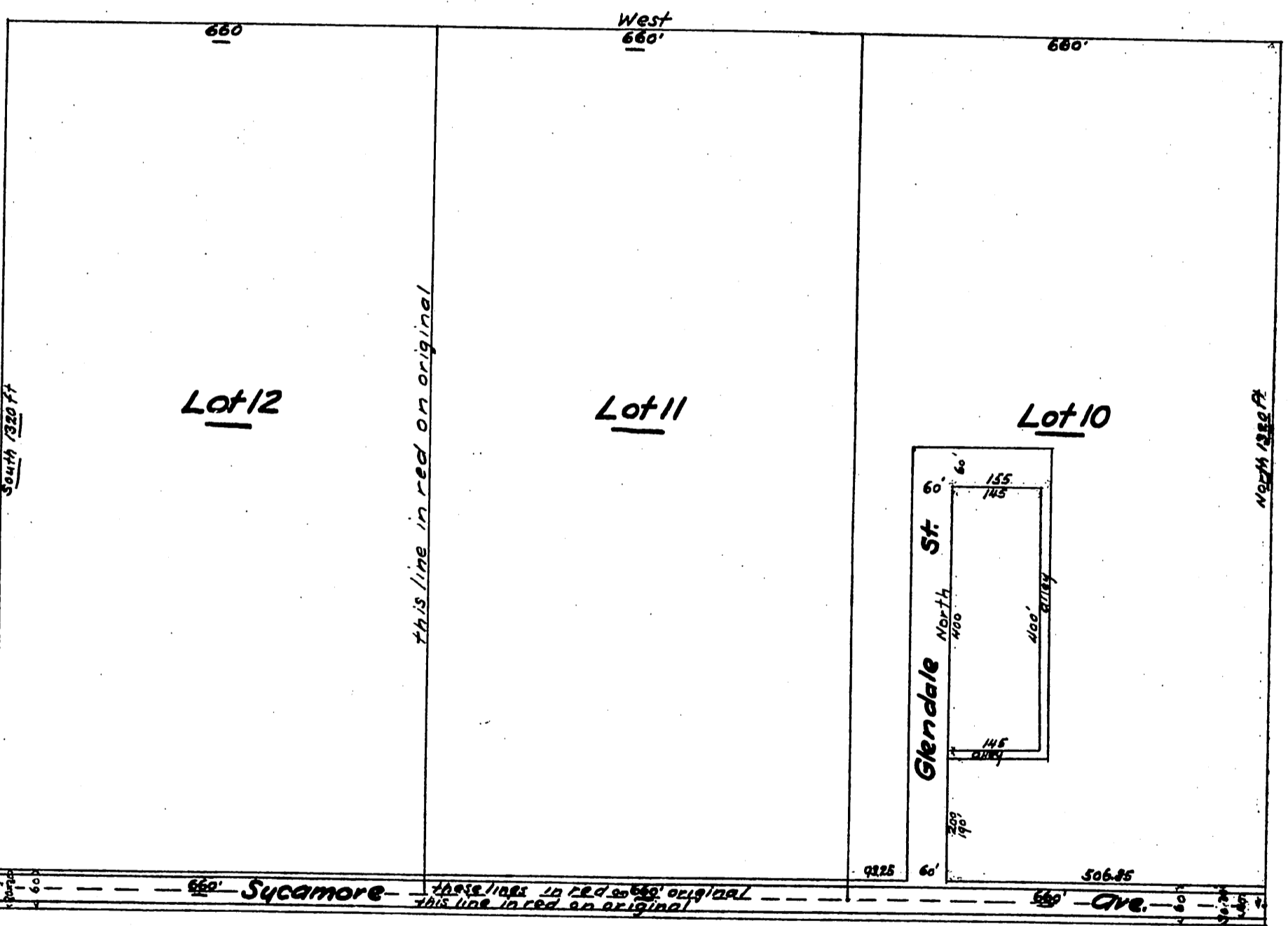


3954

PLAT
OF
Ward Bros and John Lightfoots Resurvey of Lots 10, 11 & 12
of S.C. Hahmes Sub of a part of Rancho San Rafael
Los Angeles County Cal.

Scale 200ft to one inch



Note

Red lines and figures indicate boundaries and dimensions of lots 10, 11 and 12 of S.C. Hahmes Sub of a part of Rancho San Rafael as recorded in Book 5 Page 314 of Miscellaneous Records, Records of Los Angeles County Cal.

note underlined figures are shown in red on original

A full true and correct copy of the original recorded Feb. 21, 1890 at 24 min. past 3 P.M. at request of Ward Bros and John Lightfoot
John W. Francis County Recorder
By George Bugbee Deputy.