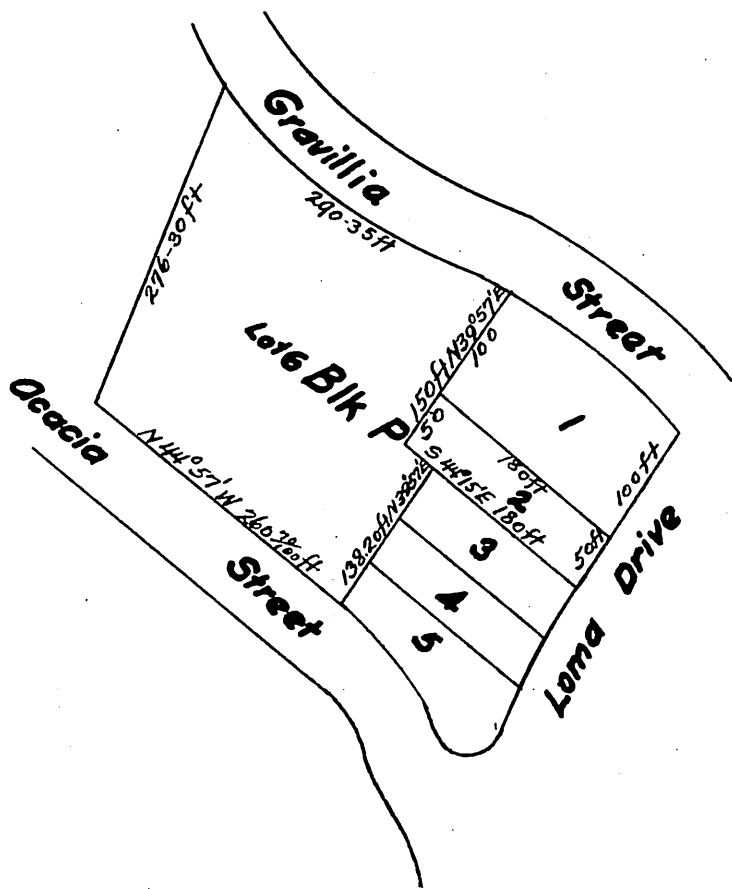


**MAP**  
*of the Resubdivision of*  
**Mitchell's Subdivision**  
*of Block Ref Colina Park*  
*in the*  
**City of Los Angeles**  
**Cal.**  
*Subdivided 5<sup>th</sup> Feb. 1890 John Goldsworthy Surveyor*  
*Scale 50 feet linch*



*A full, true and correct copy of the original  
(reduced to the scale of 150 feet to one inch)  
recorded Feb. 25, 1890 at 41 min. past 3 P.M.  
at request of A Mitchell.  
John W. Francis County Recorder  
By George Burgee Deputy.*