

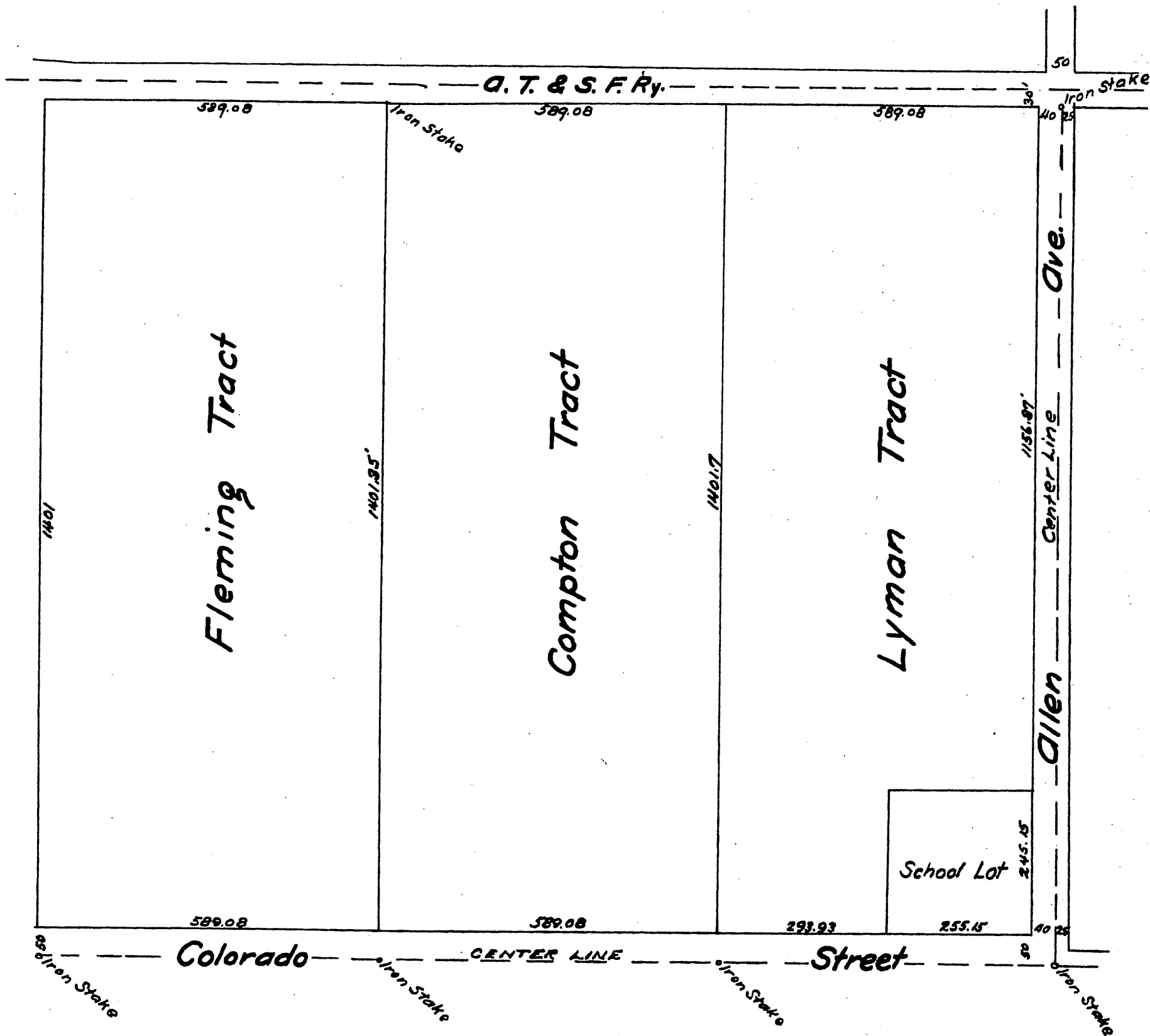
# MAP

OF

## The Fleming, Compton & Lyman Tracts

situated on Colorado Street Extension of Pasadena, Los Angeles Co., State of California being a portion of Rancho San Pasqual and Santa Anita

For the Field Notes as surveyed by C.S. Compton in December 1887 see Book 29, Page 4 of Miscellaneous Records of Los Angeles County State of California.



A full, true and correct copy of the original  
(reduced to the scale of 200 feet to one inch)  
recorded Feb. 25 1890 at 1 min. past 4 PM  
at request of C.S. Compton  
John W. Francis County Recorder  
By George Bugbee Deputy