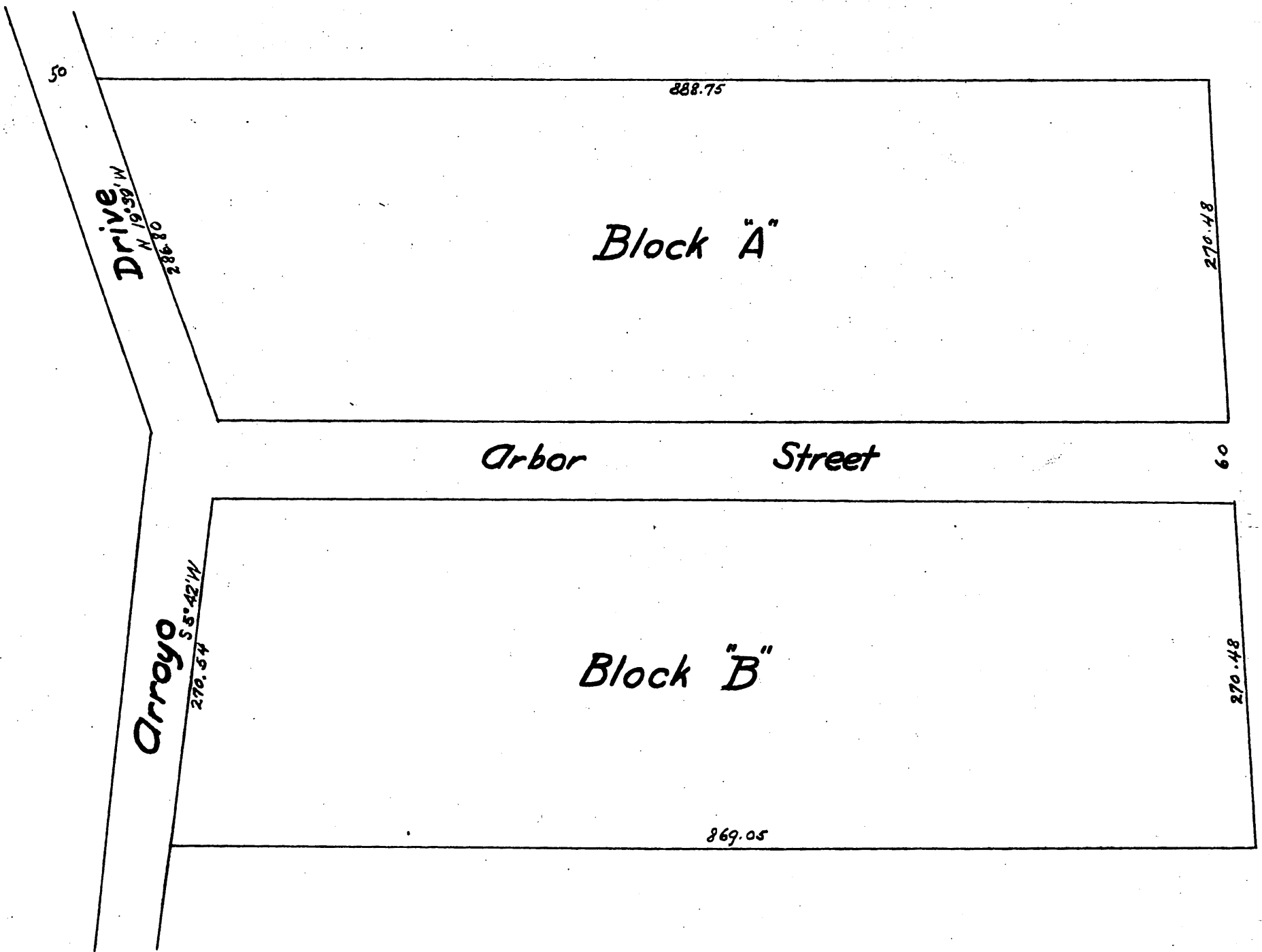




Re-plat
of Lots 15 to 34 both inclusive of
I. M. Hill's Subdivision
Pasadena Los Angeles Co, California

Ben Hahn Draughtsman
Scale 80 feet to the inch



A full true and correct copy of the original
(reduced to the Scale of 100 feet to one inch)
recorded Feb. 27, 1890 at 18 min past 1 P.M.
at request of Melcalfe & McLachlan
John W. Francis County Recorder
By George Bugher Deputy