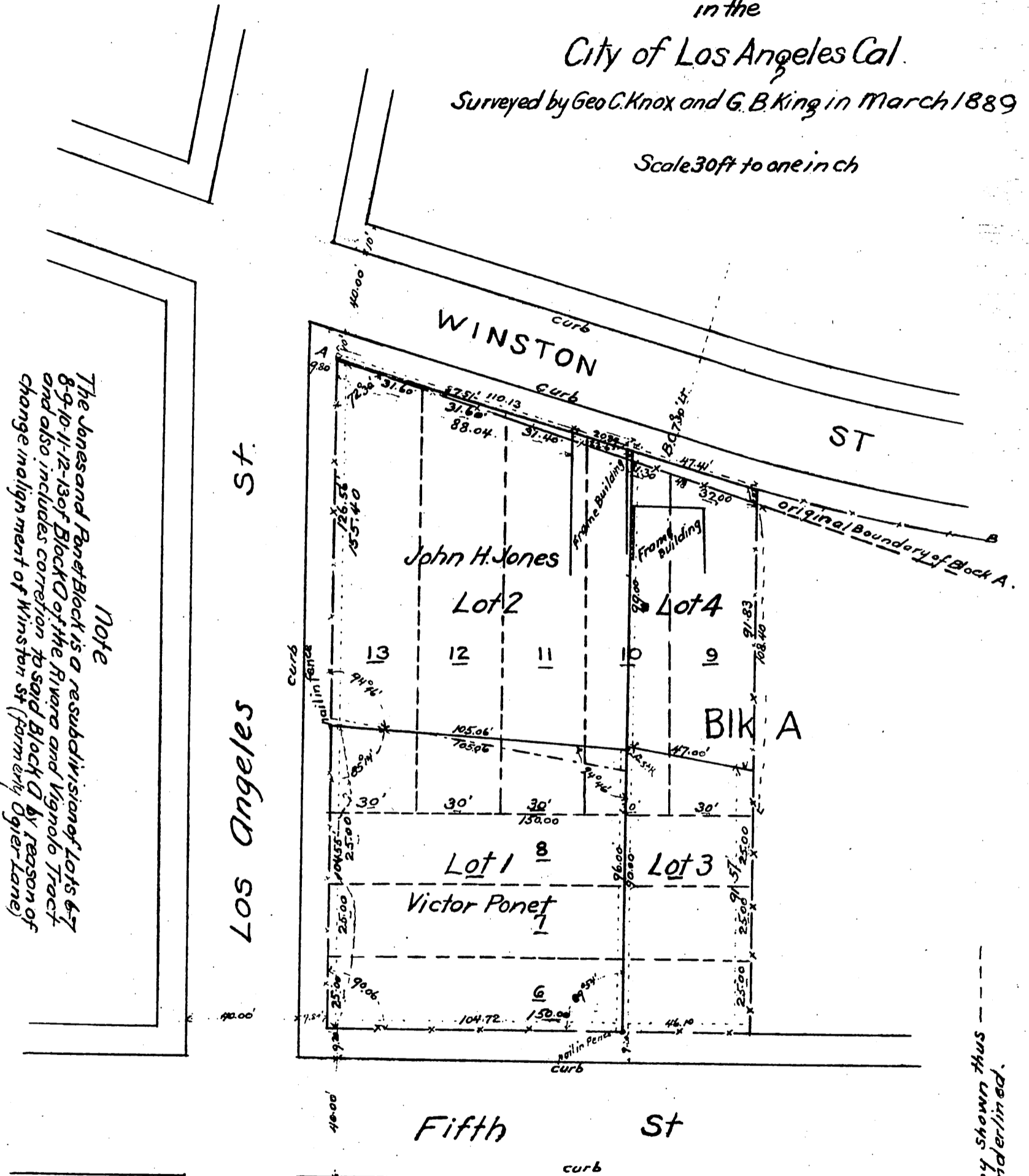


Plat of the JONES AND PONET BLOCK

in the
City of Los Angeles Cal.

Surveyed by Geo C. Knox and G. B. King in March 1889

Scale 30ft to one inch



Note
 The Jones and Ponet Block is a resubdivision of Lots 6-7
 8-9-10-11-12-13 of Block Q of the Riviera and Vignolo Tract
 and also includes correction to said Block Q by reason of
 change in alignment of Winston St. (formerly Ogier Lane)

- Conventional Signs**
- Fences — x — x — x — x —
 - Frame buildings — □
 - Red lines and figures Original Subdivisions of Lots 6-7-8-9-10-11-12-13 Block Q of the Riviera and Vignolo Tract
 - Original Northeastly line of Blk Q Riviera and Vignolo Tract
 - Line Q B - Present SWly boundary of Winston Street
 - Black lines and figures Subdivisional lines and dimensions of the Jones and Ponet Block
 - Dotted blue line indicate division line between Jones & Ponet previous to March 20th 1889 shown on this copy thus — — — — —

A full, true and correct copy of the original
 (reduced to the scale of 40 feet to one inch
 recorded Feb 28 1890 at 19 min past 10 A. M.
 at request of V. Ponet
 John W. Francis County Recorder
 By George Bugbee Deputy

— — — — — lines on this copy shown thus
 — — — — — figures are underlined.