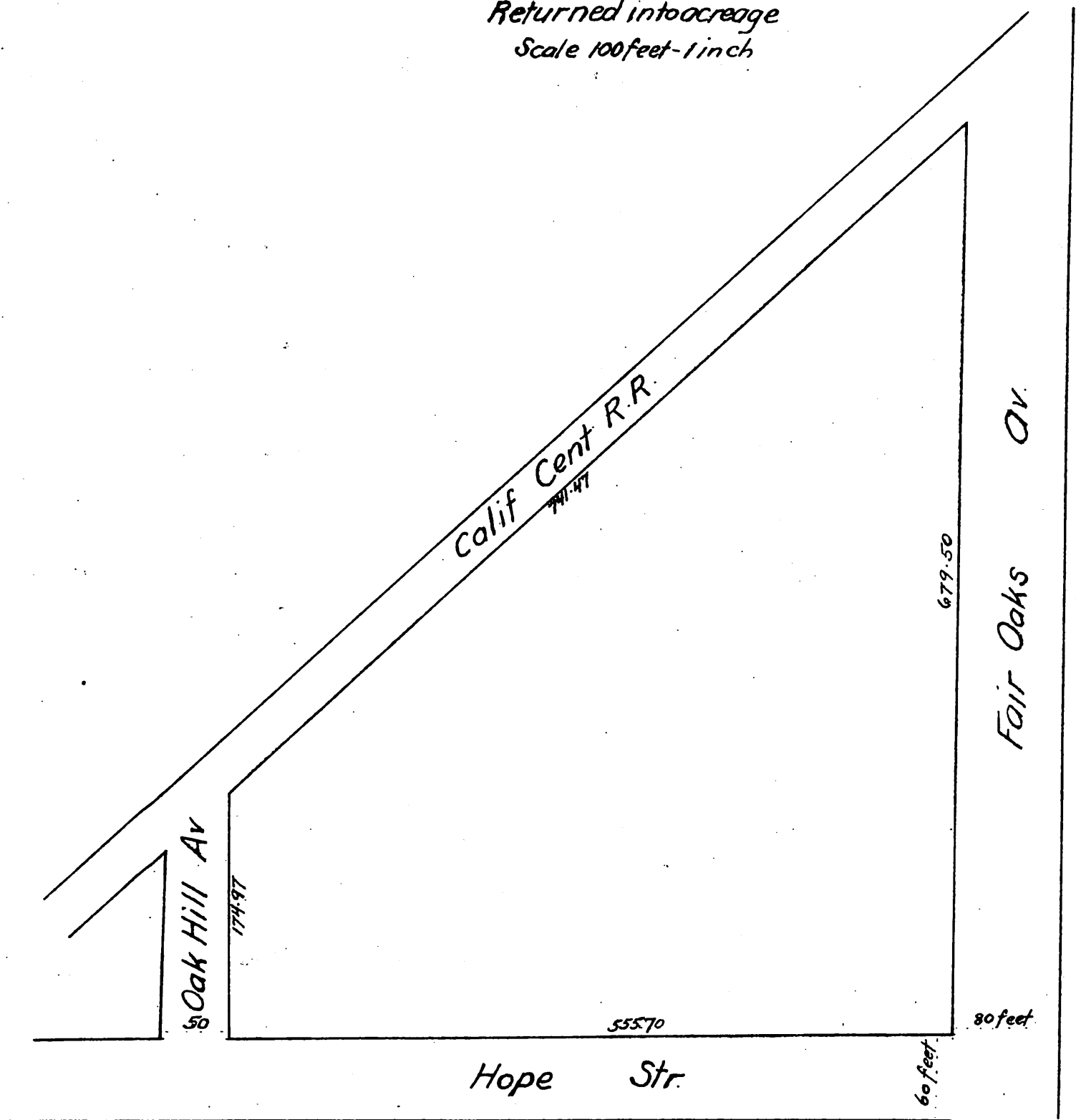


MAP
 showing part of
 Raab's Subdivision of South Pasadena
 Los Angeles Co. Cal.

Recorded in Book 15, Page 81
 Returned into acreage
 Scale 100 feet = 1 inch



A full, true and correct copy of the original
 recorded Feb 28, 1890 at 51 min past 10 A.M.
 at request of David Raab
 John W. Francis County Recorder
 By George B. Dugan, Deputy