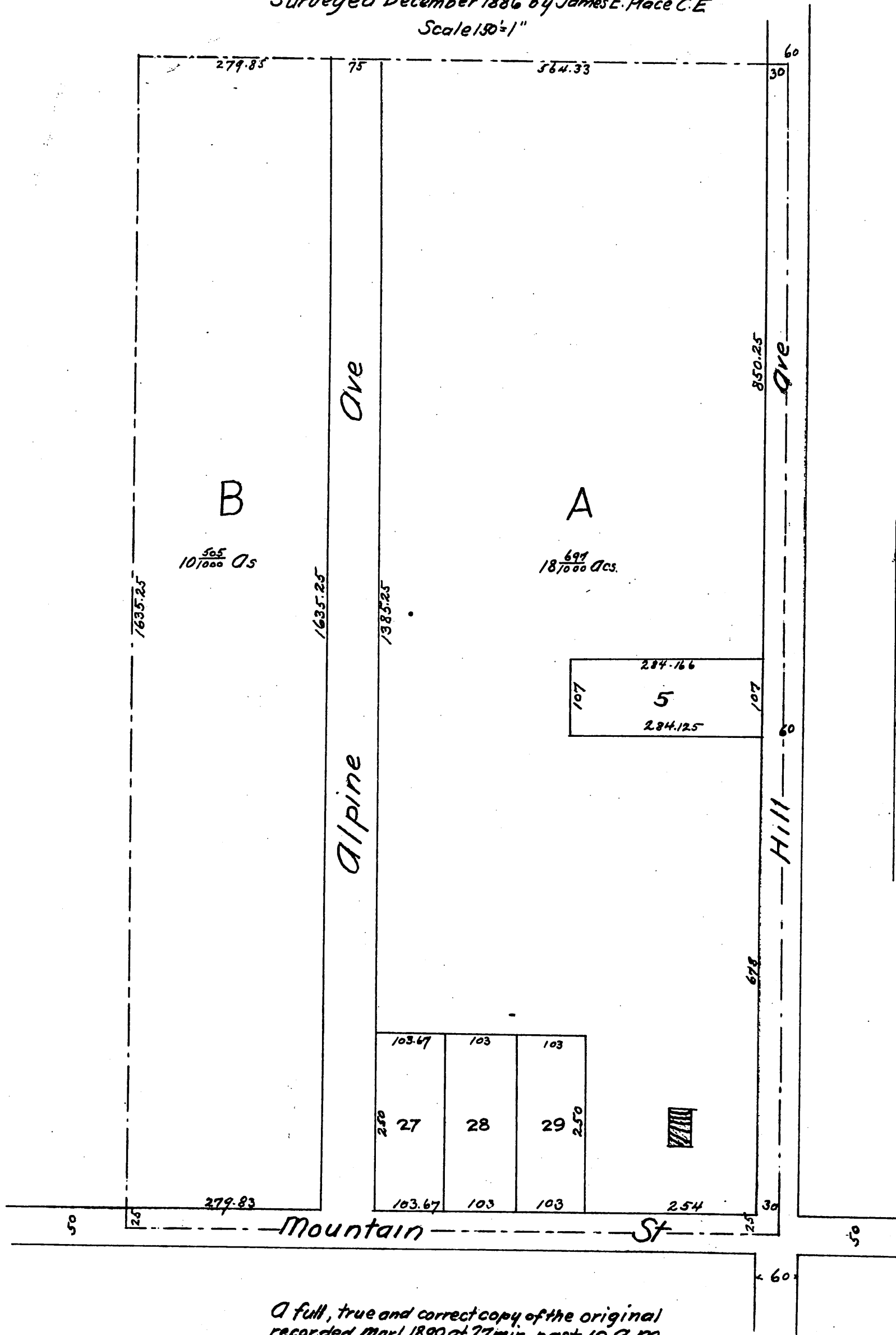


MAP OF R. Williams Replat of the Alpine Tract Excepting Lots 5, 27, 28 & 29

*Being a portion of that part of the Rancho San Pasqual known as the
A. B. Grogan Tract and being the South 36 acres of the 58³³/₁₀₀ Acres
conveyed by A. B. Grogan to William Pierce, by deed dated the 18th
day of May 1882 recorded in Book 89 of Deeds Page 468 Records
of the County of Los Angeles Cal.*

*Surveyed December 1886 by James E. Place C.E.
Scale 130' = 1"*



*A full, true and correct copy of the original
recorded Mar 1, 1890 at 27 min past 10 a.m.
at request of R. Williams
John W. Francis County Recorder
By George Bugbee Copy.*