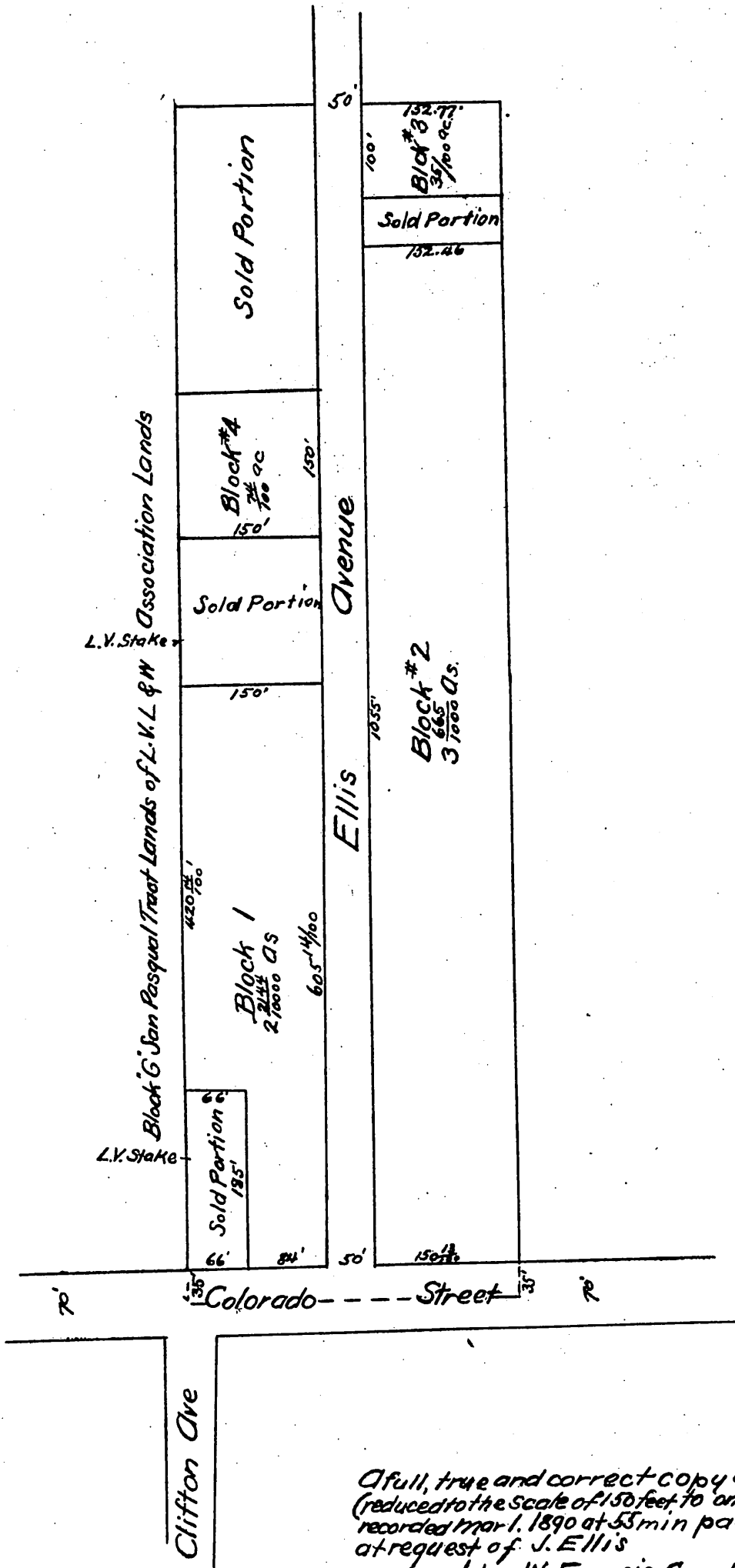


**Replatte**  
 OF  
**J. Ellis Colorado Street Subdivision**  
 Being a part of the O.B. Grogan Tract  
 Pasadena, California  
 Scale 80'-1"

(Old map recorded Book 25, Page 80 Miscellaneous Rec. Los Angeles Co. Cal.)



A full, true and correct copy of the original  
 (reduced to the scale of 150 feet to one inch)  
 recorded Mar. 1, 1890 at 55 min past 11 a.m.  
 at request of J. Ellis  
 John W. Francis County Recorder  
 By George Bugbee Deputy