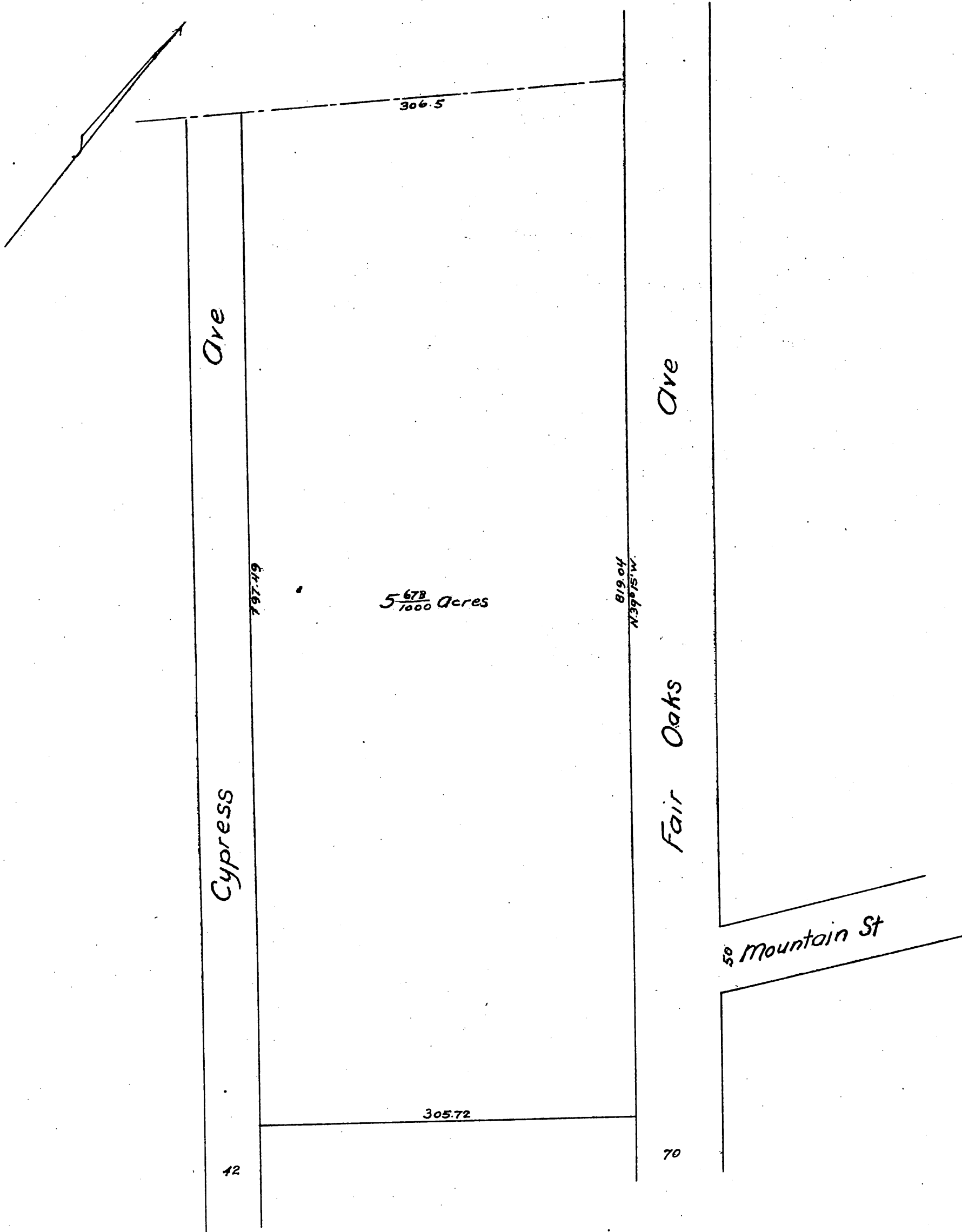


Re-plat
 OF
 Lots 19, 20, 21, 22, 23, 24, 25, 26, 27, 28, 29, 30, 31, 32, 33, 34,
 35, 36, 37, 38, 39, 40, 41, 42 of Joseph Wallace's Subdivision
 Pasadena, Cal.

Replat Feb'y 1890 by
 James E. Place C.E.

Surveyed Aug 1886
 by Wilhel Thompson

Scale 80ft = 1inch



A full, true and correct copy of the original
 recorded Mar 1, 1890 at 36 min past 9 P.M.
 at request of Joseph Wallace
 John W. Francis County Recorder