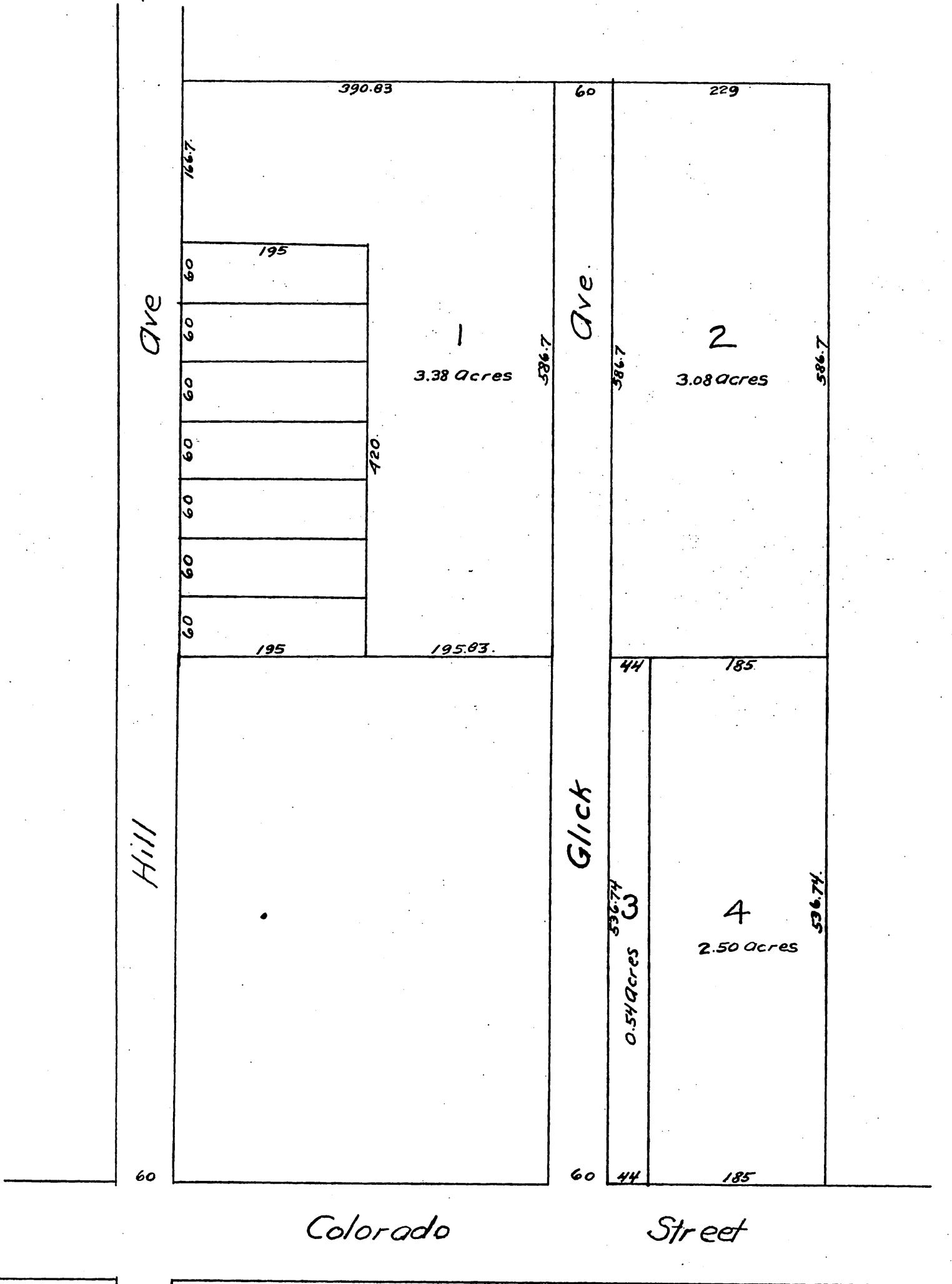


# Second Replot of part of F. F. Stetson's Subdivision

as recorded in Book 24 page 79 Miscellaneous Records of Los Angeles Co. Cal.

Scale 100ft. to 1 inch.

J. O. Marsh Draftsman.



A full, true and correct copy of the original  
(reduced to the scale of 120 feet to one inch)  
recorded Mar. 5, 1890 at 1 min past 1 P. M.  
at request of F. F. Stetson  
John W. Francis County Recorder.