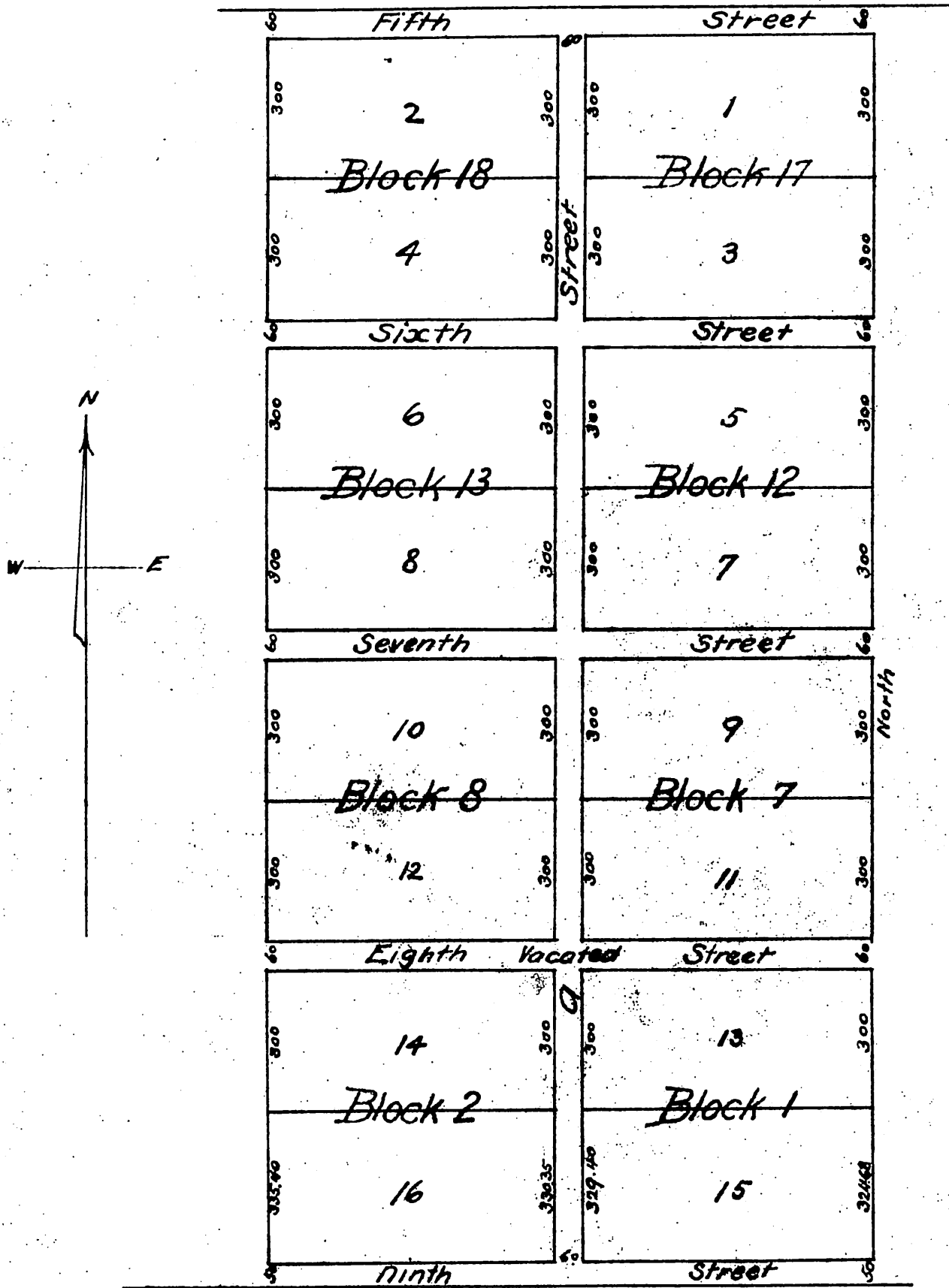


The Byram, Pattersonnd Miller Subdivision

of Lots 1, 2, 7, 8, 12, 13, 17 and 18 of the Childs Tract of the Ro
San Rafael Surveyed in June 1887 by McClure Bros
This tract adjoins Glendale Townsite

Eighth Street as shown in above plat was vacated by
the Board of Supervisors of Los Angeles County
California March 13th 1890



A full, true and correct copy of the original
(reduced to the scale of 300 feet to one inch)
recorded Mar. 24, 1890 at 42 min past 9 a.m.
at request of L.P. Shriver
John W Francis County Recorder
By George Rugeley Deputy.