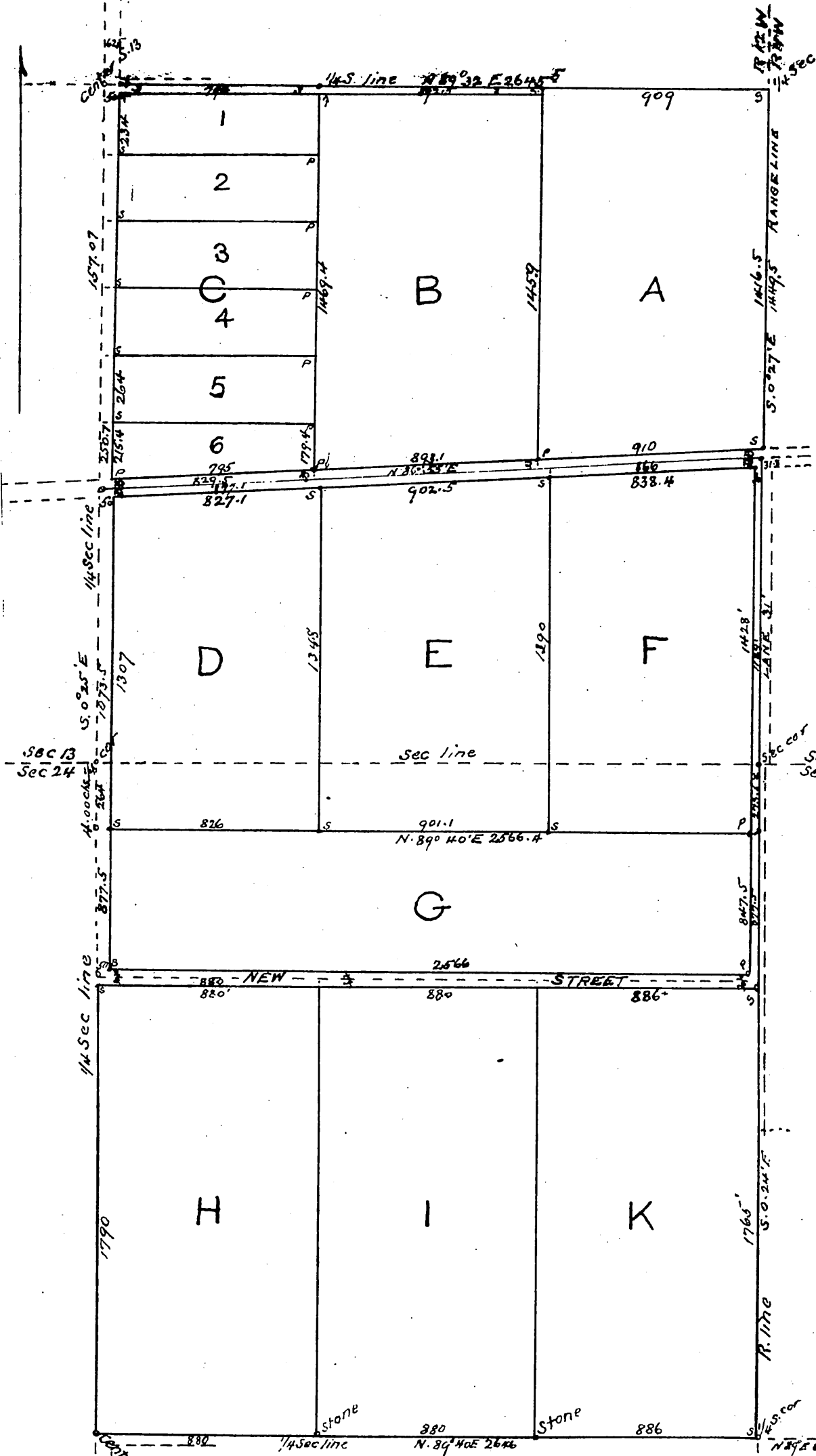


MAP
OF
Freer Tract
comprising the
SE 1/4 Sec 13 and NE 1/4 Sec 24 T1S R12W
S.B.M

o Cement point run deeply into the ground for corner
s Stake at corner set in the mortar when cement is used
P Post of redwood set in side the line when cement point is also set
Scale 400' = 1"



Witness bearings &c.

- Center Sec 24
Cor stake Block E.S.G Ext N 34° 06' W 36.4
- Intersection New Stand 1/4 S. line
Pepper tree 2' S 84° 15' W 14.2
- Qr Sec cor bet Sec 13 and 24
Pepper tree N 30° 25' W 34' Pepper tree S 22° 37' W 37' Eucalyptus tree 8' N 85° 50' W 44.65 ft
- Int El Monte Road and 1/4 Sec line
Glanthus tree 14' S 46° 41' W 49.4
Pepper tree 1 1/2' N 33° 37' W 38.5
- Center Sec 13
Pepper tree 3' S 28° 53' W 51.4
Cor of Block in plat E. San Gabriel N 73° 49' W 39.2
- Cor Sec 13, 24, 18, 19
Eucalyptus tree 6' S 11° 39' E 86.75
Angle of Rose in closure N 66° 35' E 33.5
- Int El Monte Road and Twp line
Pepper tree 24' S 29° 13' W 44.8
(Cement point set 5 ft N 86° 55' E stake for inclosure Block F)

Bel Enigun
Surveyor

march 1890

note dotted lines are shown in red on original

A full, true and correct copy of the original
(reduced to the scale of 500 feet to one inch
recorded March 31, 1890 at 5 min past 3 PM
at request of John F. Turner
John W. Francis County Recorder
By George Bugler Supt.