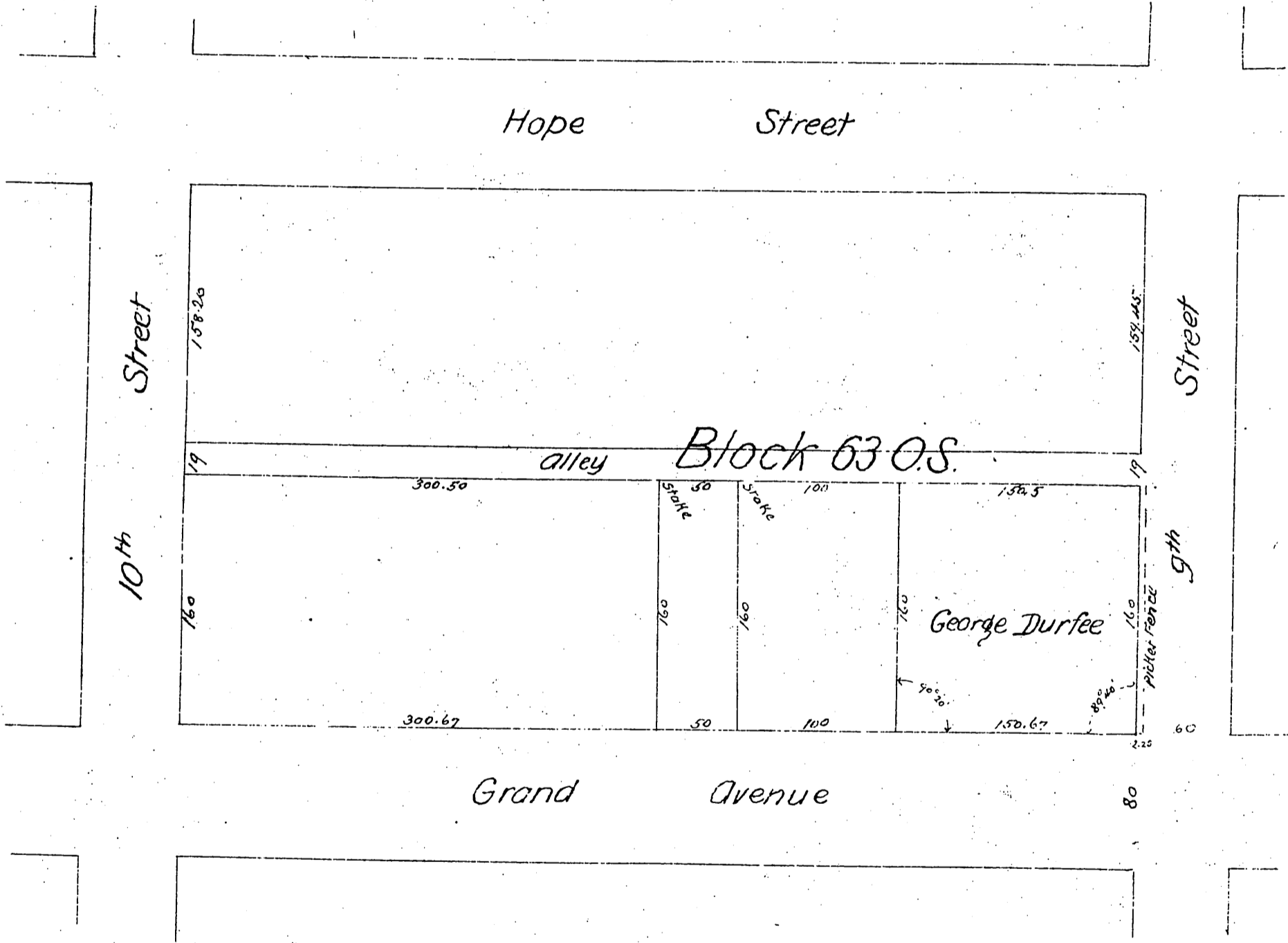


PLAT
 showing the Property of
George Durfee
 Located in Block 63 of Ords Survey
 of Los Angeles City
 Surveyed by A.G. Ruxton March 1890



A full, true and correct copy of the original
 recorded April 7, 1890 at 10 min past 12 M
 at request of Geo Durfee
 John W Francis, County Recorder
 By George Langille S/By.