

I certify This to be a correct

# MAP

OF THE

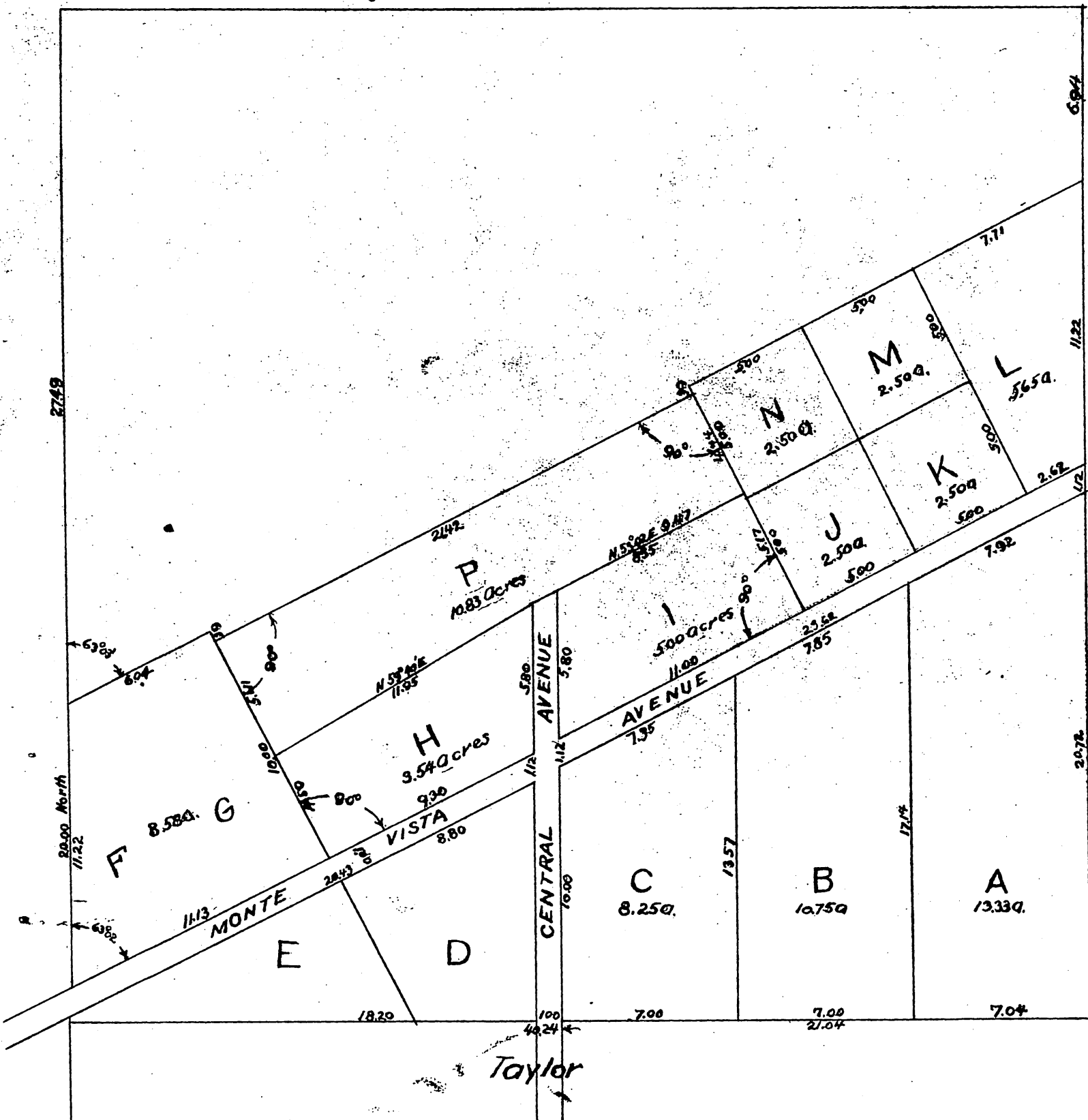
## San Demas Tract

Surveyed by Albert G. Ruxton

Scale 2 chains to 1 inch

Being subdivision of a portion of the  
N.E. 1/4 of Section 35, T.1 N. R.9 W

Albert G. Ruxton



Stephens

Taylor

A full, true and correct copy of the original  
(reduced to the scale of 5chs to one inch)  
recorded April 8, 1890 at 7 min past 12 M  
at request of F. P. Finney.

A full, true and correct copy of the original  
(reduced to the scale of 5chs to one inch)  
recorded April 8, 1890 at 7 min past 12 M  
at request of F. P. Finney.

John W. ...  
George ... Deputy