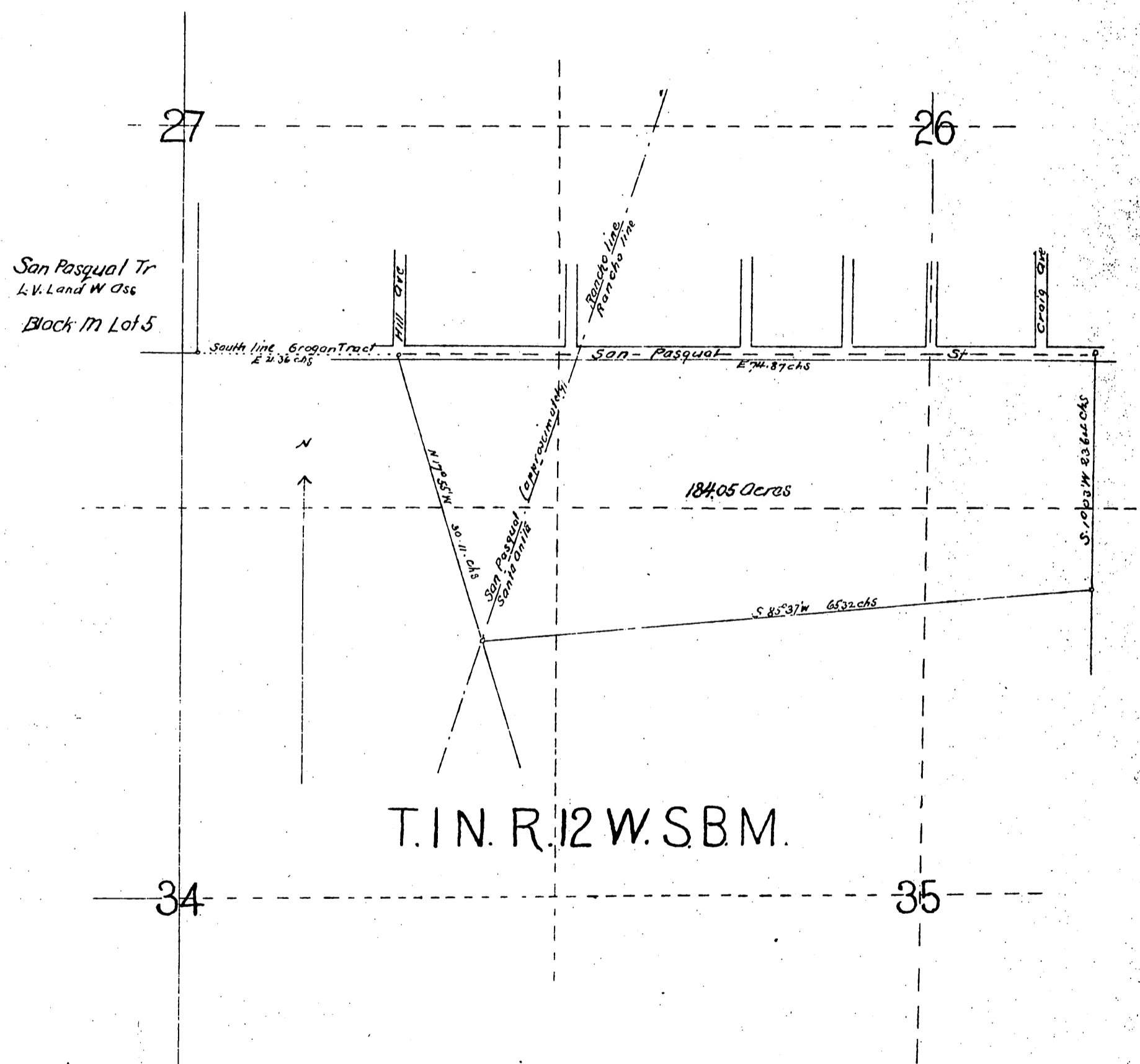


MAP showing exterior boundaries of
 184.05 acre tract of land owned by Maria
 Jesus de Shorb and included in Whitaker's
 Subdivision of Marceline according to a
 map recorded in Book 23 Miscellaneous
 Records of Los Angeles Co page 66 which
 subdivision has been ordered abandoned
 by the Board of Supervisors of said Los
 Angeles Co as to said 184.05 acres



A full, true and correct copy of the original
 (on a reduced scale) recorded April 9, 1890
 at 30 min past 12 M at request of Maria
 Jesus de Shorb
 John W. Francis County Recorder
 By George R. Beech Deputy