

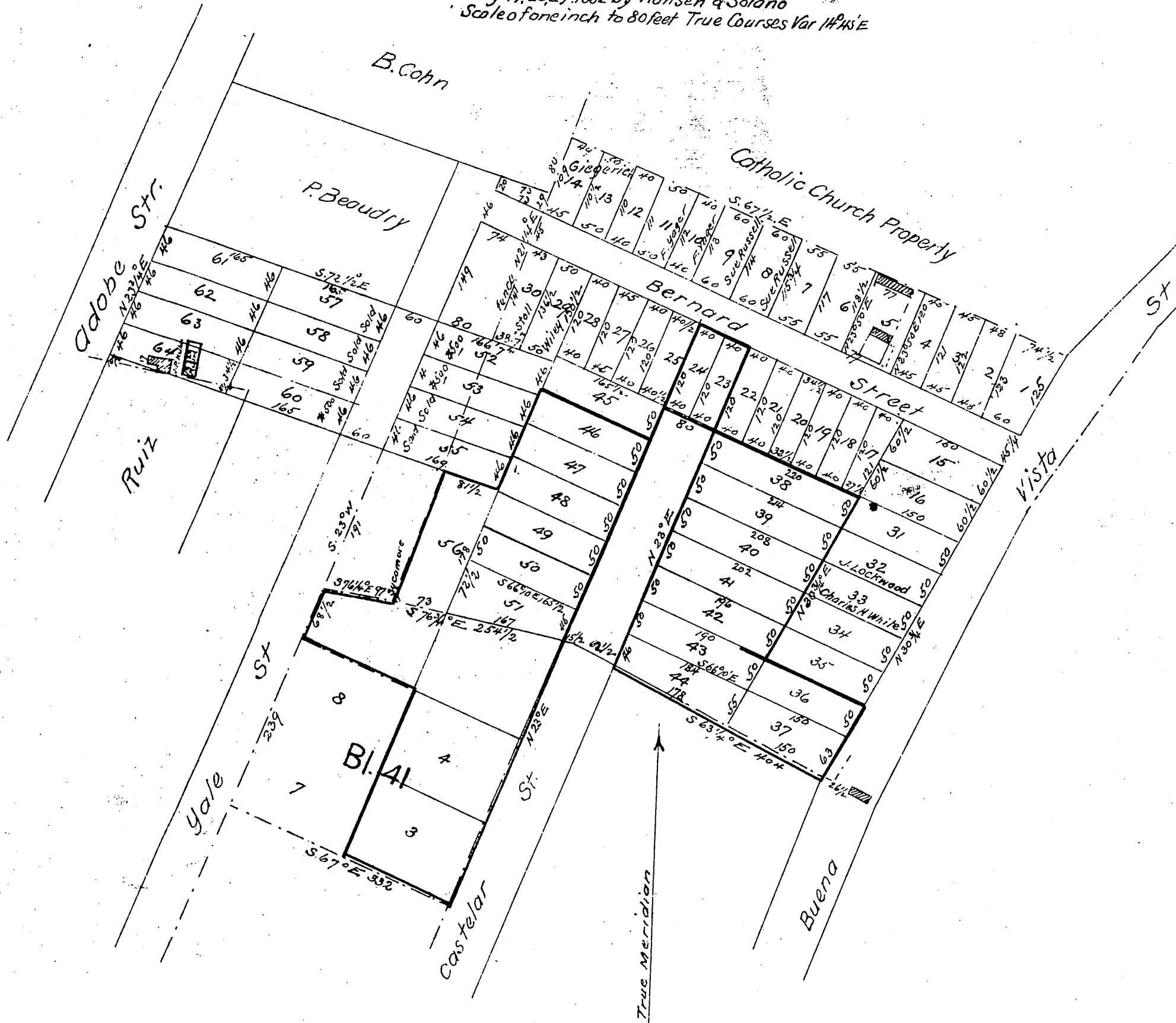
MAP

OF THE

BERNARD TRACT

in the
City of Los Angeles, Cal

Surveyed at the request of John Bernard
May 17, 26, 29, 1882 by Hansen & Solano
Scale of one inch to 80 feet True Courses Var 11° 45' E



A full, true and correct copy of the original
(reduced to the scale of 150 feet to one inch)
recorded April 11, 1890 at 45 min past 4 P.M.
at request of Arnold & Valentine
John W. Francis County Recorder
By George Fungler Deputy