

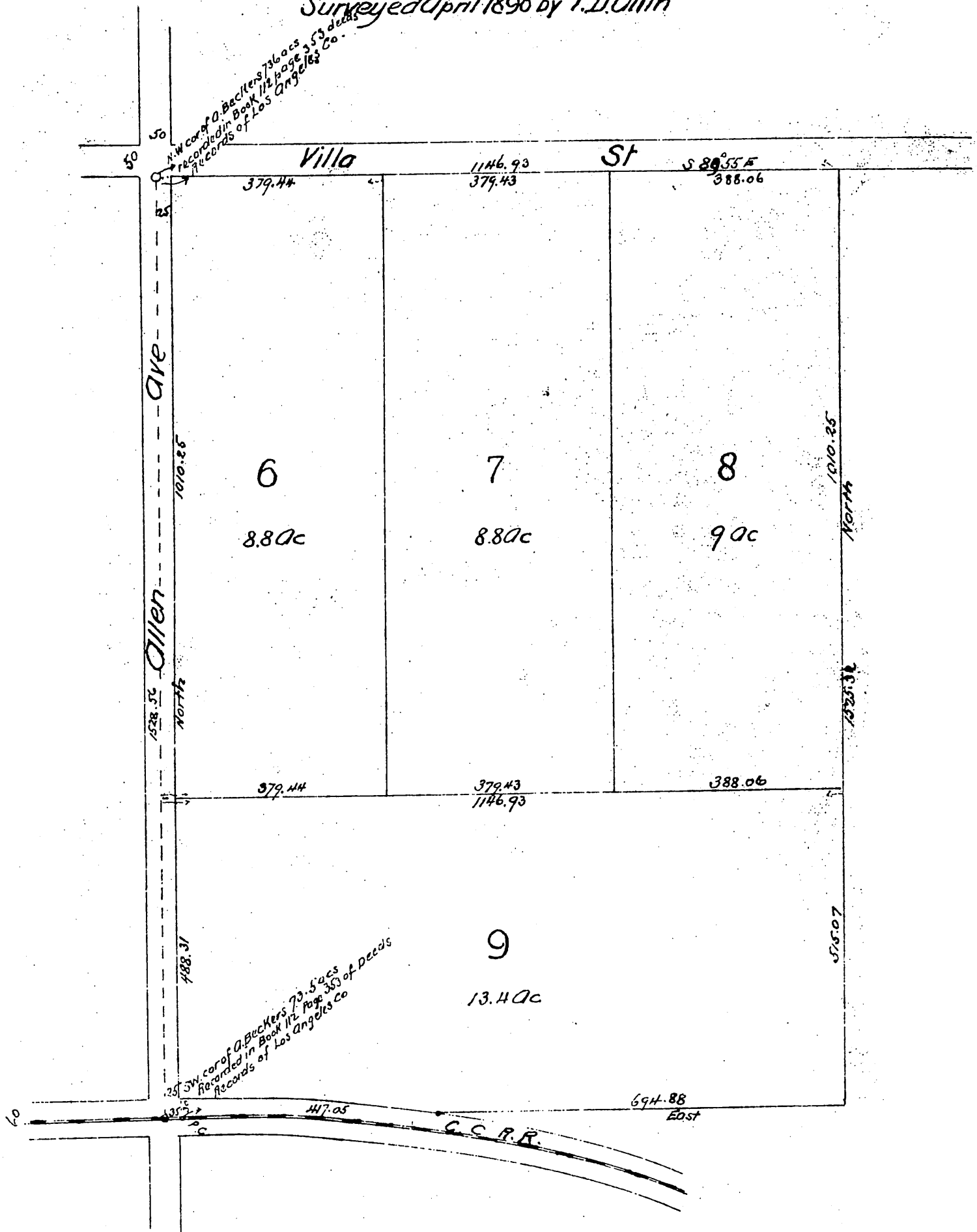
for page 89 see page preceding



OAK GROVE

Subdivision of a portion of the Ranchos
San Pasqual and Santa Anita
Los Angeles Co Cal.

Surveyed April 1890 by T.D. Allin



A full, true and correct copy of the original
(reduced to the scale of 200 feet to one inch)
recorded May 13, 1890 at 16 min past 4 P.M.
at request of Adam Becker
John W. Francis County Recorder
By George Ringbee Deputy.