

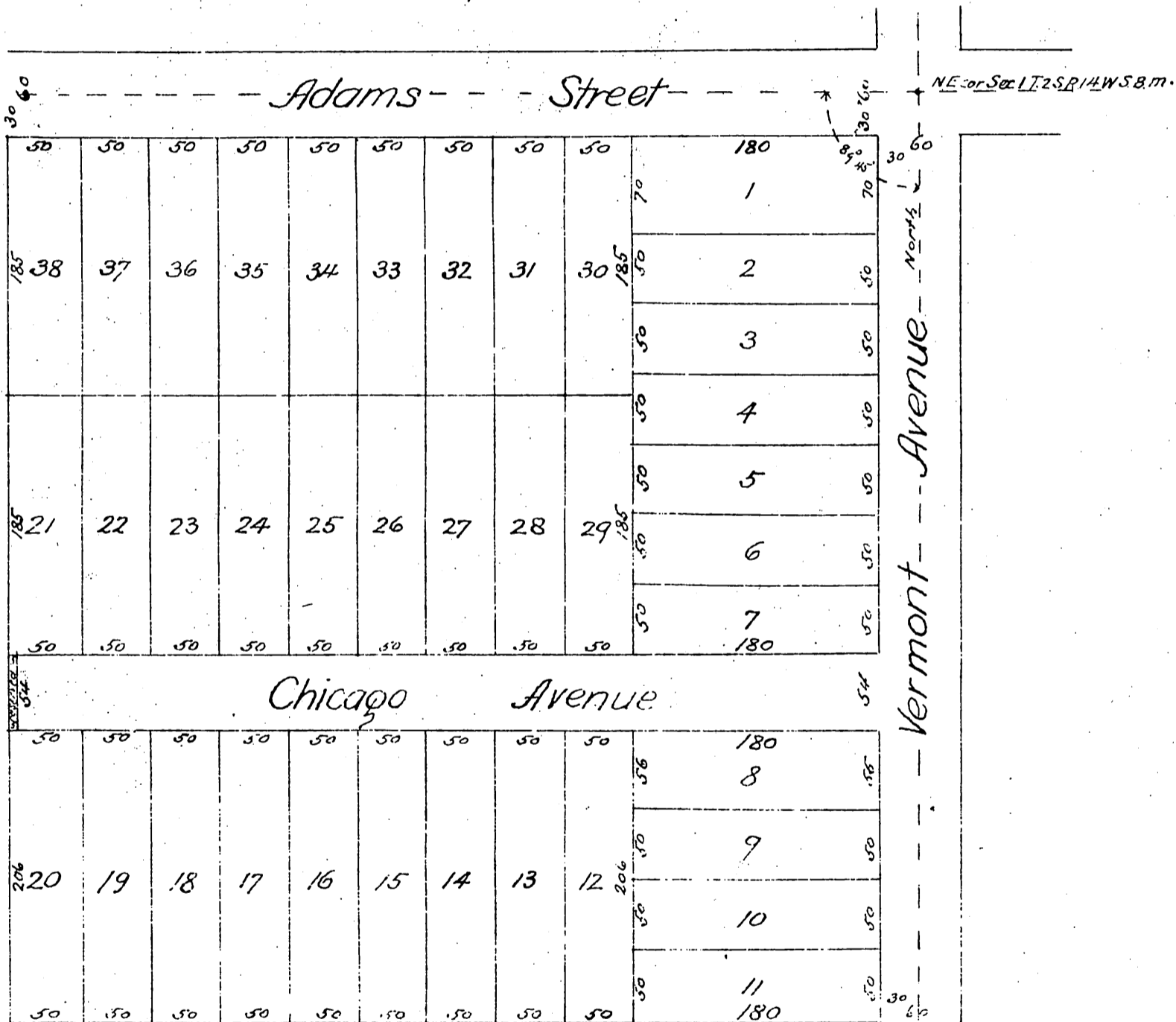


# MAP OF THE PLYMOUTH TRACT

Los Angeles Co, Cal  
The Property of G Karpe

Surveyed May 22 & 23, 1888 by J. H. Dochtweiler  
Scale 60 feet to one inch

Note The Plymouth Tract is a subdivision  
of the NE 1/4 of NE 1/4 of NE 1/4 Sec 1 T2S R14W S.B.M.



A full true and correct copy of the original  
(reduced to the scale of 100 feet to one inch)  
recorded April 21, 1890 at 12 min past 10 A.M.  
at request of G Karpe  
John W. Francis County Recorder  
By George R. Anglin Deputy