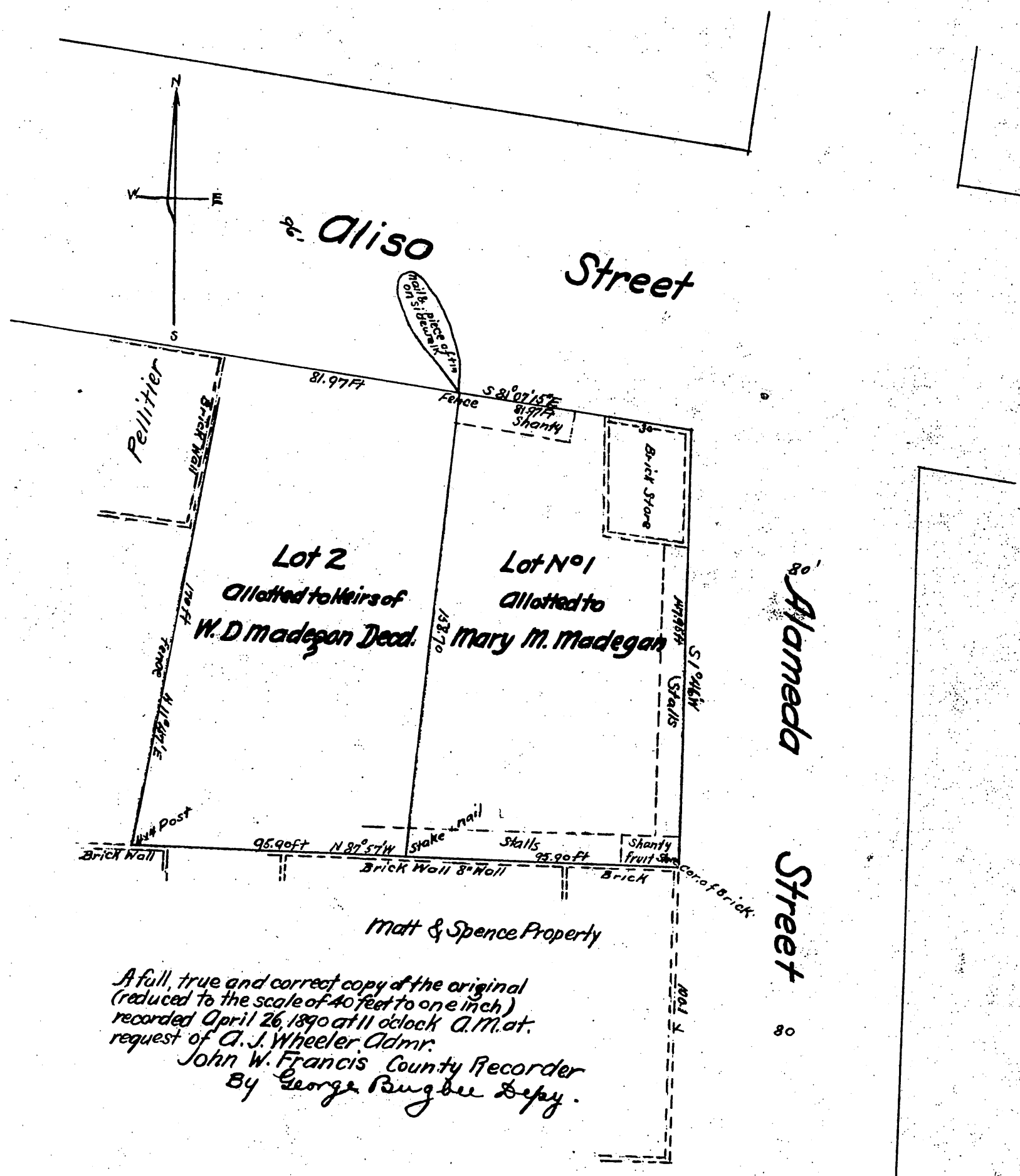


MAP

of Partition of the Estate of Mary Madegan deceased,
 Michael O'Brie Madegan deceased, and Eliza Madegan
 deceased in the City of Los Angeles Cala.
 Surveyed in November 1889 at request of Victor Panet
 A.E. Pomeroy M.L. Samson Commissioners in Partition
 by J. A. Bernal.

Scale 20ft to an inch.



A full, true and correct copy of the original
 (reduced to the scale of 40 feet to one inch)
 recorded April 26, 1890 at 11 o'clock A.M. at
 request of A. J. Wheeler Admr.
 John W. Francis County Recorder
 By George Rungbee Depy.

Commercial St.