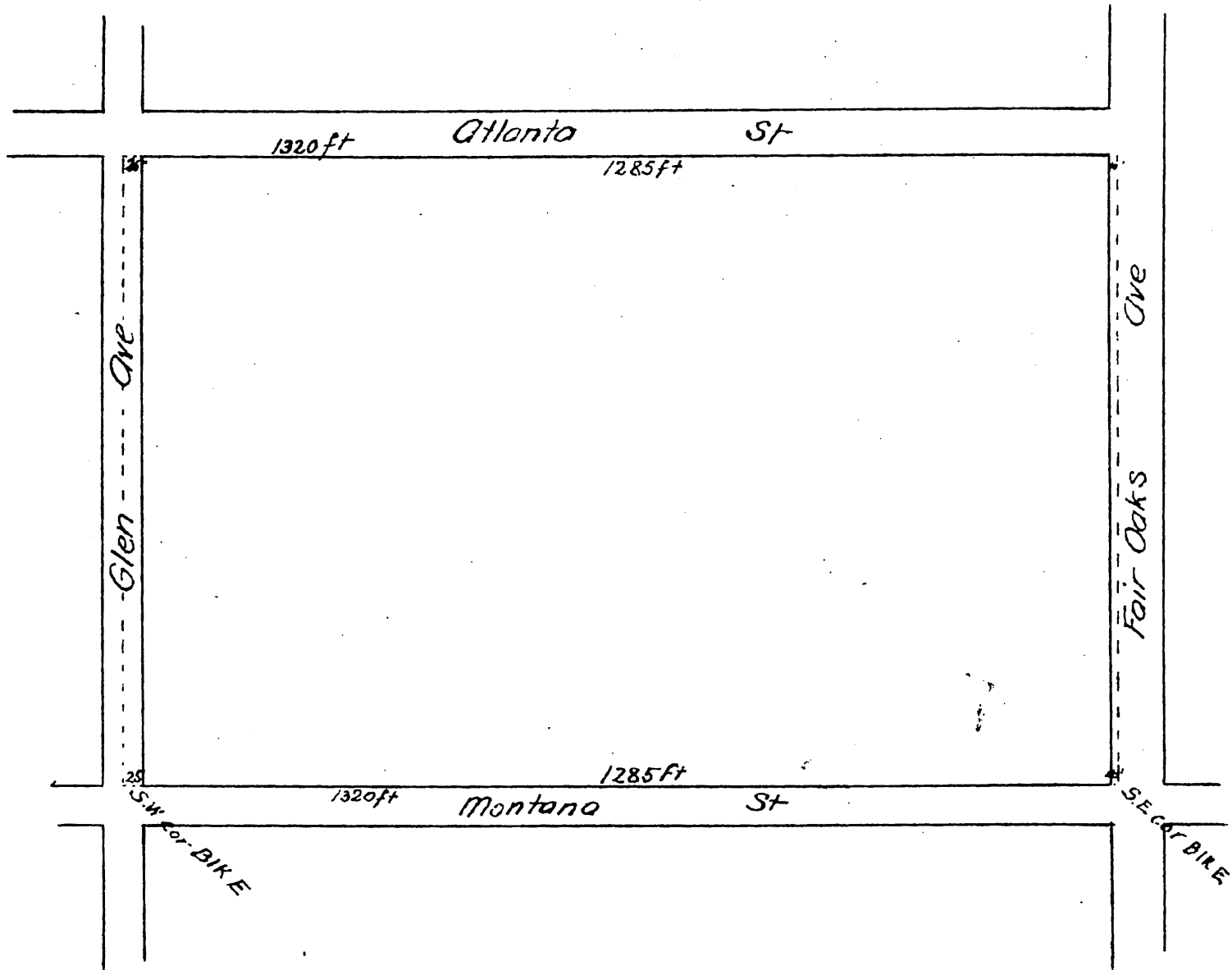


MAP
 OF
Amos Wrights Subdivision
 of Painter and Ball Tract, Pasadena
 Recorded in Book 25 Page 26

Blocks A, B and C as restored to acreage as vacated by an
 order of the Board of Supervisors Mich 13 1890 Road Book 3 p. 168



A full, true and correct copy of the original
 (reduced to the scale of 200 feet to one inch)
 recorded May 15 1890 at 51 min past 3. P.M.
 at request of O. J. Painter
 John W. Francis County Recorder
 By George Bugbee Deputy.