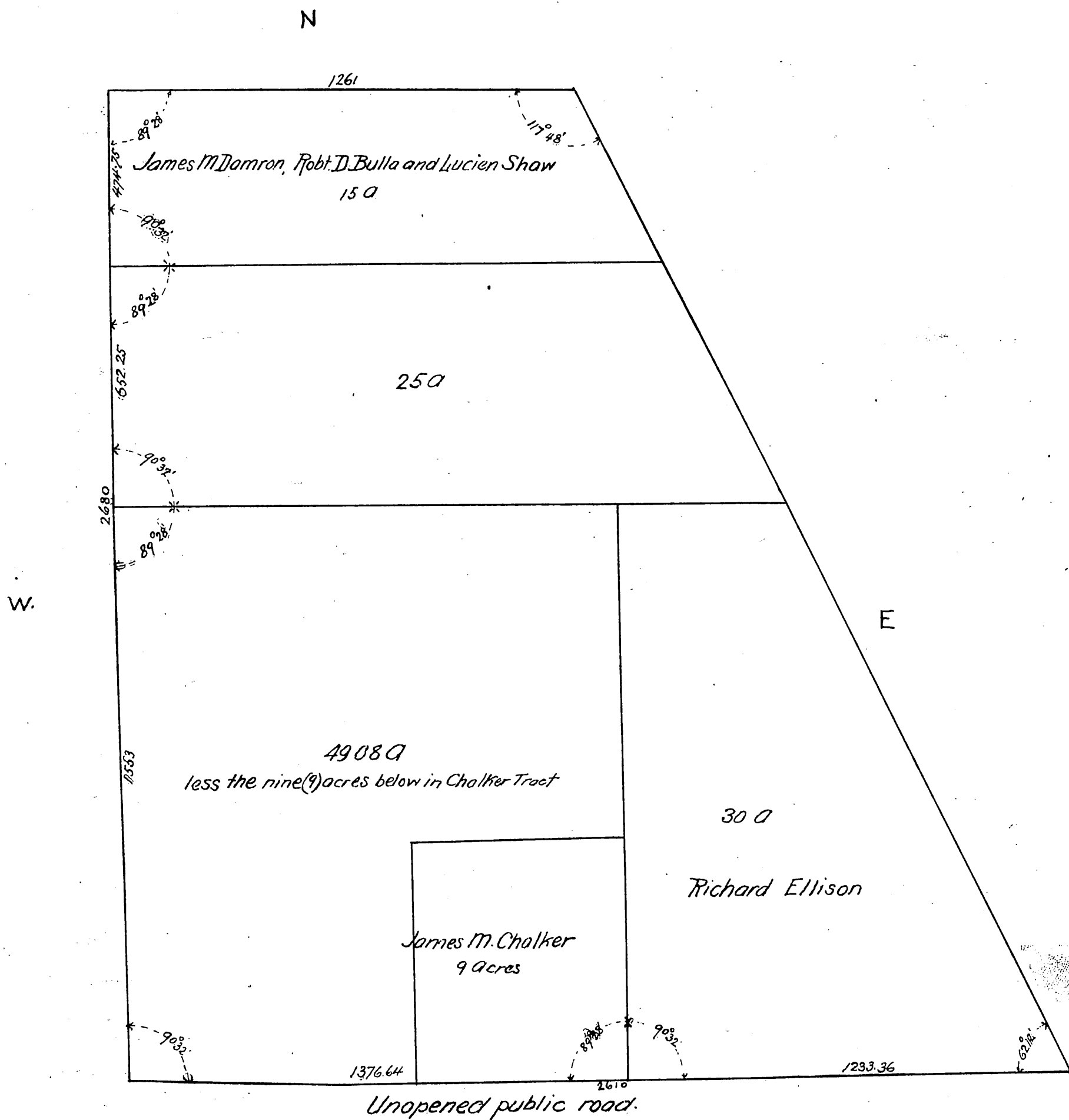




PLAT
 OF
 HENRY THOMAS' SUBDIVISION
 of the NE 1/4 of Sec 12, T1S R10W S.B.M.
 Los Angeles Co Cal.
 Scale 200ft to one inch
 Wagner & Haight Surveyors.



A full, true and correct copy of the original
 (reduced to the scale of 300 feet to one inch) is
 recorded July 17, 1890 at 4 o'clock past 2 P.M.
 at request of Eliza Thomas
 John W Francis County Recorder
 By George Bugbee Depy.