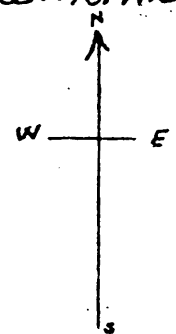
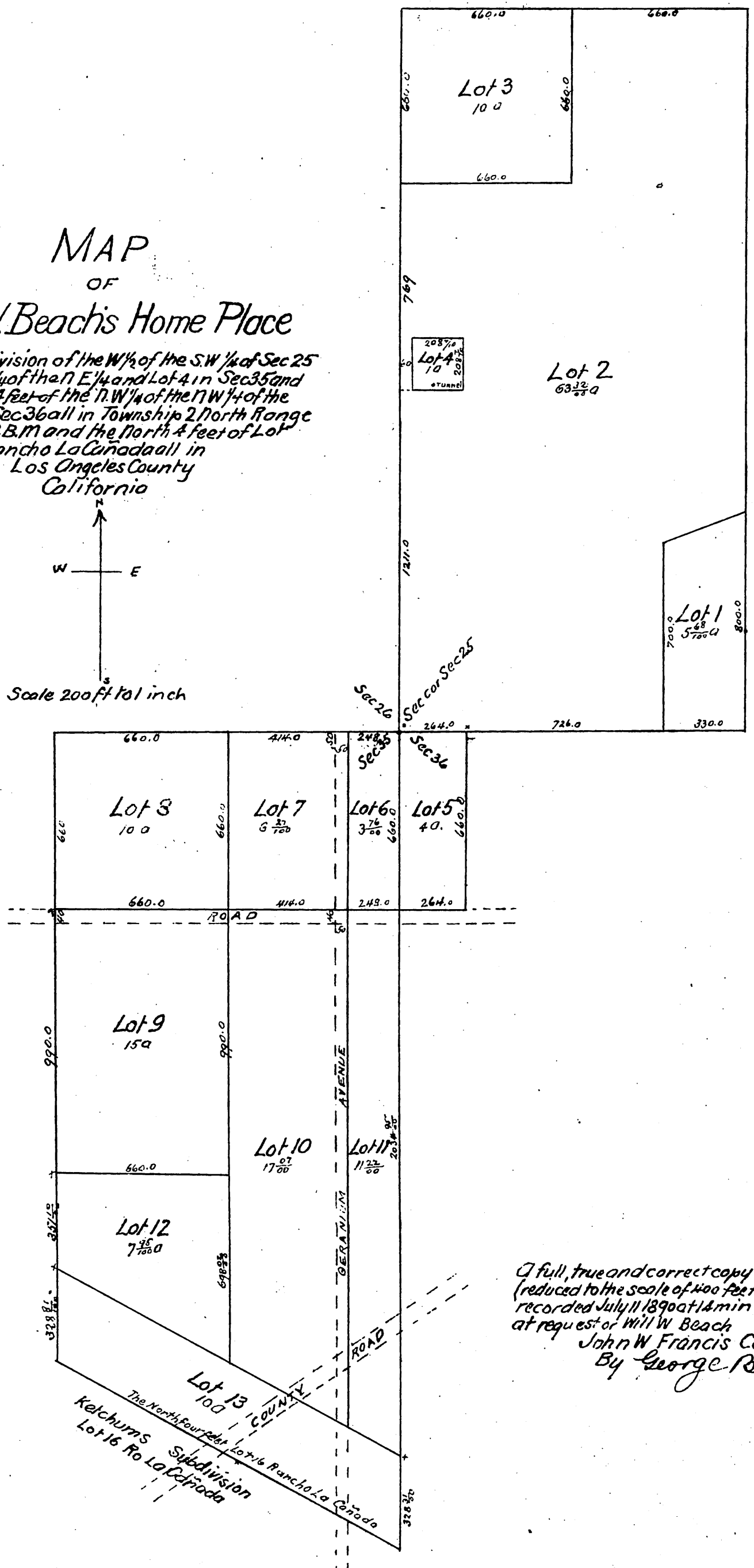


MAP OF Will. W. Beach's Home Place

Being a subdivision of the W 1/2 of the S.W. 1/4 of Sec 25 and the N.E. 1/4 of the N.E. 1/4 and Lot 4 in Sec 35 and the West 264 feet of the N.W. 1/4 of the N.W. 1/4 of the N.W. 1/4 of Sec 36 all in Township 2 North Range 13 West S.B.M. and the North 4 feet of Lot 16 in Rancho La Cañada all in Los Angeles County California



Scale 200ft to 1 inch



A full, true and correct copy of the original (reduced to the scale of 100 feet to one inch) recorded July 11 1890 at 11 min past 3 P.M. at request of Will W Beach
John W Francis County Recorder
By George Ridgbee deputy