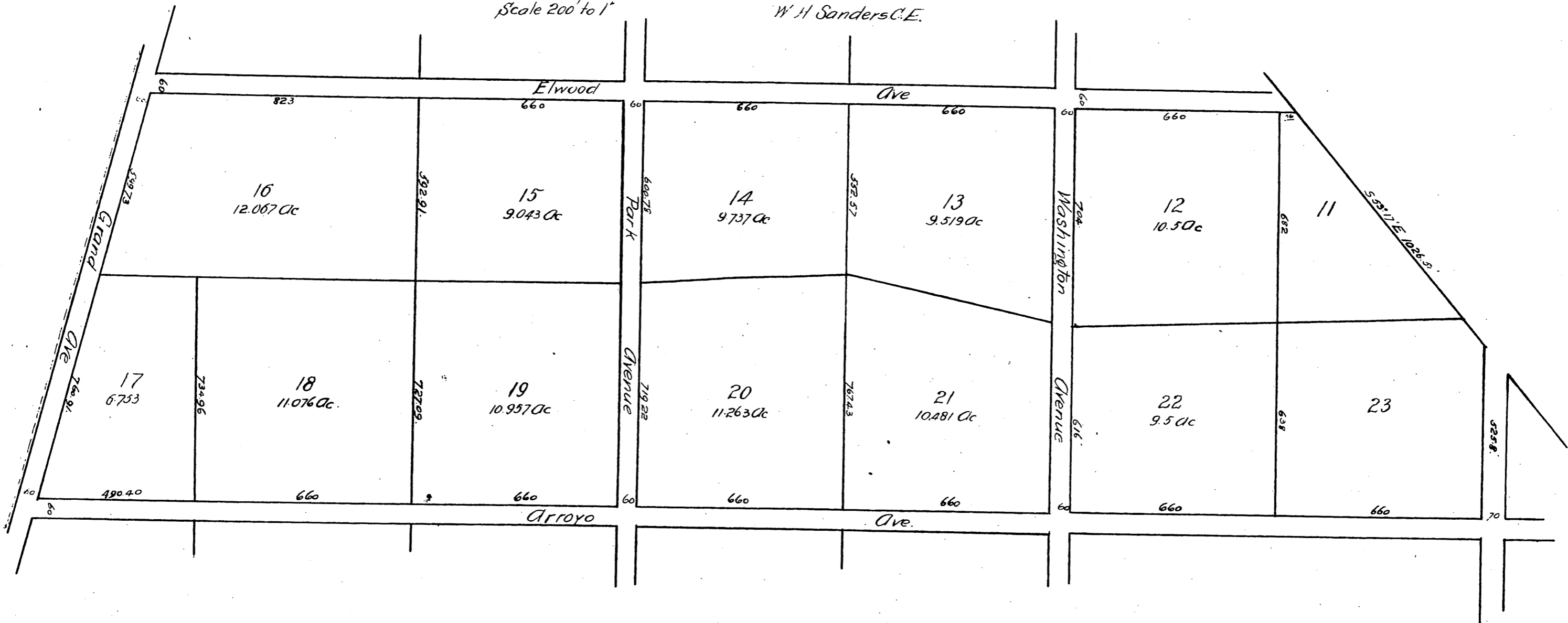


Rearrangement  
 Lots 11 to 23 inclusive J.E. Packard's Orange Grove Tract  
 Pomona, Calif.

All areas and distances are to the centre of Streets. On the West  
 side a strip of land 3 feet wide is reserved between West side  
 of Street and Western boundary of tract.

Scale 200' to 1"

W. H. Sanders C.E.



A full, true and correct copy of the original  
 (reduced to the scale of 300 feet to one inch)  
 recorded June 12 1890 at 31 min past 10 A.M.  
 at request of John E. Packard.

John W. Francis County Recorder  
 By George Bugbee Deputy.