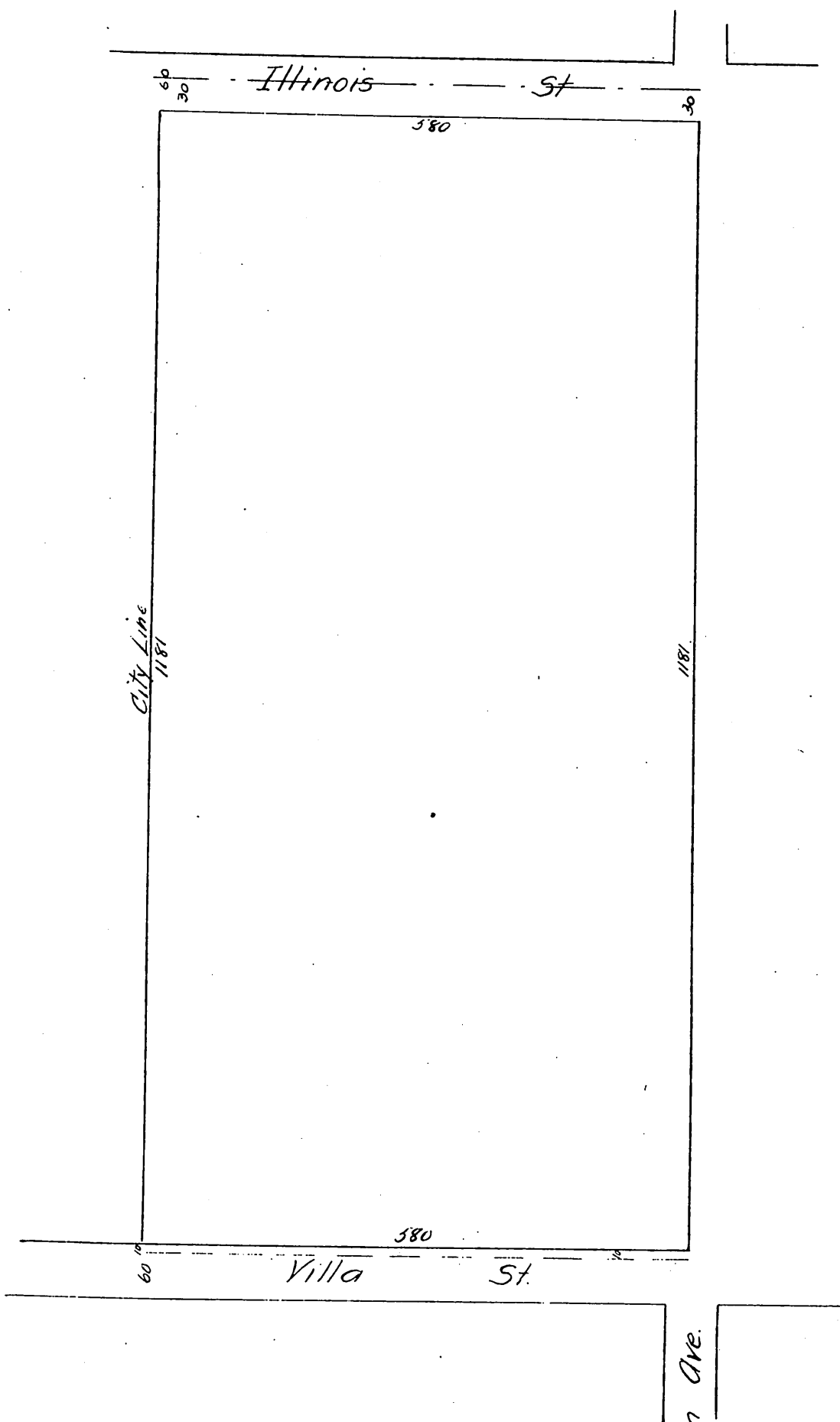


MAP  
 of the re-survey of  
 Briggs' Addition to Pasadena

Being the Western 16.26 acres of the 33.78 acres conveyed  
 by A. T. Grogan to A. F. Sproul, situated in the  
 Grogan Tract, Pasadena, Los Angeles Co., Cal.

Scale 150 ft to the inch. Surveyed May 1890 by F. H. Post.

As vacated by order of the Board of Supervisors  
 Apr 9<sup>th</sup> 1890. Recorded in Road Book 1193  
 of said Board on pp 193, 194 & 195.



A full, true and correct copy of the original  
 recorded June 19, 1890 at 41 min past 3 P.M.  
 at request of Geo. W. Briggs  
 John W. Francis County Recorder.  
 By George Bugbee Deputy.

Wilson Ave.