

MAP

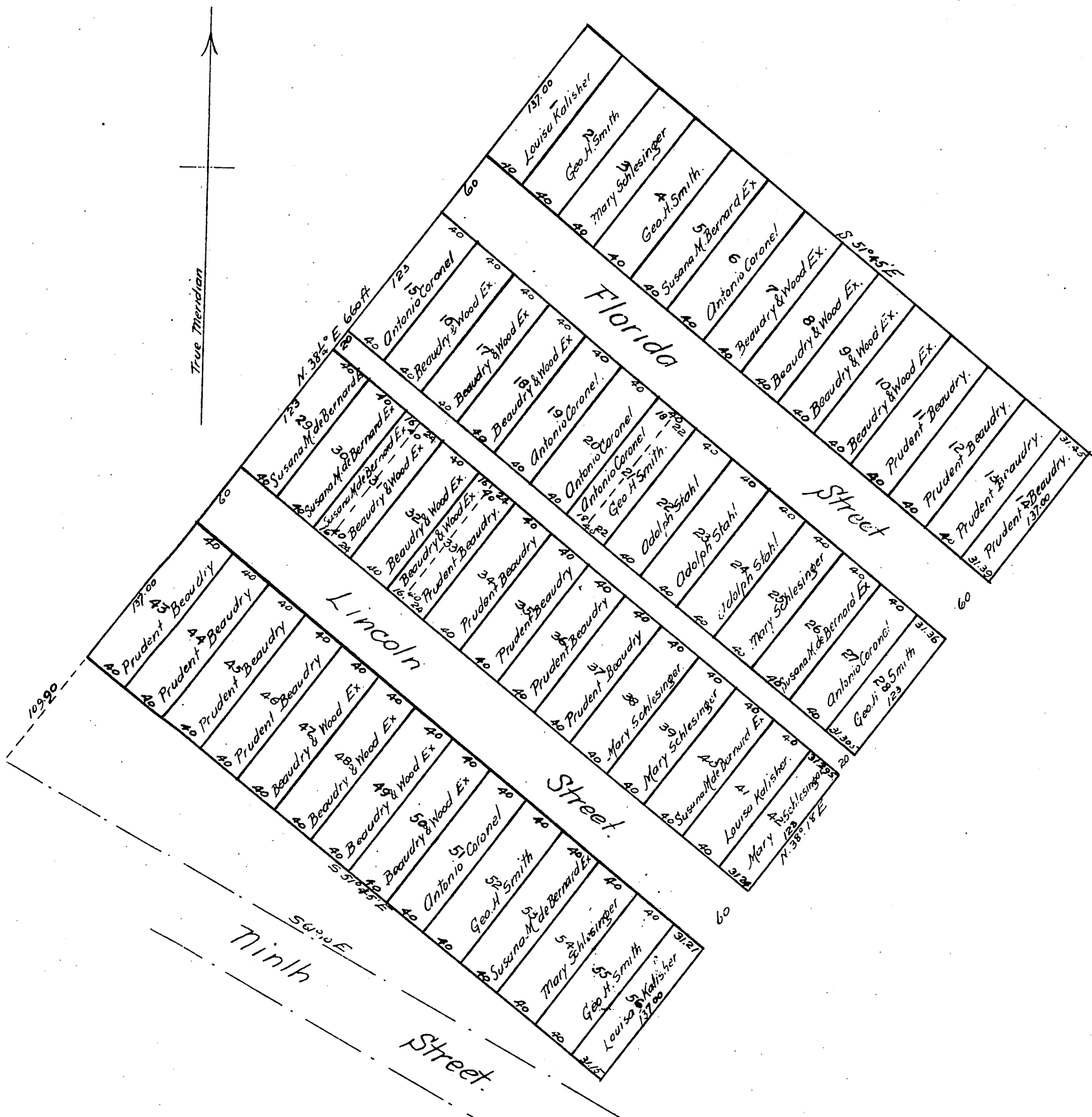
OF THE

FLORIDA TRACT

in Los Angeles City California

Being that part of the American Cemetery Tract lying West of Moore Street and more particularly delineated on a map recorded in Book 34, page 5 of Miscellaneous Records Los Angeles County, showing the partition made by the referees in partition Geo. Hansen, John E. Jackson & Frank A. Gibson under the decree of the Superior Court in & for Los Angeles Co. Cal. of date Feb. 6. 1890.

Scale of 1 inch to 60 feet. True Courses.
Surveyed Feb. 25. 1890 by Alfred Solano



In the Superior Court of Los Angeles County California.

Adolph Stahl, Plaintiff
vs.
Geo. H. Smith et al Defendants } No. 10354.

We the undersigned Referees in partition, do hereby certify that, this map shows the partition made by us of that portion of the American Cemetery Tract lying West of the West line of Moore Street and more particularly described in the Interlocutory Decree of date Feb 6, 1890 and is the map referred to in our report of partition of this date. Los Angeles.

George Hansen }
John E. Jackson } Referees in Partition
Frank A. Gibson }