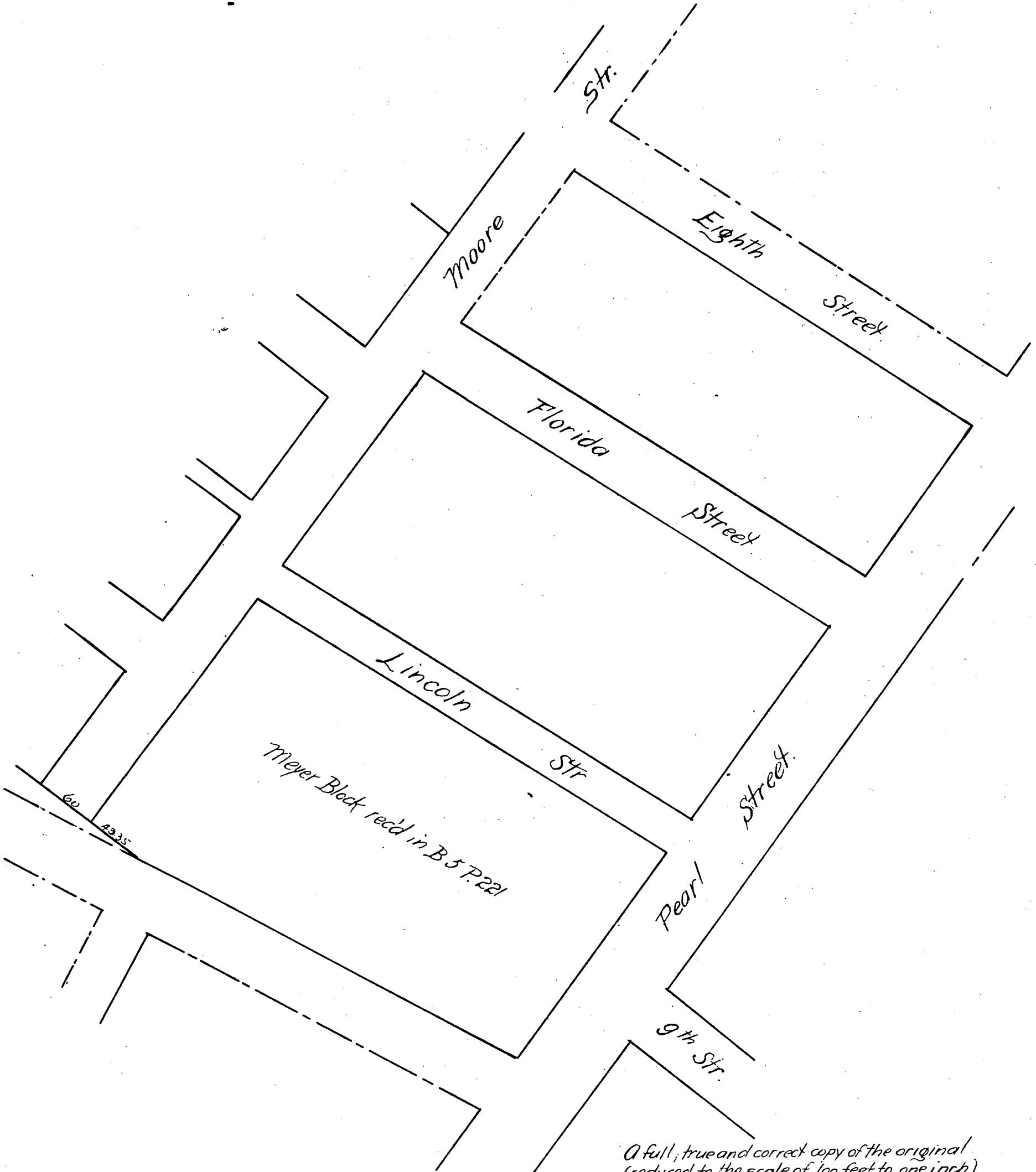


Table of Allotments.

Names	Interest	Allotments
Adolph Stahl	9/160	Lots 22, 23 & 24
Louisa Kalisher Exe ^s	9/160	Lots 1, 41 & 56
George H. Smith	16/160	Lots 24, 52, 28, 55 & E 22 ft. of 21
Mary Schlesinger	18/160	Lots 3, 25, 38, 39, 42 & 54
Prudent Beaudry	36/160	Lots 11, 12, 13, 14, 34, 35, 36, 37, 43, 44, 45 & 46 & E 24 ft. of 33
Antonio F. Coronel	18/160	Lots 6, 15, 19, 20, 27, 51 & W 18 ft. of 21
Susana M. de Bernard Exe ^s	18/160	Lots 5, 26, 29, 30, 40, 53 & W 16 ft. of 31
P. Beaudry & F. W. Wood Exes	36/160	Lots 7, 8, 9, 10, 16, 17, 18, 32, 47, 48, 49, 50 & E 24 ft. of 31, also W 16 ft. of 33



A full, true and correct copy of the original
 (reduced to the scale of 100 feet to one inch)
 recorded July 14 1890 at 13 min past 11 A.M.
 at request of J. W. O'Melveny
 John W. Francis County Recorder.
 By George Tugbee Deputy.