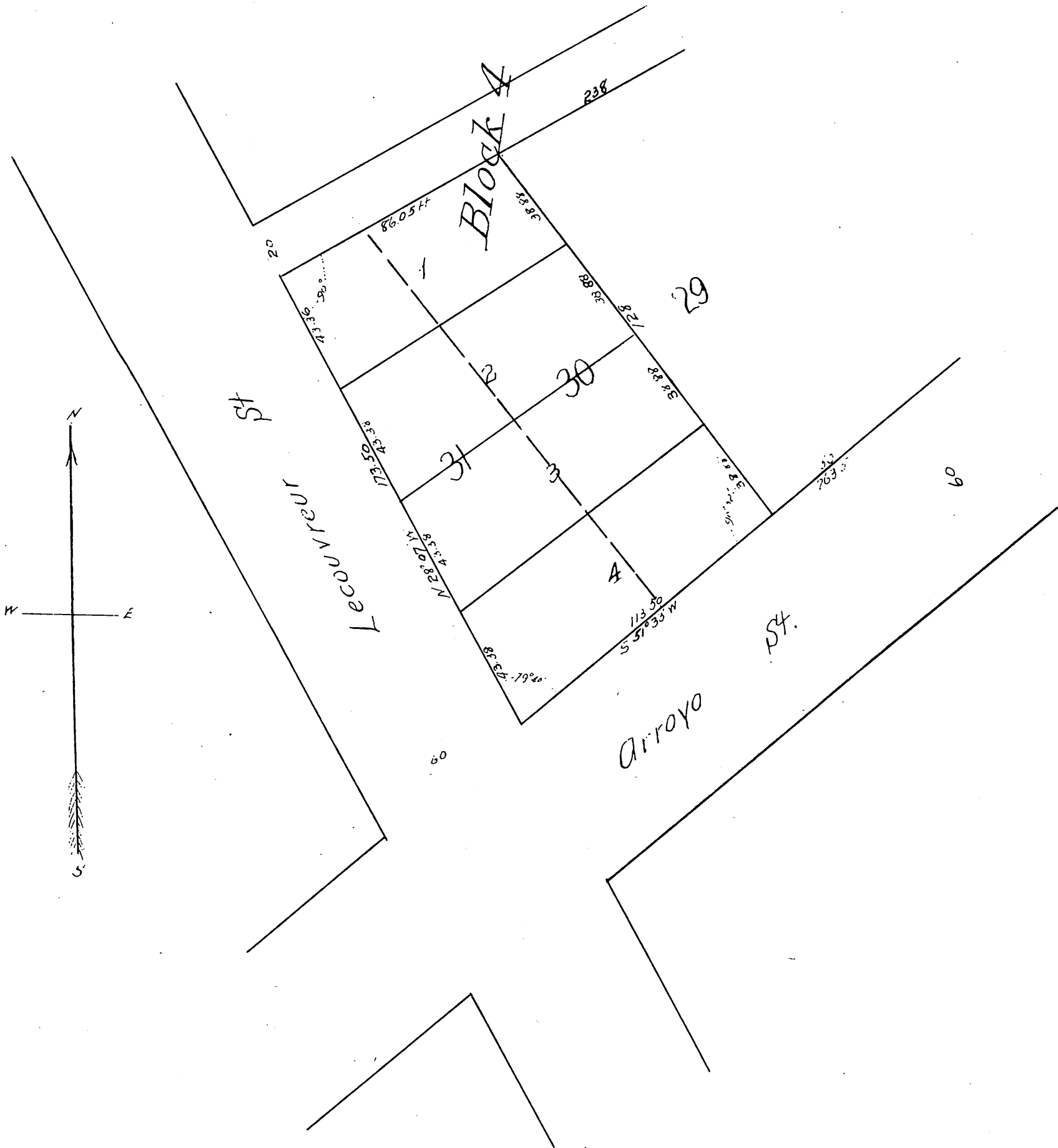


MAP  
OF  
Geo. F. Coffin's Subdivision  
of Lots 30 and 31 Block 4 of the Hamilton Tract  
Los Angeles City Cala.  
August 1890 J.A. Bernal Surveyor  
Scale 20ft = 1 inch.



A full true and correct copy of the original  
(reduced to the scale of 40 feet to one inch)  
recorded Aug 18 1890 at 19 min past 12 M  
at request of Geo F. Coffin

John W Francis County Clerk  
By George Runkle Deputy