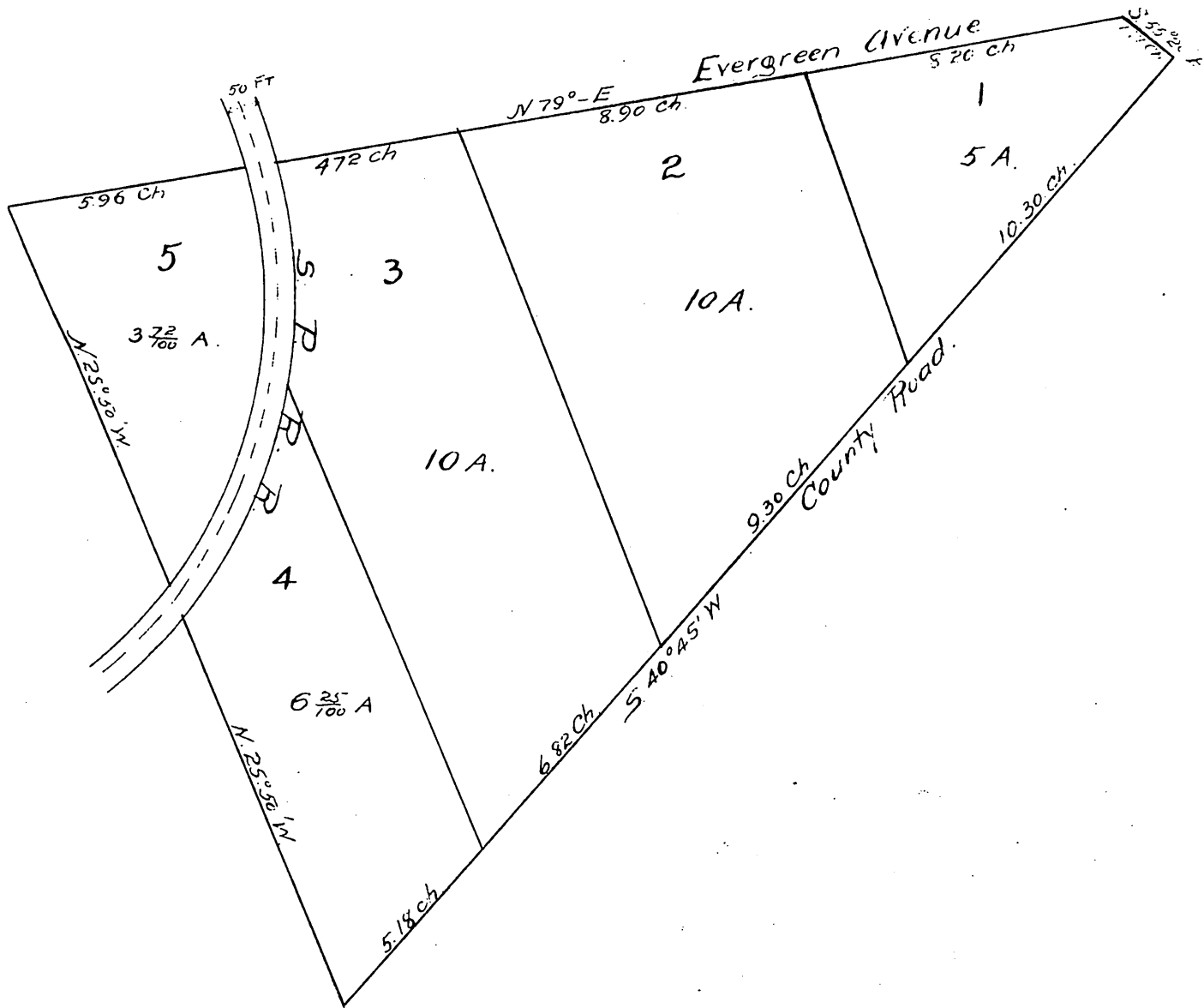


MAP
 OF
 Putnam's Sbdvision
 OF THE
 Cole Tract
 Scale 4 Chs to 1 inch.



A full, true and correct copy of the
 original recorded Oct. 10th 1890 at
 5 min post 9 AM. at request of J.C. Hiatt
 John W Francis County Recorder.
 By William K. Mills, Deputy.