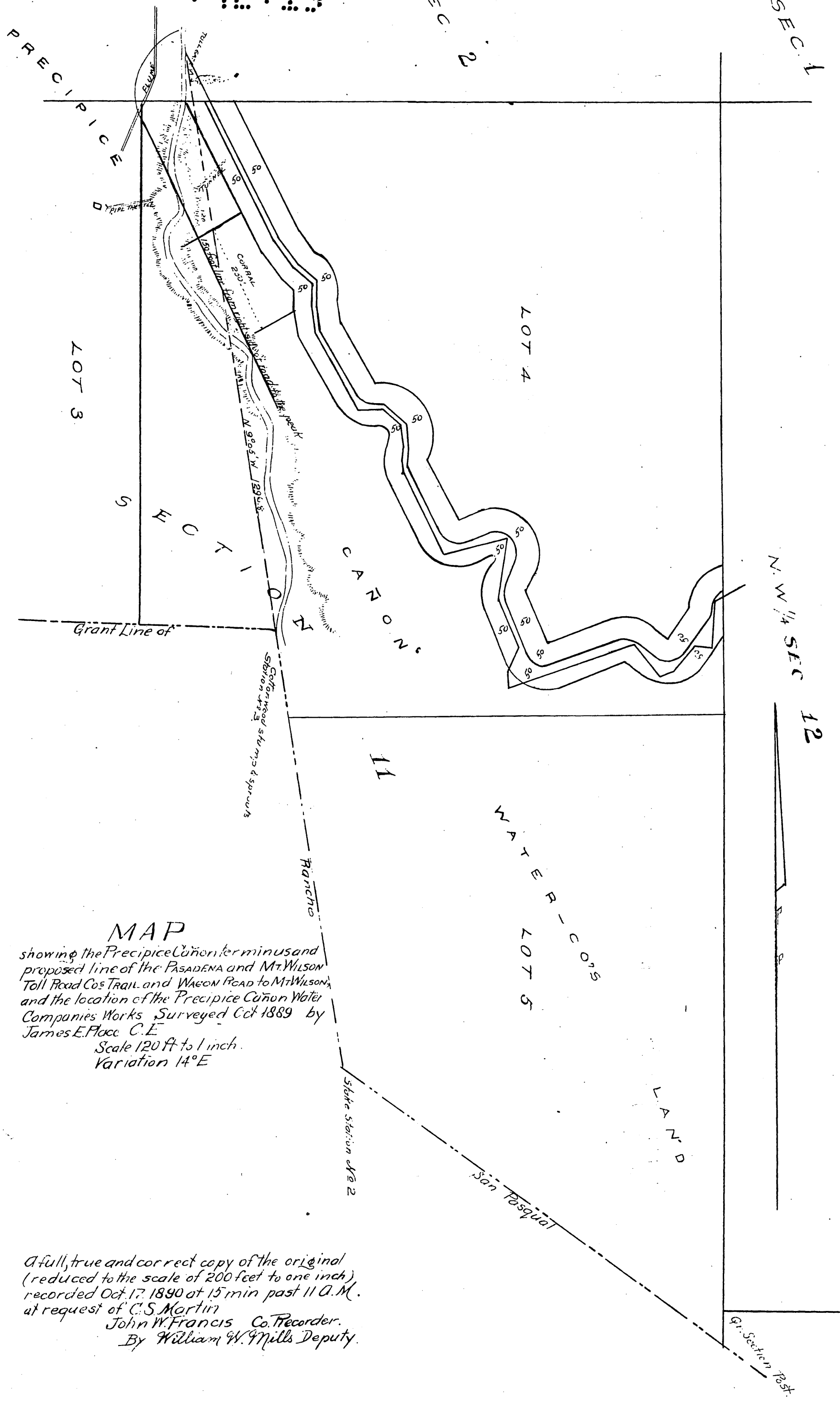


4019

SEC 2

SEC 1



MAP

showing the Precipice Cañon terminus and proposed line of the PASADENA and Mt. WILSON Toll Road COS TRAIL and WAGON ROAD to Mt. WILSON and the location of the Precipice Cañon Water Companies Works Surveyed Oct 1889 by James E. Place C.E.

Scale 120 ft to 1 inch.
Variation 14° E

A full, true and correct copy of the original (reduced to the scale of 200 feet to one inch) recorded Oct. 17, 1890 at 15 min past 11 A.M. at request of C. S. Martin
John W. Francis Co. Recorder.
By William W. Mills Deputy.